



**DUAL INDUCTION
GUARD LOG**

2" = 100'

COMPANY REICHHOLD ENERGY CORPORATION
 ENERGY CORPORATION
 INVESTMENT MANAGEMENT
 WELL INVESTMENT MANAGEMENT 21-20
 FIELD MIST
 COUNTY COLUMBIA STATE OREGON
 LOCATION 4361.4 & 1994.6 E
 OF CORNER
 AVL
 OTHER SERVICES
 DATE 9-21-83
 PERMANENT DATUM KB Elev. 636.6
 LOG MEASURED FROM KB Elev. 611.0
 DRILLING MEASURED FROM KB Elev. 616.6
 DATE 9-21-83
 RUN NO. 01E
 TOOL TYPE AND NO. DIFL 98853
 PAD TYPE
 TOOL POSITION
 OTHER
 DATE 9-21-83
 RUN NO. 01E
 TOOL TYPE AND NO. DIFL 98853
 PAD TYPE
 TOOL POSITION
 OTHER
 DATE 9-21-83
 RUN NO. 01E
 TOOL TYPE AND NO. DIFL 98853
 PAD TYPE
 TOOL POSITION
 OTHER

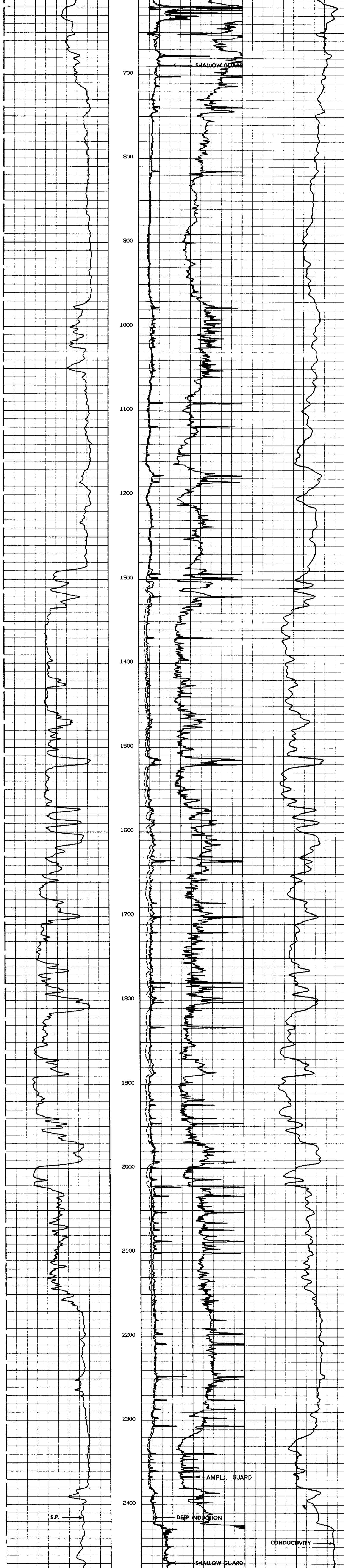
Dens. Visc.		Type Fluid in Hole	
ph Fluid Loss	9.5 - 16.0 ml	LIQND	7.7/8
Source of Sample	CIRCULATED		
R _m @ Meas. Temp.	2.10 @ 63°F		
R _{mc} @ Meas. Temp.	1.60 @ 64°F		
Source R _m	2.40 @ 64°F		
Source R _{mc}	1.80 @ 64°F		
R _m @ BHT	1.30 @ 100°F		
R _{mc} @ BHT	1.02 @ 100°F		
R _m BHT	1.32 @ 100°F		
R _{mc} BHT			

EQUIPMENT DATA	
Run No.	01E
Tool Type and No.	DIFL 98853
Pad Type	
Tool Position	
Other	

SCALE CHANGES	
Scale Up Hole	
Scale Down Hole	

CHANGE IN MUD TYPE OR ADDITIONAL SAMPLES	
Date Sample No.	
Depth—Driller	
Type Fluid in Hole	

RESISTIVITY OHMS M ² /M		CONDUCTIVITY M MHOS/M	
0 SHALLOW GUARD	30	1000 DEEP INDUCTION	0
0 O. S.	300	2000 O. S.	1000
0 AMPLIFIED GUARD	6		



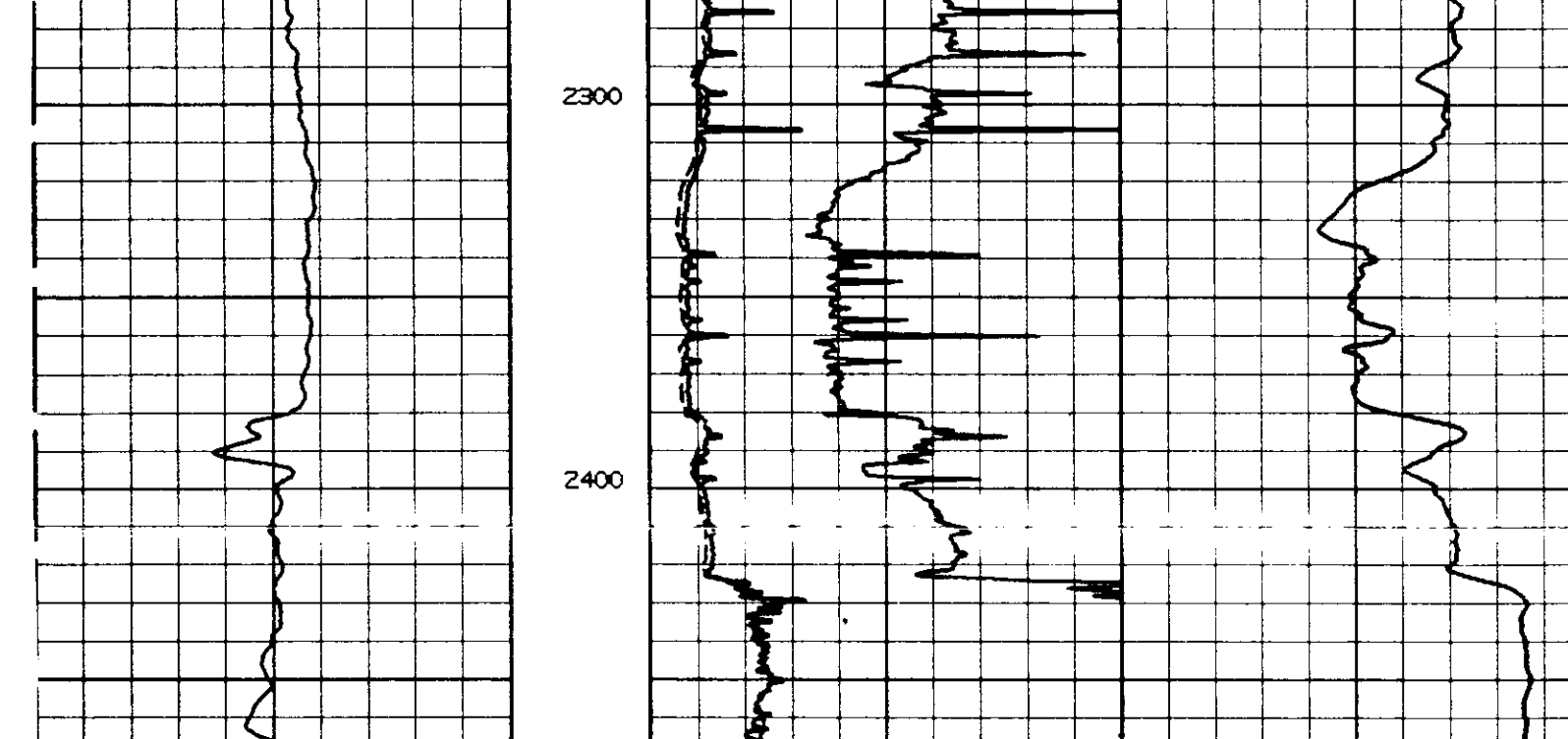
RESISTIVITY OHMS M ² /M		CONDUCTIVITY M MHOS/M	
0 SHALLOW GUARD	30	1000 DEEP INDUCTION	0
0 O. S.	300	2000 O. S.	1000
0 AMPLIFIED GUARD	6		

POTENTIAL MILLIVOLTS	
10	

REICHHOLD ENERGY CORPORATION
 INVESTMENT MANAGEMENT 21-20
 MIST
 COLUMBIA, OREGON

T.D. LOGGED 2493
 T.D. DRILLER 2505
 T.D. WELEX 2499

REPEAT SECTION



Fold Here

Service Ticket No. 1544655 Remarks:

DRAFTED BY - JOHN YAECK

Welex does not guarantee the accuracy of any interpretation of log data, conversion of log data to physical rock parameters, or recommendations which may be given by Welex personnel or which may appear on the log or in any other form. Any user of such data, interpretations, conversions, or recommendations agrees that Welex is not responsible, except where due to gross negligence or willful misconduct, for any loss, damages, or expenses resulting from the use thereof.