

Schlumberger
BOREHOLE COMPENSATED SONIC LOG

COMPANY: AMERICAN GASBAR
 PERSEUS CO.
 WELL: TWEESTMENT INMANEY
 FIELD: CALUMBA STATE CRSE
 COUNTY: CALUMBA
 DATE: SEP 30 1980

LOGGING MEASURED FROM: 4.77
 DATE: 4/25/80
 RECEIVED #110
 DEPTH-DRIER: 4080
 LOGGING MEASURED FROM: 4.77

Run No. 121
 Service Order No. 121
 Fluid Level

BR size of hole: 6.25
 Type of hole: 6.25
 Fluid loss: 46
 Source of sample: CIRCULATION
 Run @ Meas. Temp: 2.02 @ 3.7
 Run @ Meas. Temp: 2.57 @ 3.7
 Run @ Meas. Temp: 1.51 @ 3.7
 Log Log Interval: 1.5
 Logging Started: 1:30
 Logging Stopped: 4:20
 Stop Location: 121
 Stop Location: 121

FOLD HERE

The well name, location and borehole reference data were furnished by the customer.			
EQUIPMENT DATA		LOGGING DATA	
Sonic Panel No.	383	Porosity Selectors	Depth
Sonic Cart No.	1321	Δm Δf Cp	From To
Mem. Panel No.	375		476 4069
G.R. Cart No.	2087		
Caliper No.	456		
TIR No.	380		
Centralizers No.	16NE		
Standoffs No.	1		
Time Const.-Sec.	FIN		
Speed - F.P.M.	50		

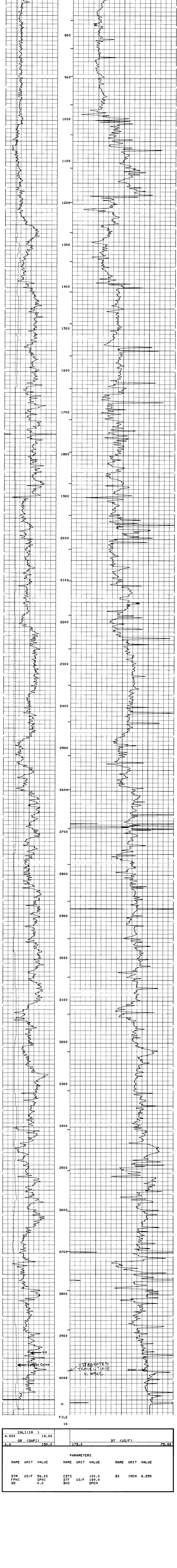
CALIBRATION DATA		REMARKS	
GR	BKG. CPS 43 Source CPS 213 Tc Sec 2.51	* SP MV SHIFT AT 3300	

Velocity (ft/sec) = $\frac{1000.000}{\text{Interval Transit Time (microseconds per foot)}}$

All interpretations are opinions based on inferences from electrical or other measurements and we cannot, and do not guarantee the accuracy or correctness of any interpretations, and we shall not, except in the case of gross or willful negligence on our part, be liable or responsible for any loss, cost, damages or expenses incurred or sustained by anyone resulting from any interpretation made by any of our officers, agents or employees. These interpretations are also subject to our General Terms and Conditions as set out in our current Price Schedule.

PARAMETERS			PARAMETERS			PARAMETERS		
NAME	UNIT	VALUE	NAME	UNIT	VALUE	NAME	UNIT	VALUE
DTM	US/F	56.00	CDTS		100.0	BS	INCH	6.250
FPHI	SPHI	0.0	DTF	US/F	189.0			
DD			BHS		OPEN			

CALI (IN.)		DT (US/F)	
4.000	14.00	175.0	75.00
0.0	GR (GAPI) 150.0		



CALI (IN.)		DT (US/F)	
4.000	14.00	175.0	75.00
0.0	GR (GAPI) 150.0		

PARAMETERS			PARAMETERS			PARAMETERS		
NAME	UNIT	VALUE	NAME	UNIT	VALUE	NAME	UNIT	VALUE
DTM	US/F	56.00	CDTS		100.0	BS	INCH	6.250
FPHI	SPHI	0.0	DTF	US/F	189.0			
DD			BHS		OPEN			