

COMPANY: ENERFIN RESOURCES NORTHWEST

WELL: JOHN HANCOCK 22-27-64

FIELD: MIST GAS

COUNTY: COLUMBIA STATE: OREGON

Schlumberger  
PLATFORM EXPRESS  
ARRAY INDUCTION/SP  
NEUTRON/DENSITY/SONIC

LOG NUMBER: 28-1098  
DATE: 28-OCT-1998  
TIME: 12:31  
WELL: JOHN HANCOCK 22-27-64  
FIELD: MIST GAS  
COUNTY: COLUMBIA  
STATE: OREGON

LOG NUMBER: 28-1098  
DATE: 28-OCT-1998  
TIME: 12:31  
WELL: JOHN HANCOCK 22-27-64  
FIELD: MIST GAS  
COUNTY: COLUMBIA  
STATE: OREGON

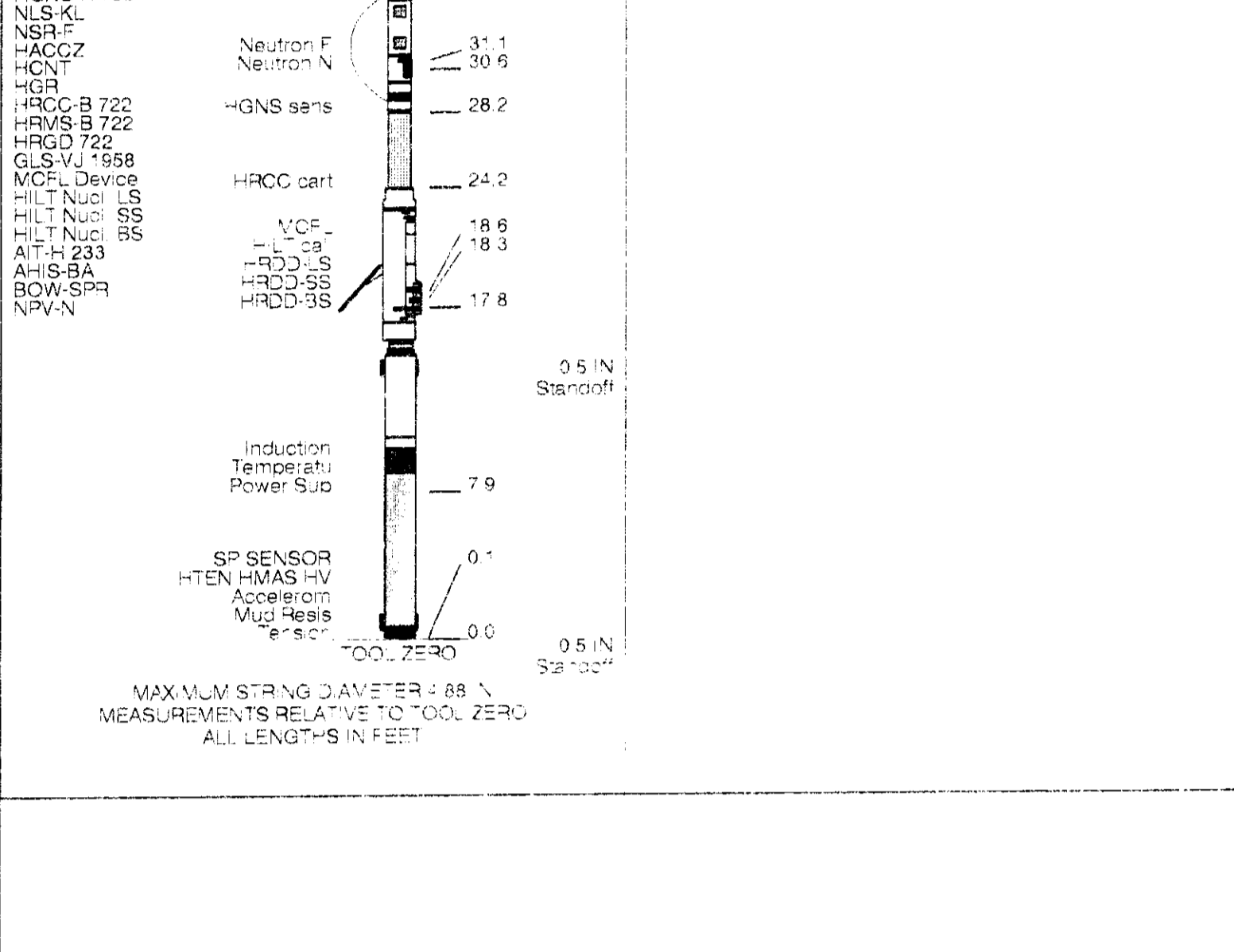
| Run             | Run 1   | Run 2   |
|-----------------|---------|---------|
| Service Order # | 6034683 |         |
| Program Version | RC1-205 |         |
| Service Order # |         | 6034683 |
| Program Version |         | RC1-205 |

OTHER SERVICES1: OS1, OS2, OS3, OS4, OS5  
REMARKS: RUN NUMBER 1

OTHER SERVICES2: OS1, OS2, OS3, OS4, OS5  
REMARKS: RUN NUMBER 2

2 CENTRALIZERS USED ON SONIC.  
0.5 INCH STANDOFFS USED ON ARRAY INDUCTION.

EQUIPMENT DESCRIPTION



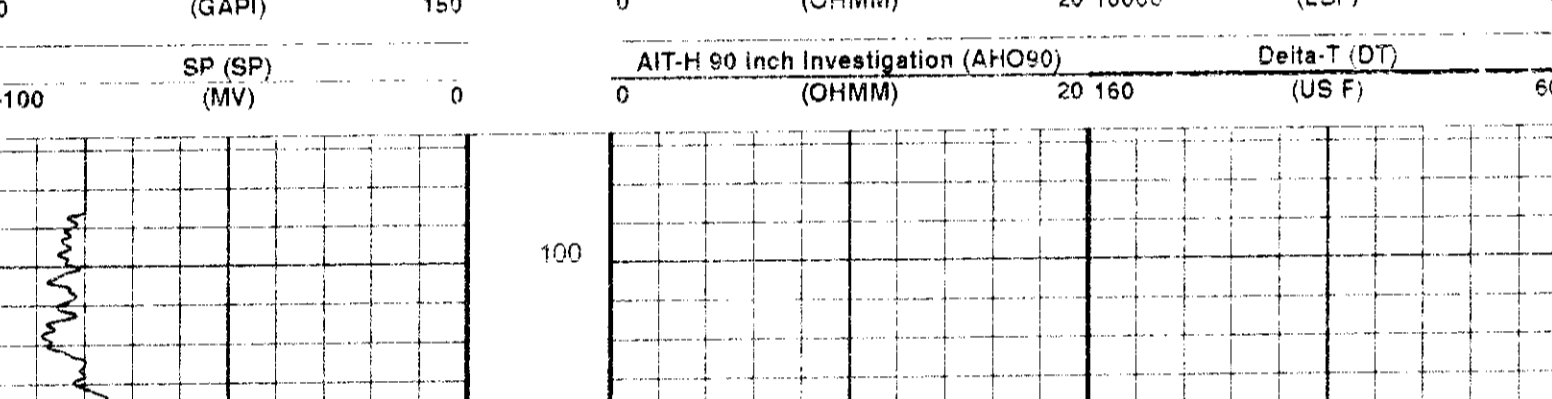
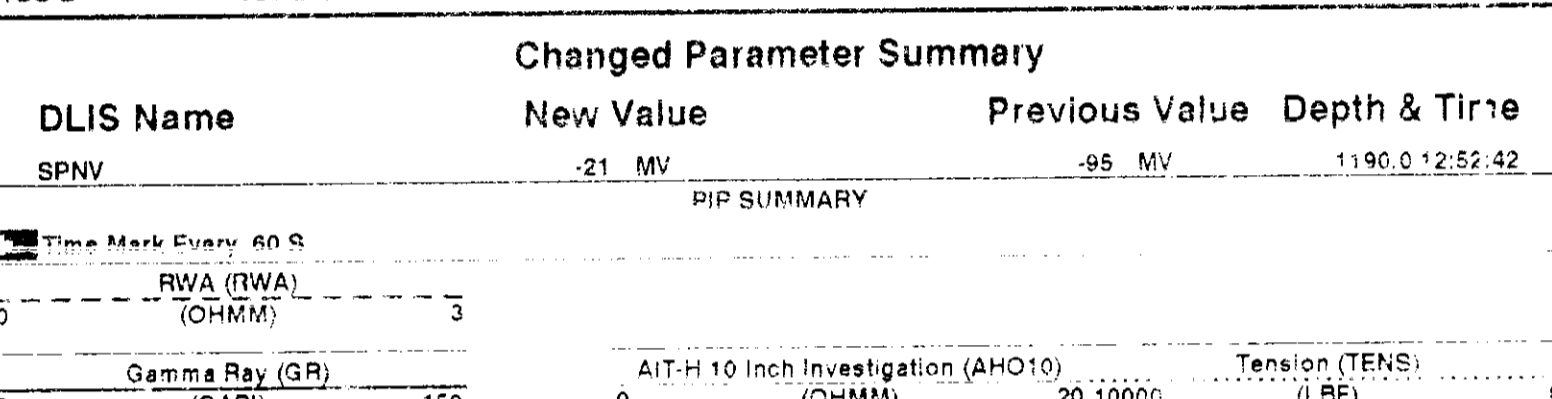
MAXIMUM STRING AVERAGE = 88 N  
MEASUREMENTS RELATIVE TO COLLAR ZERO  
ALL LENGTHS IN FEET

| Input DLIS Files  | Output DLIS Files   |
|---|---|
| DEFAULT HILTB.016 FN:13 FIELD 28-Oct-1998 12:31 2214.0 FT 66.5 FT | DEFAULT HILTB.019 FN:16 FIELD 28-Oct-1998 12:49 2214.0 FT 66.5 FT |

OP System Version: 8C1-205

| DLIS Name | New Value | Previous Value | Depth & Time       |
|-----------|-----------|----------------|--------------------|
| SPNV      | .21       | .05            | MV 1190.0 12:52:32 |

Time Mark Every 60 S



PIP SUMMARY

| DLIS Name | Description                                       | Value                 |
|-----------|---|-----------------------|
| ABHBM     | AIT-H Bhole Correction Mode                       | 2 ComputeStandoff     |
| ABHLM     | AIT-H Basic Log Mode                              | 6 One_Two_and_Four    |
| AHCDE     | AIT-H Casing Detection Enable                     | Yes                   |
| AHCEN     | AIT-H Tool Centering Flag (in Borehole)           | Eccentered            |
| AHCSD     | AIT-H Casing Shoe Estimated Depth                 | -50.00                |
| AHHRF     | AIT-H Mud Resistivity Factor                      | 1                     |
| AHSTA     | AIT-H Tool Standoff                               | 13.0                  |
| ARTS      | Mud Sample Temperature (for ALLRES computation)   | 72.00                 |
| BHT       | Bottom Hole Temperature (used in calculations)    | 75.2                  |
| BS        | Bit Size  | 6.250                 |
| CRSE      | Drilling Fluid Density                            | 8.44                  |
| DO        | Depth Offset                                      | 0.0                   |
| DTCM      | Delta-T Computation Mode                          | FULL                  |
| FEK       | Form Factor Exponent                              | 2                     |
| FNUM      | Form Factor Numerator                             | 1                     |
| FPHI      | Form Factor Porosity Source                       | HCAL                  |
| GCSE      | Generalized Celer Section                         | 0.01                  |
| GDEV      | Average Angular Deviation of Borehole from Normal | 0                     |
| GGRD      | Geothermal Gradient                               | DEG DF                |
| GRSE      | Generalized Mud Resistivity Selection             | AITH RESIST           |
| GTSE      | Generalized Temperature Selection                 | LINEAR ESTIMATE       |
| HSCM      | HILT Speed Correction Mode                        | TSCD SPEED CORRECTION |
| HSTI      | HILT Use HILT Acceleration                        | YES                   |
| NIUDE     | Conic Filtration Mode                             | NO                    |
| MST       | Mud Sample Temperature                            | 72.00                 |
| PP        | Mud Sample Playback Processing                    | NORMAL                |
| RFMS      | Resistivity of Mud Filtrate Sample                | 4.0700                |
| RTCO      | RTCO - RI Inversion Correction                    | YES                   |
| RW        | Resistivity of Connate Water                      | 1.0000                |
| SHT       | Surface Hole Temperature                          | 88                    |
| SPNV      | SP Neat Value                                     | 0.21                  |
| TD        | Total Depth                                       | 2211                  |
| TWS       | Temperature of Connate Water Sample               | 100.00                |

Format: AIT\_SON\_1 Vertical Scale: 2" per 100 Graphics File Created: 28-Oct-1998 12:49

OP System Version: 8C1-205

| DLIS Name | New Value | Previous Value | Depth & Time |
|-----------|-----------|----------------|--------------|
| HILTB-DTB | 8C1-205   |                |              |
| TCC-B     | 8C1-205   |                |              |

| Input DLIS Files  | Output DLIS Files   |
|---|---|
| DEFAULT HILTB.016 FN:13 FIELD 28-Oct-1998 12:31 2214.0 FT 66.5 FT | DEFAULT HILTB.019 FN:16 FIELD 28-Oct-1998 12:49 2214.0 FT 66.5 FT |

COMPANY: ENERFIN RESOURCES NORTHWEST

WELL: JOHN HANCOCK 22-27-64

FIELD: MIST GAS

COUNTY: COLUMBIA STATE: OREGON

Schlumberger

PLATFORM EXPRESS  
ARRAY INDUCTION/SP  
NEUTRON/DENSITY/SONIC

|                     |           |
|---------------------|-----------|
| BOTTOM LOG INTERVAL | 1103'     |
| SCHLUMBERGER DEPTH  | 2309'     |
| DEPTH COLLAR        | 2214'     |
| WELL BUSHING        | 6.250" ID |
| DRILL FLOOR         | 2211'     |
| SRCLND LEVEL        | 88' ST    |