

2" - 100'

DUAL INDUCTION GUARD LOG

COMPANY: OREGON NATURAL GAS CORPORATION
 OREGON NATURAL GAS CORPORATION
 625 OREGON ST., S.W.
 PORTLAND, OREGON 97205
 WELL NO.: 33-33-88
 DR.: H. HOWARD JOHNSON
 FIELD: OLNEY GAS
 COUNTY: CLATSOP
 LOCATION: CLATSOP NORTH & 2000' WEST FROM THE SOUTHWEST CORNER OF #1 C/AVL STATE (OR) 50M

DATE: 09/08/88
 TIME: 10:45 AM
 DEPTH: 236
 TEMPERATURE: 11.2 @ 81
 S.W. LOG NO.: 236
 S.W. LOG DATE: 08/05/88
 S.W. LOG TIME: 08:05
 S.W. LOG TEMP.: 5.5 @ 50
 S.W. LOG PRESS.: 107.4 @ 10.8 @ 30 @ 50 @ 101.6 @

Payment Debit: K 500
 Drilling Measurement from K 1.3
 Dip: 2.37
 Dip Azimuth from N: 11.2 @ 81
 ELEV: 500
 FWH: K B 521
 DEPTH: 236
 S.W. LOG DATE: 08/05/88
 S.W. LOG TIME: 08:05
 S.W. LOG TEMP.: 5.5 @ 50
 S.W. LOG PRESS.: 107.4 @ 10.8 @ 30 @ 50 @ 101.6 @

Flow Rate: 10.0
 Particulate Loss: 10.5
 Surface of Damage: 1.0
 F @ Meas Temp: 0.21 @ 50 F 1.00 @ 81 F
 F @ Meas Temp: 0.21 @ 50 F 1.00 @ 81 F
 F @ Meas Temp: 0.21 @ 50 F 1.00 @ 81 F
 F @ Meas Temp: 0.21 @ 50 F 1.00 @ 81 F
 F @ Meas Temp: 0.21 @ 50 F 1.00 @ 81 F

Flow Rate: 10.0
 Particulate Loss: 10.5
 Surface of Damage: 1.0
 F @ Meas Temp: 0.21 @ 50 F 1.00 @ 81 F
 F @ Meas Temp: 0.21 @ 50 F 1.00 @ 81 F
 F @ Meas Temp: 0.21 @ 50 F 1.00 @ 81 F
 F @ Meas Temp: 0.21 @ 50 F 1.00 @ 81 F
 F @ Meas Temp: 0.21 @ 50 F 1.00 @ 81 F

Flow Rate: 10.0
 Particulate Loss: 10.5
 Surface of Damage: 1.0
 F @ Meas Temp: 0.21 @ 50 F 1.00 @ 81 F
 F @ Meas Temp: 0.21 @ 50 F 1.00 @ 81 F
 F @ Meas Temp: 0.21 @ 50 F 1.00 @ 81 F
 F @ Meas Temp: 0.21 @ 50 F 1.00 @ 81 F
 F @ Meas Temp: 0.21 @ 50 F 1.00 @ 81 F

Service Ticket No. 054969 Remarks

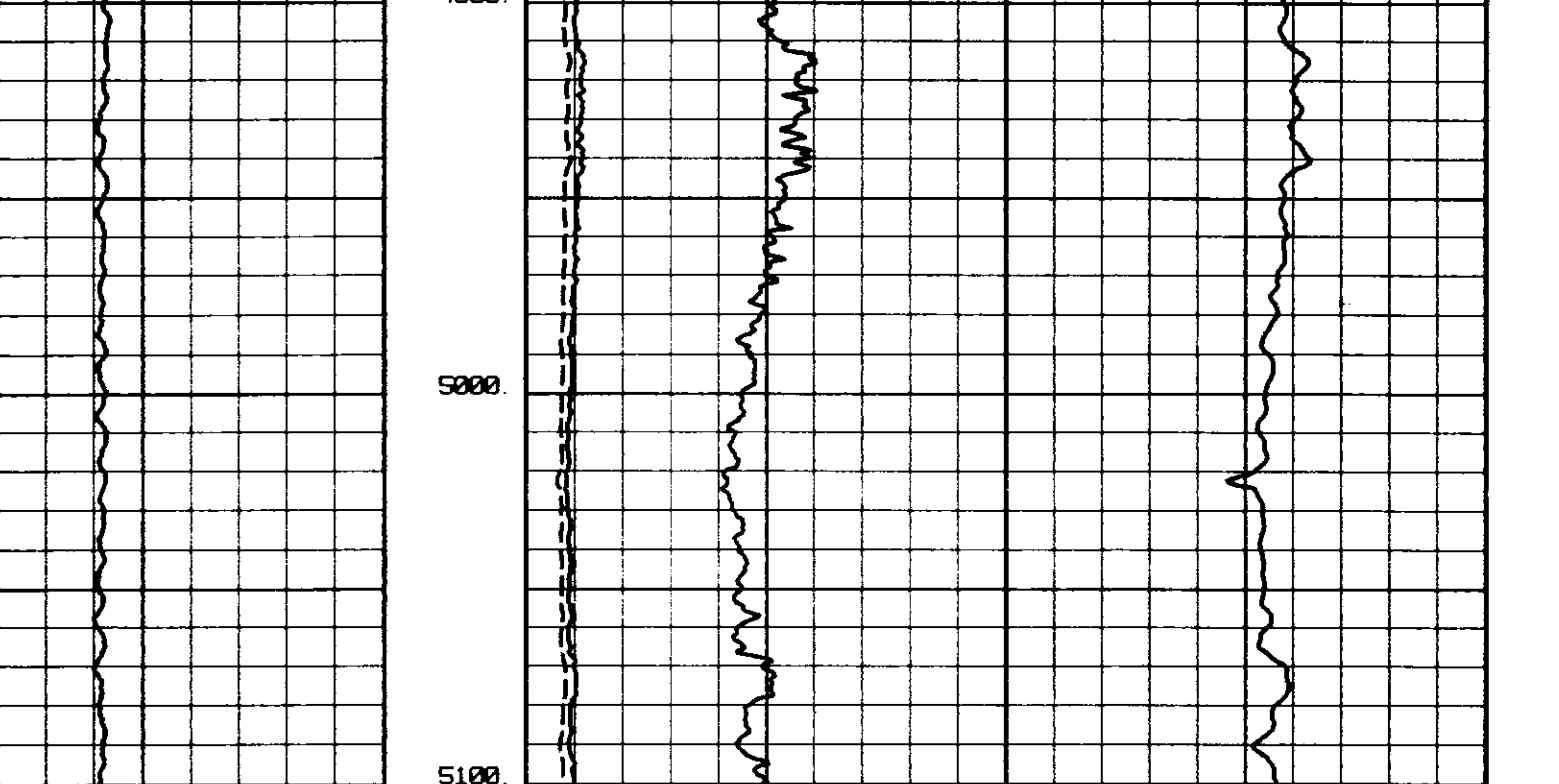
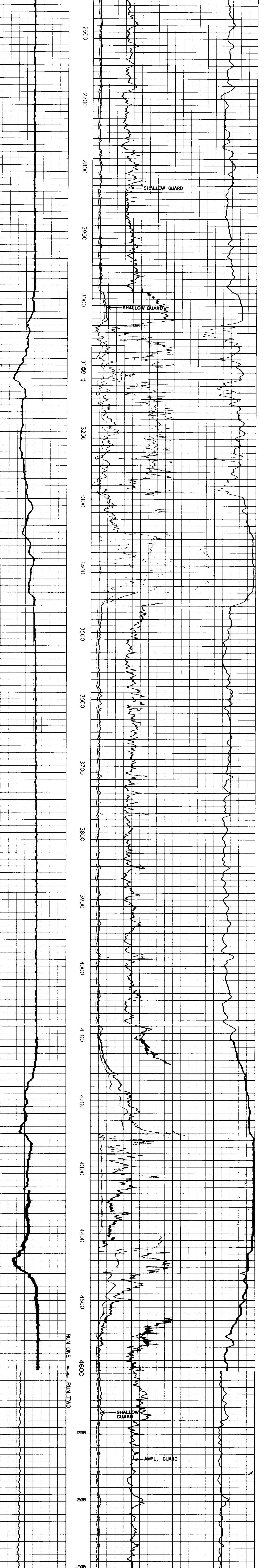
Change in Mud Type or Additional Samples
 Date Sample No. Type Log
 Type Fluid in Hole

SCALE CHANGES
 Scale Up Hole
 Scale Down Hole

EQUIPMENT DATA
 Tool Type and No.
 Pad Type
 Test Position
 Other

WELLS does not guarantee the accuracy of any interpretation of log data, conversion of log data to physical rock parameters, or recommendations which may be given by WELLS personnel. WELLS shall not be held responsible for any loss of well, damage to well, or other loss of any kind, direct or indirect, arising from the use of such data, interpretations, conversions, or recommendations except where due to gross negligence or willful misconduct. For any loss, damage, or expense resulting from the use thereof!

2" - 100'



OREGON NATURAL GAS CORPORATION
 HOWARD JOHNSON 33-33-33
 OLNEY GAS
 CLATSOP COUNTY, OREGON

T.D. LOGGED 6516
 T.D. DRILLER 1000
 T.D. WELLEX 6525
 ELEV: KB 521 6L 500

