

Schlumberger
DUAL INDUCTION - SFL
BHC SONIC
LINEAR CORRELATION LOG

COMPANY: NAHAMA AND WEAGANT ENERGY CO.
 WELL: 'GRUB CREEK JOHNSTON' #11-30-65 R.D.1
 FIELD: MIST
 COUNTY: COLUMBIA
 STATE: OREGON
 LOCATION: 827 S & 890 DE
 WELL: FROM NW CORNER OF
 COMPANY: NAHAMA AND WEAGANT ENERGY CO.
 COUNTY: COLUMBIA
 STATE: OREGON
 OTHER SERVICES: (L) (S) (R) (A) (T)

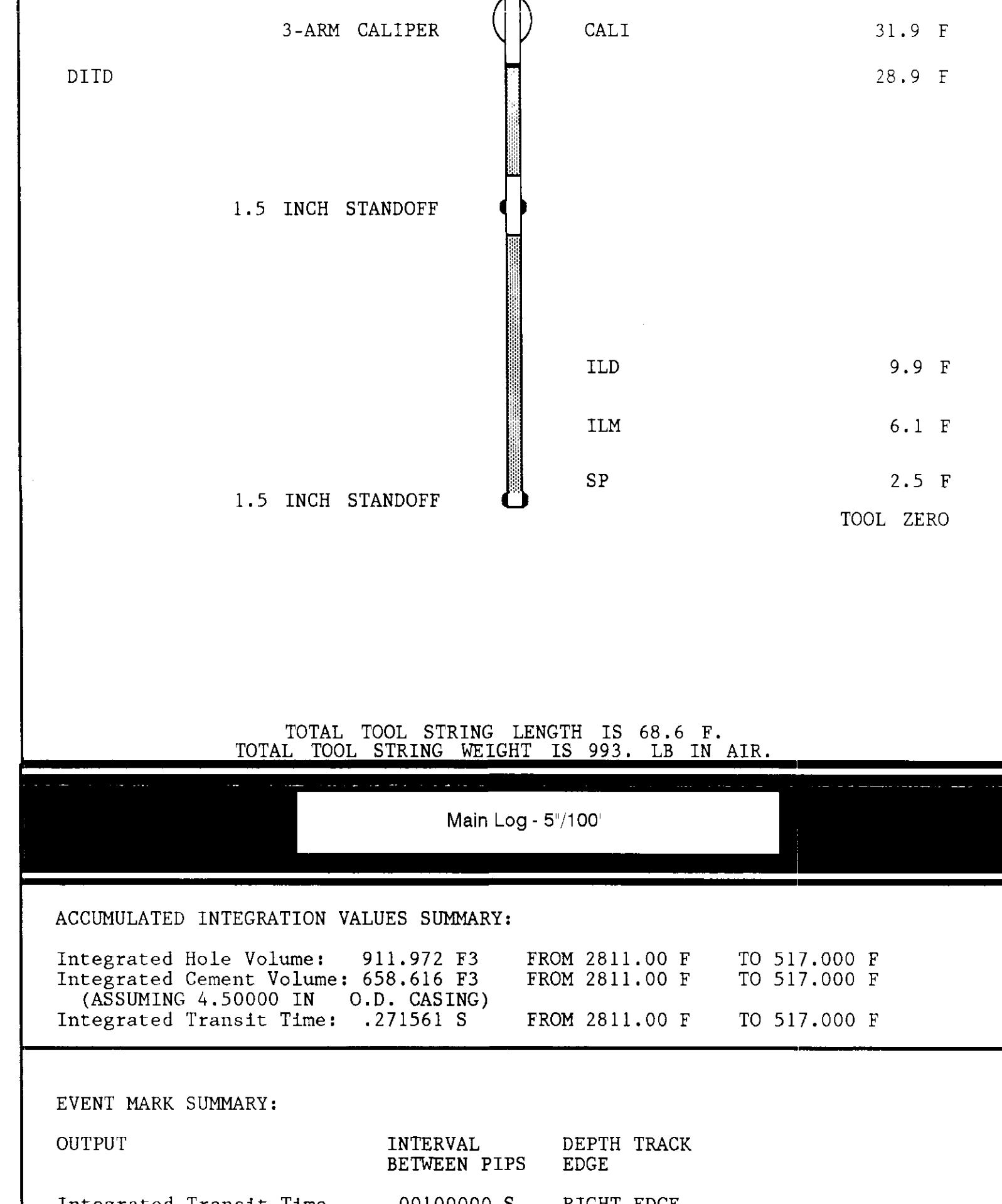
The well name, location and borehole reference data were furnished by the customer

All interpretations are opinions based on inferences from electrical or other measurements and we cannot and do not guarantee the accuracy or correctness of any measurements and we shall not be held responsible for any loss of life, property or equipment or any other damage sustained by anyone arising from any measurements made by any of our officers, agents, employees or representatives. These interpretations are also subject to Cause 4 of our General Terms and Conditions as set forth in our contract schedule.

Run No.	TWO
Service Order No.	824385
Drilling Fluid Level	5 CF
Salinity	800.0 PPM
Rmf @ BHT	1.387 O-HMM @ 90.0 DEG F
Rmf @ MHT	1.305 O-HMM @ 90.0 DEG F
Logging Speed	3600.0 F/HR
EQUIPMENT DATA	
Tool Number 1	DS-EC 1342
Tool Number 2	DC-DA 1386
Tool Number 3	MCD-D 1237
Tool Number 4	SLS-MA 114
Tool Number 5	SLS-WA 1464
Tool Number 6	SGC-JC 4148
Tool Number 7	HEM-BD 1349
Tool Number 8	SLM-DA 428
Tool Number 9	NLM-SC 207
Tool Number 10	
Tool Number 11	
Tool Number 12	

REMARKS: 15' STANDOFFS RUN ON INDUCTION TOOL
 CMEZ CENTRALIZERS RUN ON SONIC TOOL
 THANK YOU FOR CHOOSING SCHLUMBERGER
 ORIGINAL HOLE SIDETRACKED AT 570'

LOGGING TOOL STRING SKETCH



TOTAL TOOL STRING LENGTH IS 68.6 F.
 TOTAL TOOL STRING WEIGHT IS 993. LB IN AIR.

Main Log - 5"/100

ACCUMULATED INTEGRATION VALUES SUMMARY:

Integrated Hole Volume:	911.972 F3	FROM 2811.00 F	TO 517.000 F
Integrated Cement Volume:	658.616 P3	FROM 2811.00 F	TO 517.000 F
(ASSUMING 4.50000 IN O.D. CASING)			
Integrated Transit Time:	.271561 S	FROM 2811.00 F	TO 517.000 F

EVENT MARK SUMMARY:

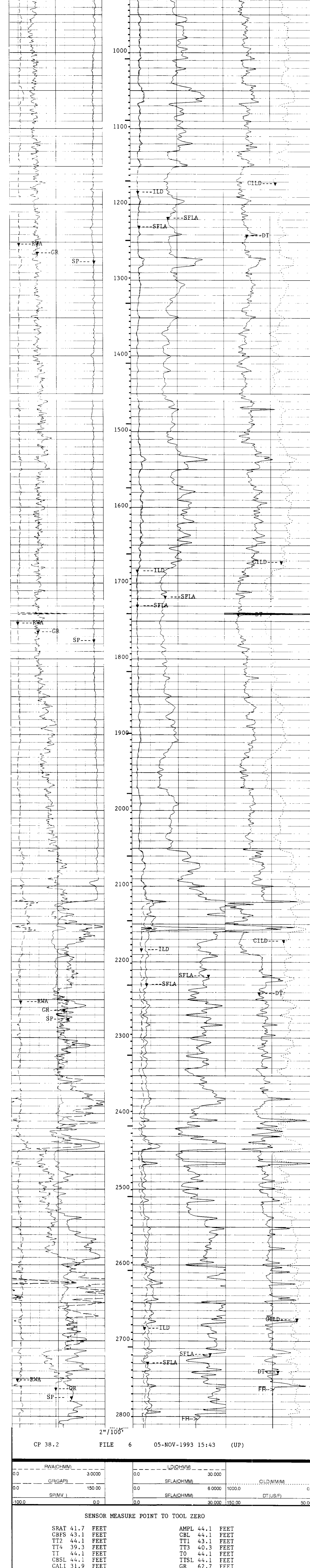
OUTPUT	INTERVAL BETWEEN PIPS	DEPTH TRACK EDGE
Integrated Transit Time	.00100000 S	RIGHT EDGE

0.0	FWA(OHMM)	3.0000
0.0	GR(GAPI)	150.00
100.0	SP(MV)	0.0

0.0	ILD(OHMM)	30.000
0.0	SFLA(OHMM)	6.0000 1000.0
0.0	SFLA(OHMM)	30.000 150.00

0.0	CLD(MMM)	0.0
0.0	DT(US/F)	50.000

CP 38.2 FILE 6 05-NOV-1993 16:19 (UP)



CP 38.2 FILE 6 05-NOV-1993 15:43 (UP)

0.0	FWA(OHMM)	3.0000
0.0	GR(GAPI)	150.00
-100.0	SP(MV)	0.0

0.0	ILD(OHMM)	30.000
0.0	SFLA(OHMM)	6.0000 1000.0
0.0	SFLA(OHMM)	30.000 150.00

0.0	CLD(MMM)	0.0
0.0	DT(US/F)	50.000

SENSOR MEASURE POINT TO TOOL ZERO

SRAT 41.7 FEET	AMPL 44.1 FEET
CBTS 43.1 FEET	CBI 44.1 FEET
TT2 44.1 FEET	TT1 43.1 FEET
TT4 39.3 FEET	TT3 40.3 FEET
TI 44.1 FEET	TO 44.1 FEET
CBSL 44.1 FEET	ITSL 44.1 FEET
CALI 31.9 FEET	GR 62.7 FEET
DTM 6.1 FEET	ILD 9.9 FEET
SP 2.5 FEET	SFL 6.8 FEET
TENS 2.5 FEET	SPAR 2.5 FEET
NOIS 2.5 FEET	

PARAMETERS

PARAMETER	VALUE	UNIT
SMB - Sonic Memory Board	DINA	
VDLR - Defn not Found	21N	
TOCA - TO Correction Status	DISA	
RATE - Firing Rate	15	HZ
DG - Downhole Gain	1/5	
DETE - Detection	E2	
NMSG - Near Minimum Sliding Gate	180	DE
CBLG - CBL Gate Width	35	US
AMPL - Sonic Amplitude	UT	
CBL - Cement Bond Log Amplitude	1	
WFM - Waveform Mode	FAST	
SS - Sweep Speed	1	
TOD - TO Delay	189.000	US/F
DTF - Delta-T Fluid	56.0000	US/F
DTM - Delta-T Matrix	10.0000	
CDTS - Correction for Delta-T Shale, Empirical	100.000	
SPFS - Sonic Porosity Formula Select	R-H	
WMUD - Weight of Mud	10.1000	LB/G
MSEC - Medium Sonde Error Correction	8.00000	MM/M
SRB - Shoulder Bed Resistivity	1.00000	OHMM
DSEC - Deep Sonde Error Correction	6.70000	MM/M
FCD - Future Casing Diameter	4.50000	IN
NCJT - NGT Calibration Jig Type	GSRV	
PFPH - Formation Factor Formula Porosity	SPHI	
DWCO - Digitizer Word Count	512	
DSCA - Digitizer Sample Interval	5	
DDIN - Digitizing Delay	200	US
BHS - Bit Size	7.87500	IN
BHS - Borehole Status (Open or Cased)	OPEN	

COMPANY: NAHAMA AND WEAGANT ENERGY CO. SCHL FR 2806.0 F
 WELL: 'GRUB CREEK JOHNSTON' #11-30-65 R.D.1 SCHL TD 2812.0 F
 FIELD: MIST Elev: KB 643.7 F
 COUNTY: COLUMBIA STATE: OREGON DF 642.7 F
 GL 633.7 F



DUAL INDUCTION - SFL
BHC SONIC
LINEAR CORRELATION LOG