



DUAL INDUCTION - SFL BHC SONIC LINEAR CORRELATION LOG

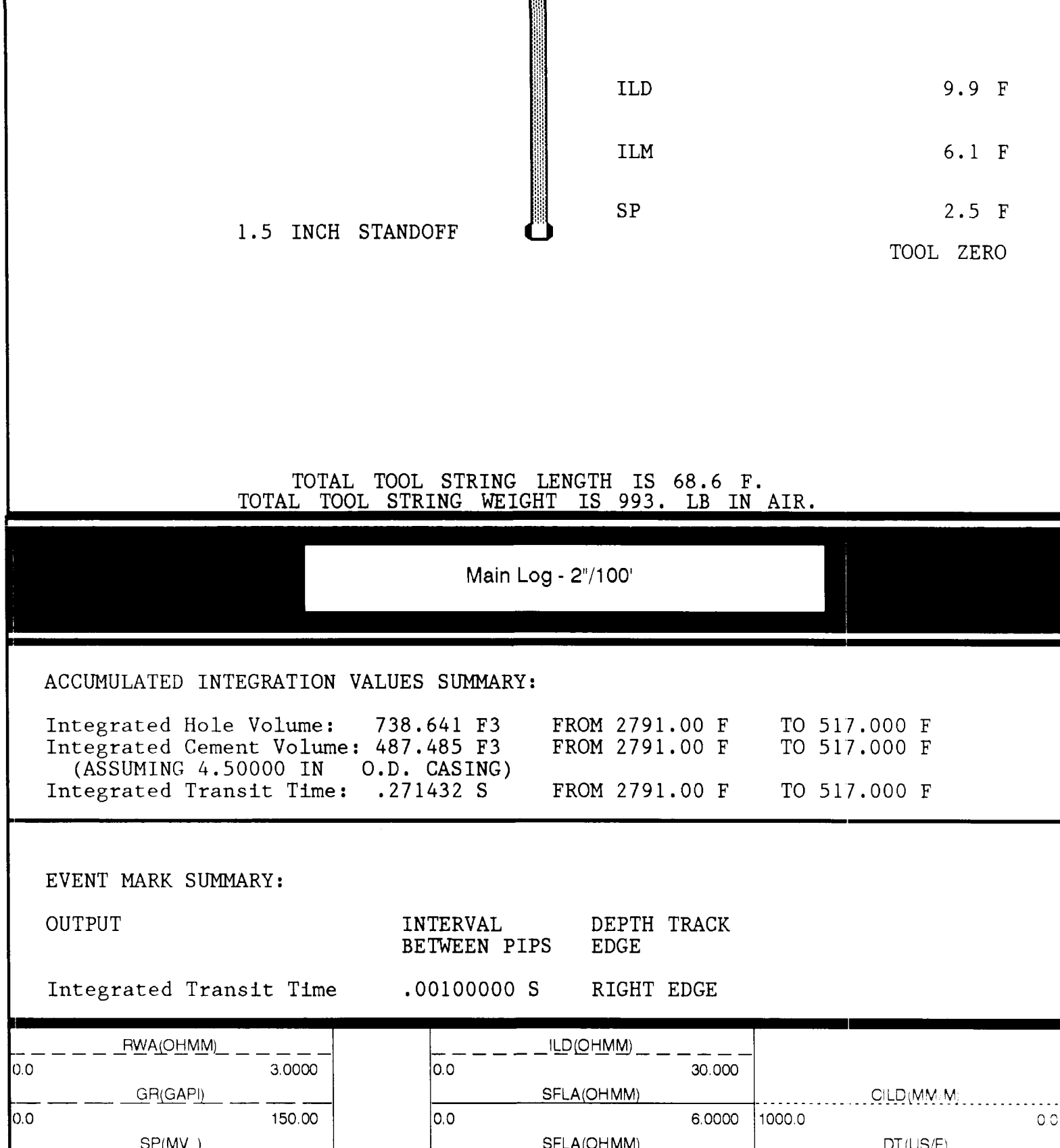
COMPANY NAHAMA AND WEAGANT ENERGY CO.
WELL 'GRUB CREEK JOHNSTON' #11-30-65
FIELD MIST
COUNTY COLUMBIA STATE OREGON
LOCATION 962.75 S & 696.6 E
FROM W/4 CORNER OF SECT. 4, T5S R.10E S.30 E. 633.7 F.
AP SURV. NO. 96-009-00317 TWP. 5N RANGE
COUNTY COLUMBIA STATE OREGON
D.L. 643.7 F
D.L. 633.7 F
Log Measure From M
Dilling Measure From M
Log Measure From M
Dilling Measure From M

The well name, location and borehole reference data were furnished by the customer.
A: Measurements are to be taken based on reference to other measurements and we cannot be held responsible for any errors or omissions. We warrant only the accuracy of the data presented. The use of this data for any purpose other than that intended by Schlumberger is at the user's risk. Schlumberger will not be held responsible for any costs, damages or expenses incurred or sustained by anyone resulting from any operations made by any of our officers, agents or employees. These interpretations are also subject to Clause 4 of our General Terms and Conditions as set out in our current Price Schedule.

Run No.	ONE
Service Order No.	624384
Drilling Fluid Level	5.0 F
Salinity	650 PPM
Rmt @ BHT	1.862 OHMM @ 107 DEG F
Rmc @ BHT	1.188 OHMM @ 107 DEG F
Logging Speed	3800.0 F/HR

EQUIPMENT DATA	
Tool Number 1	DIS-EC 1342
Tool Number 2	DIC-DA 1386
Tool Number 3	MCD-D 1237
Tool Number 4	SLS-MA 114
Tool Number 5	SLS-WA 1464
Tool Number 6	SGG-JC 4148
Tool Number 7	SEM-BD 1349
Tool Number 8	SLM-DA 428
Tool Number 9	NLM-BC 207
Tool Number 10	
Tool Number 11	
Tool Number 12	

REMARKS:
1.5" STANDOFFS RUN ON INDUCTION TOOL
CMEZ CENTRALIZERS RUN ON SONIC TOOL
THANK YOU FOR CHOOSING SCHLUMBERGER



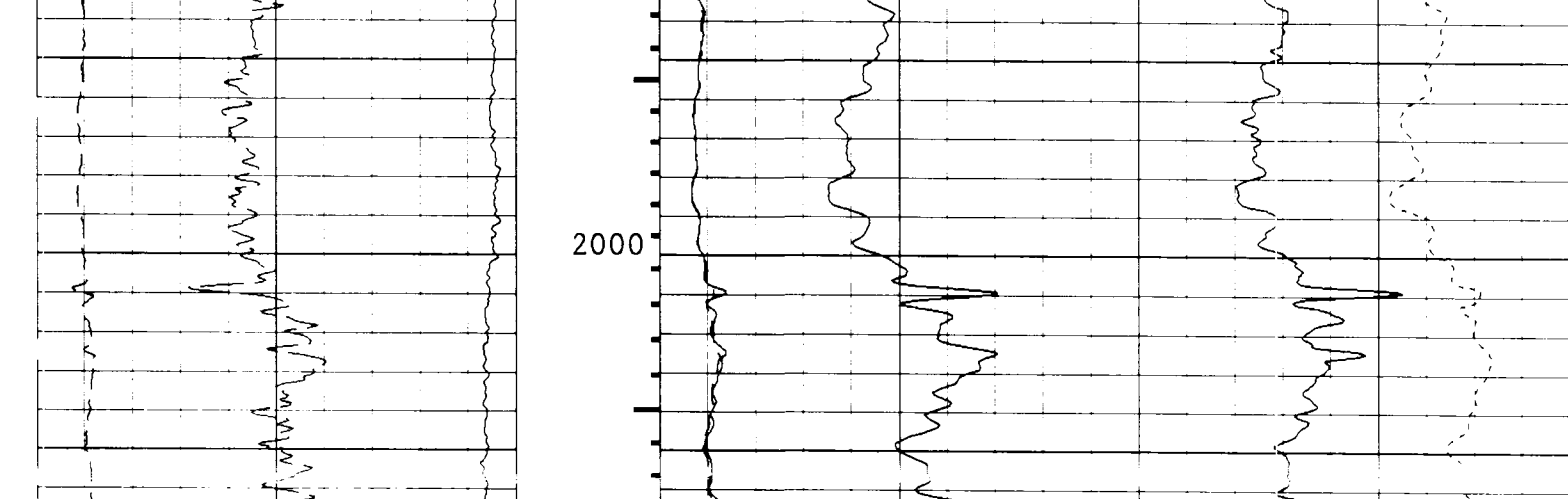
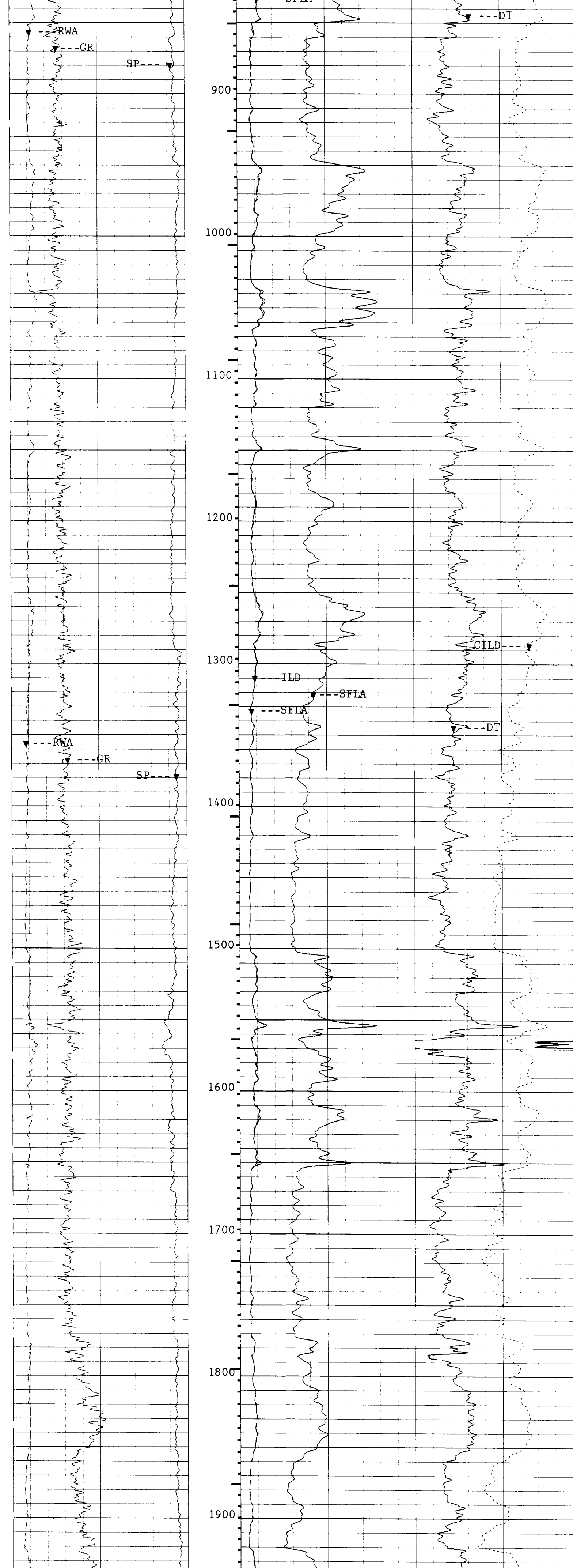
TOTAL TOOL STRING LENGTH IS 68.6 F.
TOTAL TOOL STRING WEIGHT IS 993. LB IN AIR.

Main Log - 2"/100'

ACCUMULATED INTEGRATION VALUES SUMMARY:			
Integrated Hole Volume:	738.641 F3	FROM 2791.00 F	TO 517.000 F
Integrated Cement Volume:	487.485 F3	FROM 2791.00 F	TO 517.000 F
(ASSUMING 4.50000 IN O.D. CASING)			
Integrated Transit Time:	.271432 S	FROM 2791.00 F	TO 517.000 F

EVENT MARK SUMMARY:		
OUTPUT	INTERVAL BETWEEN PIPS	DEPTH TRACK EDGE
Integrated Transit Time	.00100000 S	RIGHT EDGE

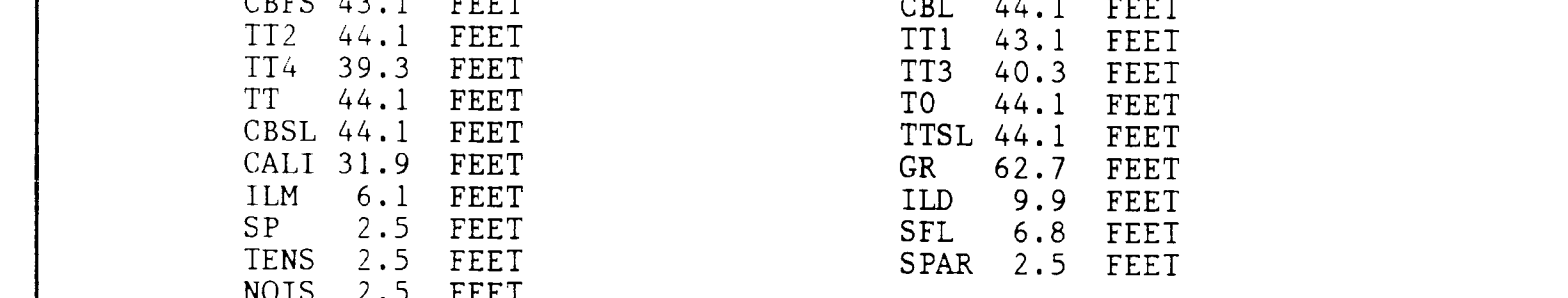
0.0 --- FWA(OHMM) --- 3.0000	0.0 --- ILD(OHMM) --- 30.000
0.0 --- GR(GAPI) --- 150.00	0.0 --- SFLA(OHMM) --- 6.0000
0.0 --- SP(MV) --- 0.0	0.0 --- SFLA(OHMM) --- 6.0000
	0.0 --- DT(US/F) --- 50.000



SENSOR MEASURE POINT TO TOOL ZERO	
SRAT 41.7 FEET	AMPL 44.1 FEET
CBFS 43.1 FEET	CBL 44.1 FEET
TI1 44.1 FEET	TI1 43.1 FEET
TI4 39.3 FEET	TI3 40.3 FEET
TI 44.1 FEET	TO 44.1 FEET
CBSL 44.1 FEET	TTSL 44.1 FEET
CALI 31.9 FEET	GR 62.7 FEET
ILM 6.1 FEET	ILD 9.9 FEET
SP 2.5 FEET	SEL 6.8 FEET
TENS 2.5 FEET	SPAR 2.5 FEET
NOIS 2.5 FEET	

PARAMETERS					
NAME	VALUE	UNIT	NAME	VALUE	UNIT
SMB	DISA		VDLR	21N	
DC	DISA		RATE	15	HZ
NMSC	180	US	DETE	E2	
AMPL	2		CBIG	35	US
WFM	DISA		CBL	UT	
TOD	DISA		SS	FAST	
DTM	56.0000	US/F	DTF	189.000	US/F
SPFS	R-H		CDTS	300.000	FF
DO	0.0	F	NORM	FF	
MSEC	8.00000	MM/M	WNUD	9.90000	LB/G
DSEC	6.70000	MM/M	FRM	1.00000	OHMM
NCJT	GSRY		FCD	4.50000	IN
DWCO	512		ILD	9.9	
DDEL	200		FFHI	SPhi	
			DSIN	5	US
			BS	7.87500	IN
BHS	OPEN				

COMPANY NAHAMA AND WEAGANT ENERGY CO. SCHL FR 2785.0 F
WELL 'GRUB CREEK JOHNSTON' #11-30-65 DRLR TD 2791.0 F
FIELD MIST Elev: KB 643.7 F
COUNTY COLUMBIA STATE OREGON DF 643.7 F
GL 633.7 F



DUAL INDUCTION - SFL BHC SONIC LINEAR CORRELATION LOG