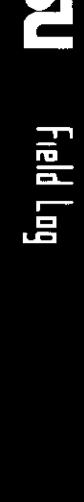


Schlumberger



2" DUAL INDUCTION

COMPANY: DAWSON PETROLEUM CO., INC.

WELL: LONGVIEW FIBRE #1

FIELD: WHALE COVE

COUNTY: LINCOLN

STATE: OREGON

LOCATION: NE 1/4

SEC: 20

TWP: 9S

RGE: 11M

PERMANENT DATUM: GL

ELEV. OF PERM. DATUM: 250.0 F

LOG MEASURED FROM: KB

4.5 F ABOVE PERM. DATUM

DRLG. MEASURED FROM: KB

DATE: 13 NOV 84

RUN NO: 1

DEPTH-DRILLER: 1885.0 F

DEPTH-LOGGER: 1882.0 F

BTM, LOG INTERVAL: 1886.0 F

TOP LOG INTERVAL: 432.0 F

CASING-DRILLER: 408 F

CASING-LOGGER: 432 F

CASING: 8 5/8"

BIT SIZE: 6 1/2"

DEPTH: 1885 F

OTHER SERVICES-

PROGRAM

TAPE NO:

26.2

SERVICE

ORDER NO:

432294

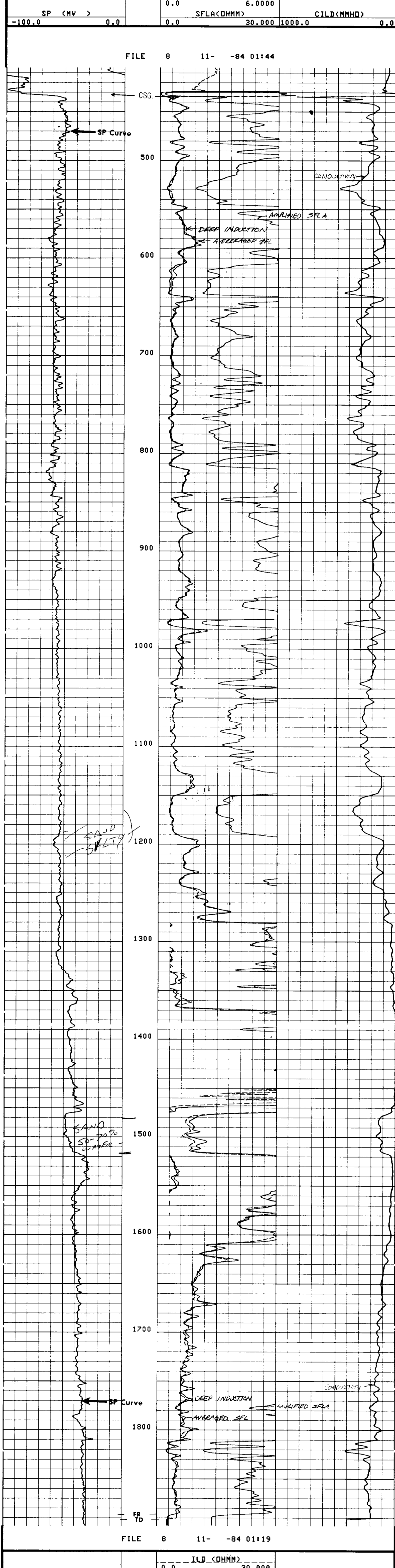
TYPE FLUID IN HOLE: GEL MUD
 DENSITY: 9.5 LB/G
 VISCOSITY: 38.0 S
 PH: 10.0
 FLUID LOSS:
 SOURCE OF SAMPLE: FLOWLINE
 RM: 1.240 DHMM AT 65.0 DEGF
 RMF: 1.600 DHMM AT 60.0 DEGF
 RMC: 1.930 DHMM AT 61.0 DEGF
 SOURCE RMF/RMC: MEAS/MEAS
 RM AT BHT: 1.075 DHMM AT 76.0 DEGF
 RMF AT BHT: 1.291 DHMM AT 76.0 DEGF
 RMC AT BHT: 1.581 DHMM AT 76.0 DEGF
 TIME CIRC. STOPPED: 15:00 11-12
 TIME LOGGER ON BTM.: 00:54 11-13
 MAX. REC. TEMP: 76.0 DEGF
 LOGGING UNIT NO: 8128
 LOGGING UNIT LOC: SACRAMENTO
 RECORDED BY: SUTER
 WITNESSED BY: NEWTON/MONTGOMERY

REMARKS:

EQUIPMENT NUMBERS-

DIS 567 DIC 552 IEM 232

ALL INTERPRETATIONS ARE OPINIONS BASED ON INFERENCES FROM ELECTRICAL OR OTHER MEASUREMENTS AND WE CANNOT, AND DO NOT GUARANTEE THE ACCURACY OR CORRECTNESS OF ANY INTERPRETATIONS, AND WE SHALL NOT, EXCEPT IN THE CASE OF GROSS OR WILLFUL NEGLIGENCE ON OUR PART, BE LIABLE OR RESPONSIBLE FOR ANY LOSS, COSTS, DAMAGES OR EXPENSES INCURRED OR SUSTAINED BY ANYONE RESULTING FROM ANY INTERPRETATION MADE BY ANY OF OUR OFFICERS, AGENTS OR EMPLOYEES. THESE INTERPRETATIONS ARE ALSO SUBJECT TO OUR GENERAL TERMS AND CONDITIONS AS SET OUT IN OUR CURRENT PRICE SCHEDULE.



SENSOR MEASURE POINT TO TOOL ZERO

SFL	6.4 FEET	ILD	9.4 FEET
SP	2.5 FEET	ILM	5.7 FEET
TENS	2.5 FEET	SPAR	2.5 FEET

PARAMETERS

NAME	VALUE	UNIT	NAME	VALUE	UNIT
SBR	1.00000	DHMM	DSEC	7.00000	MMHO
BHS	OPEN		MSEC	7.60000	MMHO
SPDR	.0100000		BS	6.37500	IN