

COMPANY REICHOLD ENERGY CORPORATION
 WELL LONGVIEW FIBER 12-33
 FIELD MIST
 COUNTY COLUMBIA STATE OREGON
 LOCATION 1763' SOUTH & 705' EAST OF THE NORTHWEST CORNER OF: DIG C/AVI
 SPEC. 33 Twp 7N Rpt 5W
 PERMIT No. 9-11-81
 DATE 9-11-81
 RUN No. ONE
 DEPTH - Driver 2414
 DEPTH - Work 2397
 DEPTH - Log 740 @ 441
 DEPTH - Work 440
 BIT SIZE 6 1/4
 TYPE Fluid in Hole LINDSULF
 Dens. 1 9.3 1.47
 pH 1 Fluid Loss 10 1.40 ml
 Source of Sample CIRCULATED
 Run of Work Temp. 1.25 @ 85 F
 Run of Meas. Temp. 2.24 @ 79 F
 Source Fluid Run. MEASURED
 Run of BHT 1.56 @ 106 F
 Firm Street Circ. 2 HRS
 Max. Rec. Temp. 1.05 F @ BHT
 Equip. 1 Location 6586 1 MOD/LAND
 Recorded By J. VOHRLES
 Witnessed By W. BREWER

Service Ticket No 054964 Remarks:

Date	Sample No.	Run No.	DIP	Tool Number
		1		76894
		2		F0RX0
		3		
		4		

Correlated By
 Computed By
 MAND. NO. 90126 TRANS. NO. 81094
 Remarks:

Source	R _m	R _{mf}	R _{mc}
R _m @ Meas. Temp.	@	F	@
R _{mf} @ Meas. Temp.	@	F	@
R _{mc} @ Meas. Temp.	@	F	@
Source: R _m	I	I	I
R _m @ BHT	1.56 @ 106 F	@	F
R _{mf} @ BHT	1.21 @ 106 F	@	F
R _{mc} @ BHT	1.64 @ 106 F	@	F

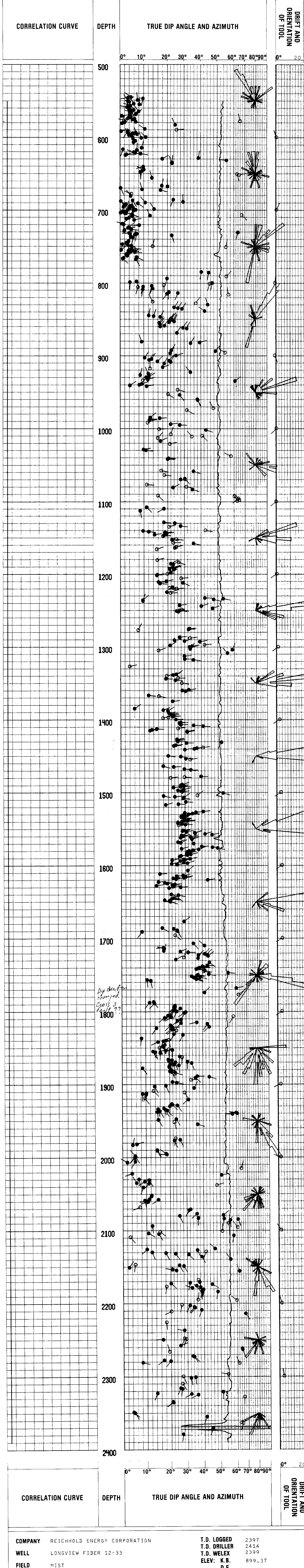
WELLEX does not guarantee the accuracy of any interpretation of log data, conversion of log data to physical rock parameters, or recommendations which may be given by WELLEX personnel or which may appear on the log or in any other form. Any use of such data, interpretations, conversions, or recommendations agrees that WELLEX is not responsible except where due to gross negligence or willful misconduct for any loss, damage, or expenses from the use thereof.

Magnetic Declination NORTH 22° EAST

TABLE OF CONSTANTS FOR DETERMINING VERTICAL DIFFERENCE AT VARIOUS DIP ANGLES

DIP ANGLES Degrees	CONSTANT	DIP ANGLES Degrees	CONSTANT	DIP ANGLES Degrees	CONSTANT	DIP ANGLES Degrees	CONSTANT
1	.0175	11	.194	21	.384	35	.700
2	.035	12	.213	22	.404	40	.839
3	.052	13	.231	23	.425	45	1.000
4	.070	14	.249	24	.445	50	1.192
5	.088	15	.268	25	.466	55	1.428
6	.105	16	.287	26	.487	60	1.732
7	.123	17	.306	27	.509	65	2.144
8	.141	18	.325	28	.531	70	2.748
9	.158	19	.344	29	.554	75	3.732
10	.176	20	.364	30	.577	80	5.671

Vertical difference in feet is obtained by multiplying the constant for any given dip angle by the horizontal distance in feet.
 Example: Dip angle 10°, Horizontal distance 440 ft.
 Vertical difference = 176 x 440 = 77.44



COMPANY	REICHOLD ENERGY CORPORATION	T.D. LOGGED	2397
WELL	LONGVIEW FIBER 12-33	T.D. DRILLER	2414
FIELD	MIST	T.D. WELLEX	2399
COUNTY	COLUMBIA STATE OREGON	ELEV: K.B.	899.37
		D.F.	
		G.L.	887.97