

COMPANY	NAHAMA AND WEAGANT ENERGY CO.	LOCATION	1751 67th & 73rd
WELL	"RAVEN" #12A-33-75	COUNTY	COLUMBIA
FIELD	VIST	STATE	OREGON
DATE	26 MAY 93	LOG MEASURED FROM	KB
LOG MEASURED TO	8885 F	LOG MEASURED TO	8885 F
LOG MEASURED FROM	8885 F	LOG MEASURED FROM	8885 F
LOG MEASURED TO	8885 F	LOG MEASURED TO	8885 F
LOG MEASURED FROM	8885 F	LOG MEASURED FROM	8885 F
LOG MEASURED TO	8885 F	LOG MEASURED TO	8885 F
LOG MEASURED FROM	8885 F	LOG MEASURED FROM	8885 F
LOG MEASURED TO	8885 F	LOG MEASURED TO	8885 F
LOG MEASURED FROM	8885 F	LOG MEASURED FROM	8885 F
LOG MEASURED TO	8885 F	LOG MEASURED TO	8885 F

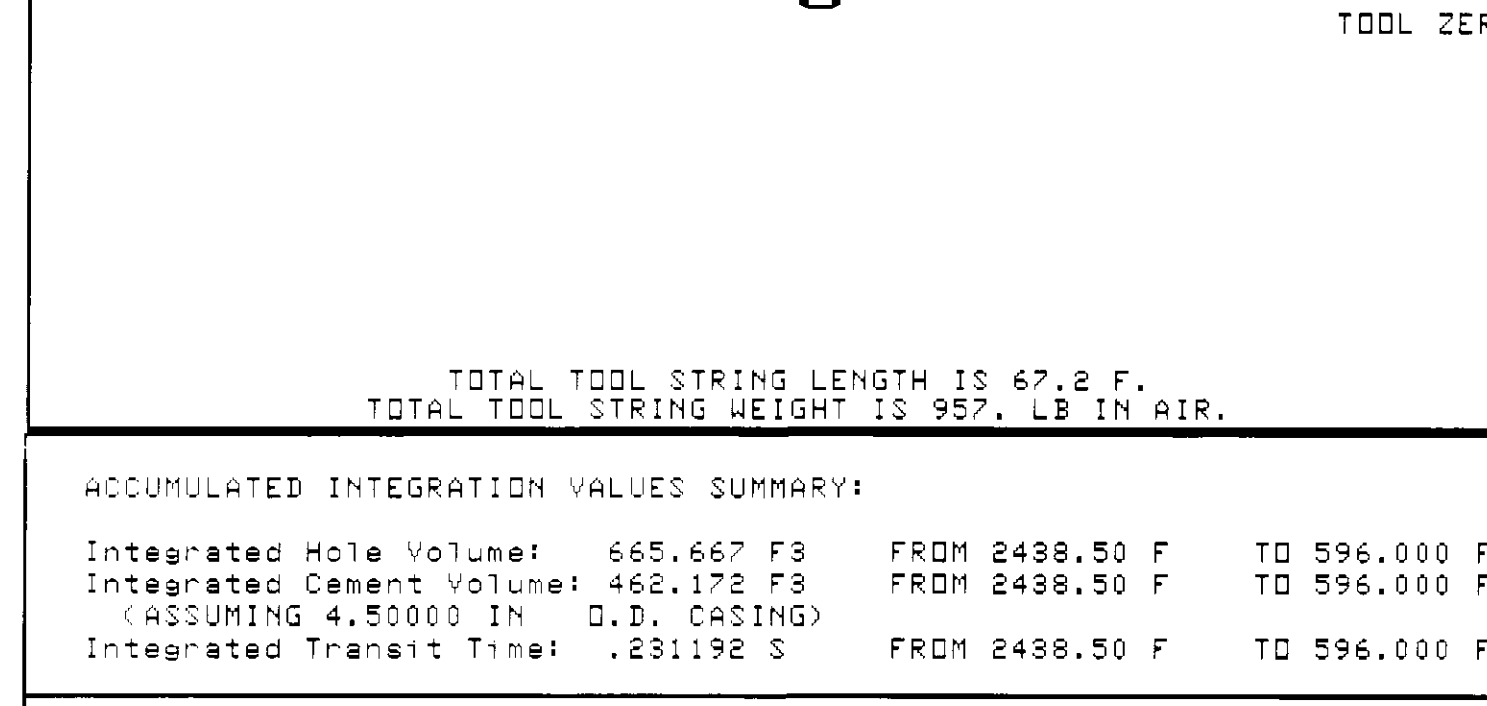
The well name, location and borehole reference data were furnished by the customer.

All interpretations are opinions based on inferences from electrical or other measurements and we cannot, and do not, guarantee the accuracy or correctness of any interpretation, and we shall not, except in the case of gross or willful negligence or carelessness, be liable or responsible for any loss, costs, damages or expenses incurred or sustained by anyone resulting from any interpretations made by any of our officers, agents or employees. These interpretations are also subject to Clause 4 of our General Terms and Conditions as set out in our client's Price Schedule.

Run No.	CNE
Service Order No.	624358
Drilling Fluid Level	5.0 F
Salinity	4000 PPM
Rim @ BHT	2361 CHMM @ 86.0 DEG F
Rim @ BHT	1531 CHMM @ 86.0 DEG F
Logging Speed	3600.0 F/H

Tool Number 1	DIS 1422
Tool Number 2	DIC 1149
Tool Number 3	SLS-WC
Tool Number 4	SLS-MA
Tool Number 5	MCD-B
Tool Number 6	SGC-JC
Tool Number 7	LEM-BO 686
Tool Number 8	SLM-DA 329
Tool Number 9	NLM-BC 456
Tool Number 10	
Tool Number 11	

REMARKS: TWO 15" STANDOFFS RUN ON INDUCTION
TWO CMEZ CENTRALIZERS RUN ON SONIC
UNABLE TO REACH DRILLER'S DUE TO HOLE CONDITIONS
DEPTH DISCREPANCY BETWEEN DRILLER'S CASING DEPTH AND
LOGGER'S CASING DEPTH VERIFIED



TOTAL TOOL STRING LENGTH IS 67.2 F.
TOTAL TOOL STRING WEIGHT IS 957. LB IN AIR.

ACCUMULATED INTEGRATION VALUES SUMMARY:

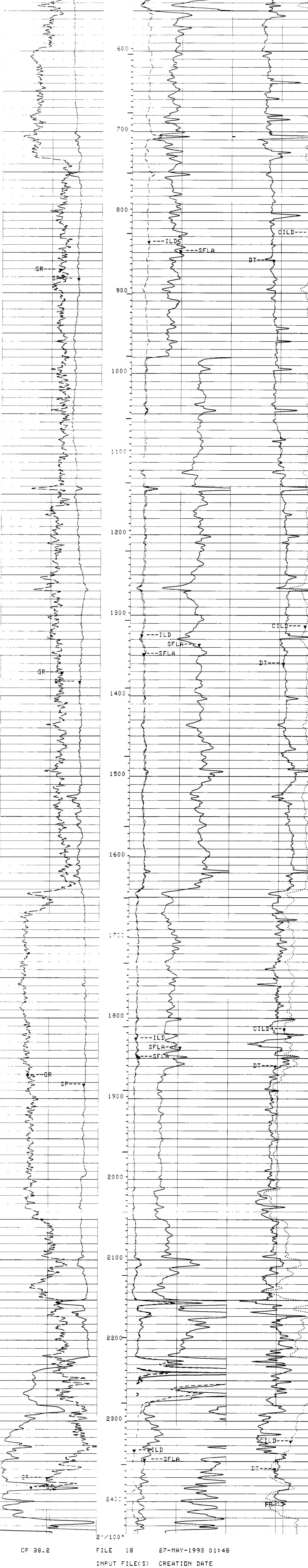
Integrated Hole Volume:	665.667 F3	FROM 2438.50 F	TO 596.000 F
Integrated Cement Volume:	462.173 F3	FROM 2438.50 F	TO 596.000 F
(ASSUMING 4.50000 IN. O.D. CASING)			
Integrated Transit Time:	.231192 S	FROM 2438.50 F	TO 596.000 F

EVENT MARK SUMMARY:

OUTPUT	INTERVAL BETWEEN PIPS	DEPTH TRACK
Integrated Transit Time	.001000000 S	RIGHT EDGE

GR(GAPI)	50.00	SFLA(OHMM)	6.0000	OLDIMM(M)	0.0
SP(MV)	-35.00	SFLA(CHMM)	30.0000	DT(US/F)	75.000

CP 38.2 FILE 18 27-MAY-1993 01:58
INPUT FILE(S) CREATION DATE
4 26-MAY-1993 22:06
10 27-MAY-1993 01:35



CP 38.2 FILE 18 27-MAY-1993 01:48
INPUT FILE(S) CREATION DATE
4 26-MAY-1993 22:06
10 27-MAY-1993 01:35

GR(GAPI)	50.00	SFLA(OHMM)	6.0000	OLDIMM(M)	0.0
SP(MV)	-35.00	SFLA(CHMM)	30.0000	DT(US/F)	75.000

PARAMETERS

PARAMETER	VALUE	UNIT
SPDR - Spontaneous Potential Drift	.0100000	
SMB - Sonic Memory Board	DISA	
VBLR - Defn not found	2IN	
TOCA - TO Connection Status	DISA	
RATE - Firing Rate	15	HZ
DG - Downhole Gain	AUTO	
DETR - Detection	1.00	US
DETR - Near Surface Detection Rate	1.00	US
CBLG - CBL Gate Width	15	US
ANPL - Sonic Amplitude	15	US
SP - Playback Processing	1	
WFM - Waveform Mode	1	
SS - Sweep Speed	FAST	
TOD - TO Delay	DISA	
DTF - Delta-T Fluid	189.000	US/F
DTM - Delta-T Matrix	166.000	US/F
CITS - Correction for Delta-T Shale; Empirical	100.000	
SPS - Sonic Porosity Formula Select	RTH	
PHI - Formation Factor Formula	NOR	
DO - Depth Offset for Logical Unit L11	0.0	F
DD2 - Depth Offset for Logical Unit L12	0.0	F
WMUD - Weight of Mud	9.000	LB/G
MSEC - Medium Sonde Error Correction	6.90000	MM/M
SBR - Shoulder Bed Resistivity	1.00000	OHMM
DSEC - Deep Sonde Error Correction	3.70000	MM/M
FCD - Future Casing Diameter	4.50000	IN
NCUT - NCT Calibration Jig Type	GSRY	
PHI - Formation Factor Formula Porosity	SPH1	
DWCO - Digitizer Word Count	512	
DSIN - Digitizer Sample Interval	50	US
DDEL - Digitizer Delay	200	US
BS - Bit Size	7.87500	IN
BHS - Borehole Status (Open or Cased)	OPEN	

COMPANY	NAHAMA AND WEAGANT ENERGY CO.	SCHL. FR	2735 C F
WELL	"RAVEN" #12A-33-75	SCHL. TD	2447 C F
FIELD	VIST	DLR. TD	2475 C F
COUNTY	COLUMBIA	DR. KB	898 C F
STATE	OREGON	DF	888 C F
		GL	888 B F