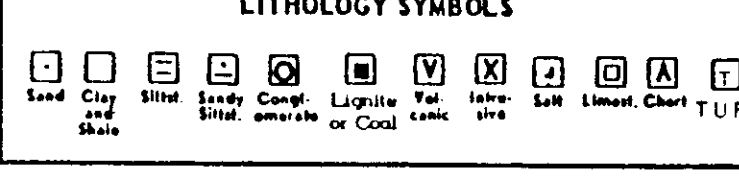
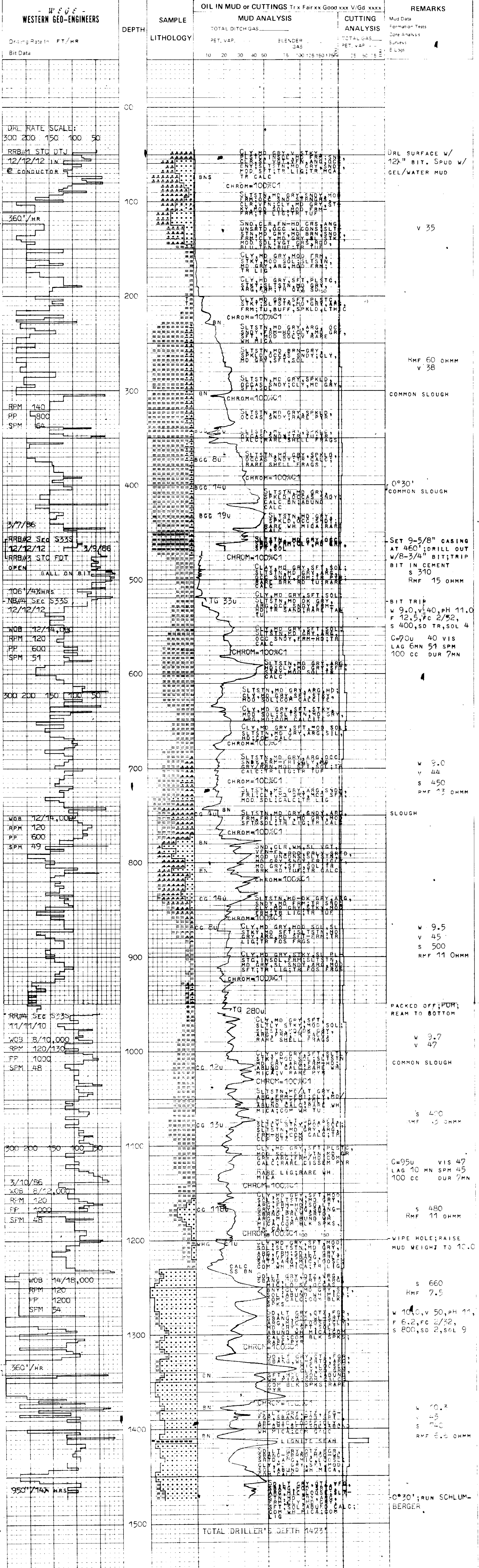


WELL LONGVIEW FIBRE #13-6 COMPANY ARCO OIL & GAS AREA MIST LOCATION N89°15'21"E, 591.62' & S0°44'39"E, 80.61' OF W- CRNR, SEC 6, T5N, R4W COUNTY, STATE COLUMBIA Co., OK	- W E G E - WESTERN GEO-ENGINEERS "A SERVICE TO THE OIL AND GAS INDUSTRY"	LITHOLOGY SYMBOLS 	REMARKS WELL ELEV. GL. 782.16' KB. 793.56' SALINITY IN PPM CL FILTRATE IN CC/30 MIN. GAS TRAP AGITATOR TYPE MUD LIGNOSULFONATE (FROFOC) TAYLOR DRNG CO., RIG #5
MUD DATA W WEIGHT V VISCOSITY F FILTRATE FC FILTER CAKE SD SAND IN %	LEGEND S SALINITY R RESISTIVITY RF FILTRATE RESISTIVITY BIT DATA NB NEW BIT RRB RERUN BIT	CB CORE BIT WLCB WIRE LINE CB OTHER DATA TG TRIP GAS CG CONNECTION GAS C CARBIDE GAS	CR CIRCULATE RETURNS NR NO RETURN DST DRILL STEM TEST DST INTERVAL CORE INTERVAL
DATE 3/6/86 to 3/10/86 DEPTH 45' to 1473' ENGINEERS J. DUVALL B. FORTWOLD			CASING 9 5/8" TO 460' TO TO



ARCO OIL & GAS, LONGVIEW FIBRE #13-6, SEC 6, T5N, R4W, W&N, MIST, COLUMBIA Co., OK