

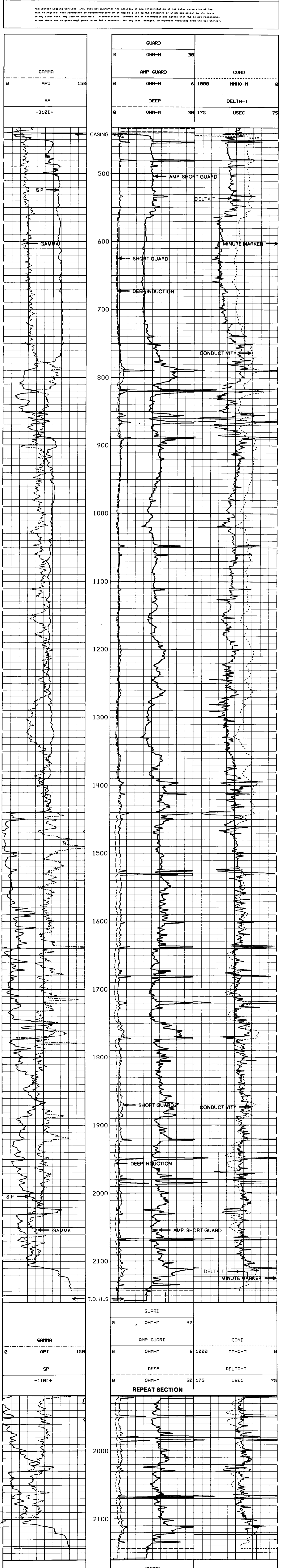
DUAL INDUCTION
ACOUSTIC VELOCITY
LOG

FINAL PRINT COMPANY NUMBER AND HEIGHT ENERGY CO.
L.F. NO. 13-95-65

COMPANY _____
WELL _____
FIELD _____
COUNTY _____
STATE OR OTHER SERVICES _____
COUNTY COLUMBIA
API NO. 38-009-00272
LOCATION : 2224 FEET NORTH AND THE
1193 FEET EAST FROM THE
SOUTHWEST CORNER OF :
SEC. 35 T. 1P. 8N
PERMITS DRUM G. L. 11. ELEV. 694.2
LOG MEASURED FROM K.B. 11.5 FT. ABOVE PERM. DRUM
LOG MEASURED FROM K.B. 11.5 FT. ABOVE PERM. DRUM
DIPLOMER
ELEV. K.B. 665.7
D.F. 54.2
G.L. 654.2
LOG MEASURED FROM K.B. 11.5 FT. ABOVE PERM. DRUM
DIPLOMER
ELEV. K.B. 665.7
D.F. 54.2
G.L. 654.2

DATE/DEPTH 11/16/90/ONE
TYPE LOG ONE
TYPE FLUID
DENS. : VISC. :
pH. : FLUID LOSS :
SOURCE OF SAMPLE :
RM @ MEAS. TEMP. :
Rmf @ MEAS. TEMP. :
Rmc @ MEAS. TEMP. :
Source: Rmf:Rmc :
RM @ BHT 1.15 @102
Rmf @ BHT 1.36 @102
Rmc @ BHT 1.06 @102
RESISTIVITY EQUIPMENT DATA
Run No. Tool Type & No. Pad Type Tool Pos. Other
ONE DUSL #W109432 N/A 1.5"S.O. M412
ONE SGRD #W108932 N/A 1.5"S.O. M405
EQUIPMENT DATA
GAMMA ACUSTIC DENSITY NEUTRON
Run No. ONE Run No. ONE Run No. N/A Run No. N/A
Serial No. W108580 Serial No. W109088 Serial No. W109740 Serial No. W108749
Model No. M432 Model No. M305 Model No. M465 Model No. M434
Diameter 3 5/8 No. of Cent. FOUR Diameter 4 1/2 Diameter 3 5/8
Detector Model No. M432 Spacing 1 FOOT Log Type GAMMA Log Type THERMAL
Type SCINT. Source Type CS137 Source Type AM241BE
Length 4 IN. LSA YES Serial No. 047 Serial No. 25
Distance To Source N/A FWDA NO Strength 1.5 CU Strength 19 CU
LOGGING DATA
GENERAL GAMMA ACUSTIC DENSITY NEUTRON
Run No. Depth Speed Scale Scale Scale Scale
No. From To Ft/Min L R L R Matrix L R Matrix L R Matrix
ONE 2157 442 30 0 150 175 75 57 L R Matrix L R Matrix

Remarks: ANNULAR HOLE VOLUME CALCULATED USING 4 1/2 INCH CASING.
CREW ON LOCATION: EMERSON, JEFFREY.
THANK YOU FOR USING HALLIBURTON LOGGING SERVICES!
Halliburton Logging Services, Inc. does not guarantee the accuracy of any interpretation of log data, conversion of log data to physical rock parameters or recommendations which may be given by HLS personnel or which may appear on the log or in any other form. Any user of such data, interpretations, conversions or recommendations agrees that HLS is not responsible except where due to gross negligence or willful misconduct, for any loss, damage, or expense resulting from the use thereof.



Log plot details including scale and annotations. The plot shows four tracks: GAMMA (API 150), SP (-110C+), ACUSTIC (OHM-M 30), DENSITY (OHM-M 6 1000), and NEUTRON (OHM-M 30 175). Annotations include 'AMP SHORT GUARD' at approximately 500 feet, 'DEEP INDUCTION' at approximately 650 feet, 'CONDUCTIVITY' at approximately 750 feet, and another 'AMP SHORT GUARD' at approximately 2050 feet. A 'REPEAT SECTION' is indicated from 2000 to 2100 feet. The plot ends at 'T.D. H.S.' at 2100 feet.