

COMPANY: **WELL**
FIELD: **STATE**
COUNTY: **STATE**
WELL NO.: **STATE**
LOG NO.: **STATE**
DATE: **STATE**
LOGGERS: **STATE**

LOGGING SERVICES INC.
NORTH AVENUE, SUITE 100
HOUSTON, TEXAS 77002-1140
PHONE: 713-641-1000
FAX: 713-641-1001

LOGGING SERVICES INC.
NORTH AVENUE, SUITE 100
HOUSTON, TEXAS 77002-1140
PHONE: 713-641-1000
FAX: 713-641-1001

LOGGING SERVICES INC.
NORTH AVENUE, SUITE 100
HOUSTON, TEXAS 77002-1140
PHONE: 713-641-1000
FAX: 713-641-1001

LOGGING SERVICES INC.
NORTH AVENUE, SUITE 100
HOUSTON, TEXAS 77002-1140
PHONE: 713-641-1000
FAX: 713-641-1001

LOGGING SERVICES INC.
NORTH AVENUE, SUITE 100
HOUSTON, TEXAS 77002-1140
PHONE: 713-641-1000
FAX: 713-641-1001

LOGGING SERVICES INC.
NORTH AVENUE, SUITE 100
HOUSTON, TEXAS 77002-1140
PHONE: 713-641-1000
FAX: 713-641-1001

LOGGING SERVICES INC.
NORTH AVENUE, SUITE 100
HOUSTON, TEXAS 77002-1140
PHONE: 713-641-1000
FAX: 713-641-1001

LOGGING SERVICES INC.
NORTH AVENUE, SUITE 100
HOUSTON, TEXAS 77002-1140
PHONE: 713-641-1000
FAX: 713-641-1001

LOGGING SERVICES INC.
NORTH AVENUE, SUITE 100
HOUSTON, TEXAS 77002-1140
PHONE: 713-641-1000
FAX: 713-641-1001

LOGGING SERVICES INC.
NORTH AVENUE, SUITE 100
HOUSTON, TEXAS 77002-1140
PHONE: 713-641-1000
FAX: 713-641-1001

LOGGING SERVICES INC.
NORTH AVENUE, SUITE 100
HOUSTON, TEXAS 77002-1140
PHONE: 713-641-1000
FAX: 713-641-1001

LOGGING SERVICES INC.
NORTH AVENUE, SUITE 100
HOUSTON, TEXAS 77002-1140
PHONE: 713-641-1000
FAX: 713-641-1001

LOGGING SERVICES INC.
NORTH AVENUE, SUITE 100
HOUSTON, TEXAS 77002-1140
PHONE: 713-641-1000
FAX: 713-641-1001

LOGGING SERVICES INC.
NORTH AVENUE, SUITE 100
HOUSTON, TEXAS 77002-1140
PHONE: 713-641-1000
FAX: 713-641-1001

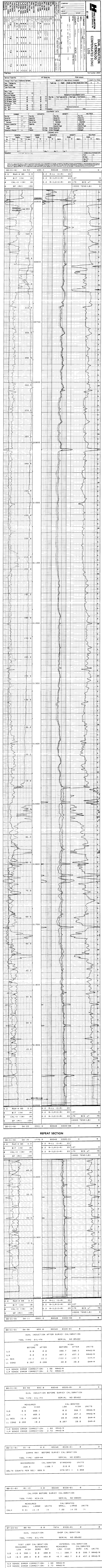
LOGGING SERVICES INC.
NORTH AVENUE, SUITE 100
HOUSTON, TEXAS 77002-1140
PHONE: 713-641-1000
FAX: 713-641-1001

LOGGING SERVICES INC.
NORTH AVENUE, SUITE 100
HOUSTON, TEXAS 77002-1140
PHONE: 713-641-1000
FAX: 713-641-1001

LOGGING SERVICES INC.
NORTH AVENUE, SUITE 100
HOUSTON, TEXAS 77002-1140
PHONE: 713-641-1000
FAX: 713-641-1001

LOGGING SERVICES INC.
NORTH AVENUE, SUITE 100
HOUSTON, TEXAS 77002-1140
PHONE: 713-641-1000
FAX: 713-641-1001

LOGGING SERVICES INC.
NORTH AVENUE, SUITE 100
HOUSTON, TEXAS 77002-1140
PHONE: 713-641-1000
FAX: 713-641-1001



REPEAT SECTION

08-31-91	04:15	1770.5	68248	0326-01	0	5
0.0	RWA-φ BS	3.0	0.2	R-LL (Ω-M)	20	
6	BIT (IN)	16	0.2	R-ILM (Ω-M)	20	-27
6	CAL-X (IN)	16	0.2	R-ILD (Ω-M)	20	175
0	SP (MV)	100				BCS ΔT
						10000 TENS (LB)

08-31-91	04:16	0.0	68248	0326-01	0	2
GAMMA RAY BEFORE SURVEY CALIBRATION						
TOOL TYPE: UGR-HA SERIAL NO: 03051						
BACKGROUND CALIBRATOR STANDARD UNITS						
239.8 1109.7 218.0 3.991						
DELTA COUNTS PER SEC: 869.9 CPS/API = 3.991						

08-31-91	01:13	3.0	68248	0326-01	0	1
CALIPER BEFORE SURVEY CALIBRATION						
TOOL TYPE: XCA-CA SERIAL NO: 00993						
MEASURED SMALL LARGE UNITS CALIBRATED SMALL LARGE UNITS						
CALX 6.81 14.15 IN 7.00 14.00 IN						

07-23-91	08:58	0.0	7574	0326-01	0	0
DUAL INDUCTION SHOP CALIBRATION						
TOOL TYPE: DIL-FA SERIAL NO: 05492						
TEST LOOP CALIBRATION INTERNAL CALIBRATION						
MEASURED REFERENCE MEASURED CALIBRATED						
LOW HIGH ZERO REF LOW HIGH ZERO CAL UNITS						
ILD -2.8 398.1 0.0 400.0 -1.1 398.7 0.0 398.7 MMHO/M						
ILM -9.5 466.4 0.0 464.0 -6.7 462.7 0.0 457.2 MMHO/M						
ILD SONDE ERROR CORRECTION: 1.68 MMHO/M						
ILM SONDE ERROR CORRECTION: 2.72 MMHO/M						

08-31-91	03:56	653.0	68248	0326-01	0	3
DUAL INDUCTION BEFORE SURVEY CALIBRATION						
TOOL TYPE: DIL-FA SERIAL NO: 05492						
MEASURED LOW HIGH CALIBRATED LOW HIGH UNITS						
ILD 0.6 398.1 0.0 398.7 MMHO/M						
ILM -1.8 465.2 0.0 457.2 MMHO/M						
LL RES 19.4 1493.8 20.0 1500.0 OHM-M						
LL COND 0.266 19.4 0.267 20.0 OHM-M						
ILD SONDE ERROR CORRECTION: 1.68 MMHO/M						
ILM SONDE ERROR CORRECTION: 2.72 MMHO/M						

08-31-91	04:56	655.0	68248	0326-01	0	4
DUAL INDUCTION AFTER SURVEY CALIBRATION						
TOOL TYPE: DIL-FA SERIAL NO: 05492						
LOW BEFORE AFTER HIGH BEFORE AFTER UNITS						
ILD 0.0 0.0 398.7 398.3 MMHO/M						
ILM 0.0 0.0 457.2 457.2 MMHO/M						
LL RES 20.0 20.0 1500.0 1492.5 OHM-M						
LL COND 0.267 0.266 20.0 20.0 OHM-M						
ILD SONDE ERROR CORRECTION: 1.68 MMHO/M						
ILM SONDE ERROR CORRECTION: 2.72 MMHO/M						