

COMPANY: ARCO OIL AND GAS COMPANY
 WELL: LONGVIEW FIBRE 423-25
 FIELD: MIST GAS FIELD
 COUNTY: COLUMBIA
 STATE: OREGON
 LOCATION: 3050'S & 1800'E OF THE NW CORNER OF SEC: 25 TWP: 6N RGE: 5W

PERMANENT DATUM: GEO. DATUM: 692.0 F
 ELEV. OF PERM. DATUM: 692.0 F
 LOG MEASURED FROM: PERM. DATUM
 DRLG. MEASURED FROM: KB
 ELEVATIONS:
 TBS: 912.0 F
 DFI: 912.0 F
 GL: 692.0 F

DATE: 7 DEC 85
 RUN NO: 1

DEPTH-DRILLER: 1978.0 F
 DEPTH-LOGGER: 1976.0 F
 BTM LOG INTERVAL: 1976.0 F
 TDP LOG INTERVAL: 418.0 F
 CASING-DRILLER: 417.0 F
 CASING-LOGGER: 417.0 F
 CASING: 9.625
 WEIGHT: 8.25
 BIT SIZE: 1978.0 F
 DEPTH: 1978.0 F

OTHER SERVICES:
 BHC
 FDC-CHL-GR
 HDT
 SAT
 SMS

PROGRAM:
 THIS LOG
 ORDER NO:
 450596

RECEIVED - PILD
 JAN 14 1986
 DEPT. OF GEOLOGY
 UNIVERSITY OF OREGON

TYPE FLUID IN HOLE: GEL POLYMER
 DENSITY: 13.10 LB/G
 VISCOSITY: 50.0 S
 PH: 9.8
 FLUID LOSS: 5.2 C3
 SOURCE OF SAMPLE: FLOWLINE
 RM: 4.310 OHMM AT 62.0 DEGF
 RMF: 4.150 OHMM AT 47.0 DEGF
 RMC: 5.450 OHMM AT 52.0 DEGF
 SOURCE RMF/RMC: MEASURED/MEASURED
 RM AT BHT: 3.379 OHMM AT 81.0 DEGF
 RMF AT BHT: 2.547 OHMM AT 81.0 DEGF
 RMC AT BHT: 3.654 OHMM AT 81.0 DEGF

TIME CIRC. STOPPED: 06:00 12-7
 TIME LOGGER ON BTM.: 16:00 12-7

MAX. REC. TEMP: 81.0 DEGF

LOGGING UNIT NO: 8126
 LOGGING UNIT LOC: SACRAMENTO
 RECORDED BY: REINIG
 WITNESSED BY: ANDERSON

REMARKS:
 RUN IN COMBINATION WITH BHC-SONIC
 SALINITY = 800PPM CL-

EQUIPMENT NUMBERS-
 DIS-EC 1342 DIC-DA 1386 MCD-DA 1186 SLS-RC 1082
 SLC-FA 1259 SGC-JAA 466 SLM-DA 428 NLM-BC 456

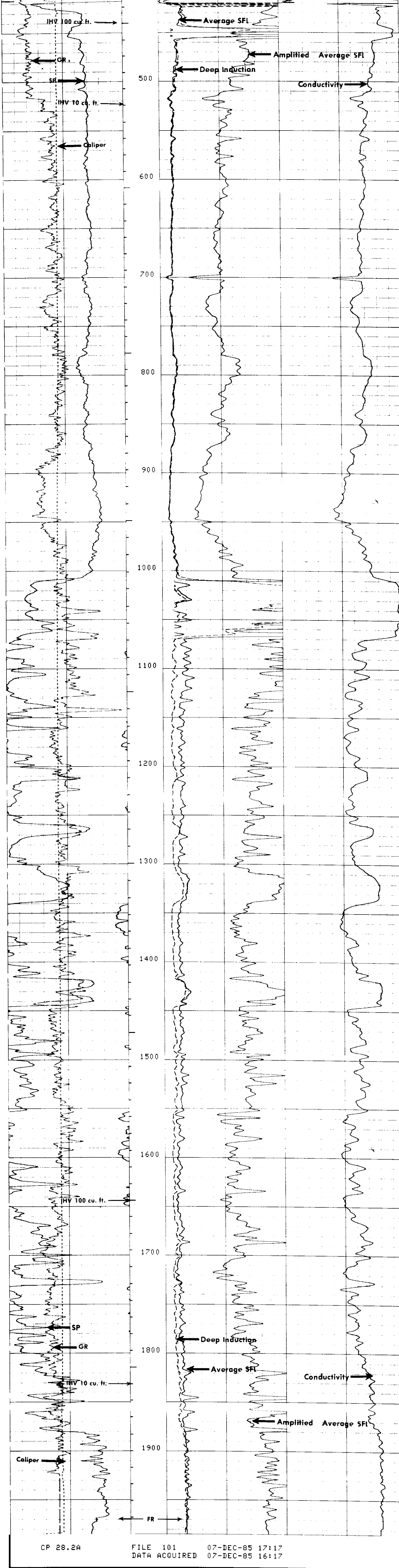
ALL INTERPRETATIONS ARE OPINIONS BASED ON INFERENCES FROM ELECTRICAL OR OTHER MEASUREMENTS AND WE CANNOT, AND DO NOT GUARANTEE THE ACCURACY OR CORRECTNESS OF ANY INTERPRETATIONS, AND WE SHALL NOT, EXCEPT IN THE CASE OF GROSS OR WILLFUL NEGLIGENCE ON OUR PART, BE LIABLE OR RESPONSIBLE FOR ANY LOSS, COSTS, DAMAGES OR EXPENSES INCURRED OR SUSTAINED BY ANYONE RESULTING FROM ANY INTERPRETATION MADE BY ANY OF OUR OFFICERS, AGENTS OR EMPLOYEES. THESE INTERPRETATIONS ARE ALSO SUBJECT TO OUR GENERAL TERMS AND CONDITIONS AS SET OUT IN OUR CURRENT PRICE SCHEDULE.

CP 28.2A FILE 102 07-DEC-85 17:26
 DATA ACQUIRED 07-DEC-85 16:51

EVENT MARK SUMMARY:
 OUTPUT INTERVAL DEPTH TRACK
 BETWEEN PIPS EDGE
 IHV 10.0000 F3 LEFT EDGE

GR (GAPI)	150.00	SFLA (OHMM)	0.0	6.0000
CALI (IN.)	16.0000	SFLA (OHMM)	0.0	30.0000
SP (MV)	0.0	ILD (OHMM)	0.0	30.0000 1000.0
				CILD (MMHO) 0.0

CP 28.2A FILE 101 07-DEC-85 17:21
 DATA ACQUIRED 07-DEC-85 16:51



CP 28.2A FILE 101 07-DEC-85 17:17
 DATA ACQUIRED 07-DEC-85 16:17

GR (GAPI)	150.00	SFLA (OHMM)	0.0	6.0000
CALI (IN.)	16.0000	SFLA (OHMM)	0.0	30.0000
SP (MV)	0.0	ILD (OHMM)	0.0	30.0000 1000.0
				CILD (MMHO) 0.0

SENSOR MEASURE POINT TO TOOL ZERO

SRAT 41.4 FEET	AMPL 43.9 FEET
TT1 42.9 FEET	CBL 43.9 FEET
TT3 40.2 FEET	TT2 43.9 FEET
T0 43.9 FEET	TT4 39.2 FEET
SLTT 43.9 FEET	TT 43.9 FEET
GR 64.1 FEET	SCBL 43.9 FEET
ILD 9.4 FEET	CALI 31.8 FEET
FL 6.4 FEET	ILM 5.8 FEET
SPAR 2.5 FEET	SP 2.5 FEET
NDIS 2.5 FEET	TENS 2.5 FEET

PARAMETERS

NAME	VALUE	UNIT	NAME	VALUE	UNIT
CDTS	100.000		SPFS	R-H	
DTF	189.000	US/F	DTM	56.0000	US/F
DSIN	5	US	DBEL	200	US
WMUD	8.00000	LB/G	DWCO	512	
SP	1.00000	OHMM	DSEC	5.80000	MMHO
FPHI	SPHI		MFT	7.60000	MMHO
FNUM	620000		FEXP	2.15000	
BS	8.25000	IN	BHS	OPEN	
PP	NORM		ID	0.0	F