

EST. 10/28/88

2" FDC/CNL/GR

CSU

COMPANY: REICHHOLD ENERGY CORPORATION
 WELL: LONGVIEW FIBRE #23-36

FIELD: MIST
 COUNTY: COLUMBIA
 STATE: OREGON

LOCATION: 2582.63' NORTH & 470.34' W
 SOUTH 1/4 CORNER
 SEC: 36 T1P1 6N RGE: 5M

PERMANENT DATUM: GL
 ELEV. OF PERM. DATUM: 588.0 F
 LOG MEASURED FROM: KB
 DRLG. MEASURED FROM: KB
 12.0 F ABOVE PERM. DATUM
 GL: 588.0 F

DATE: 10 DEC 84
 RUN NO: 1

DEPTH-DRILLER: 1879.0 F
 DEPTH-LOGGER: 1876.0 F
 BTM. LOG INTERVAL: 1870.0 F
 TOP LOG INTERVAL: 353.0 F

CASING-DRILLER: 341 F
 CASING-LOGGER: 353 F
 CASING: 8 5/8"

BIT SIZE: 7 7/8"
 DEPTH: 1879 F

OTHER SERVICES-
 DIL
 FDC/CNL/GR
 HDT

PROGRAM
 TAPE NO:
 26.2
 SERVICE
 ORDER NO:
 432182

RECEIVED - PILD
 FEB 7 1985

DEPT. OF ENERGY
 SACRAMENTO, CALIF.

TYPE FLUID IN HOLE: GEL/LIGND
 DENSITY: 11.3 LB/G
 VISCOSITY: 53.0 S
 PH: 8.5
 FLUID LOSS: 5.4 C3
 SOURCE OF SAMPLE: FLOWLINE
 RM: 2.010 DHMM AT 60.0 DEGF
 RMF: 2.300 DHMM AT 45.0 DEGF
 RMC: 3.130 DHMM AT 45.0 DEGF
 SOURCE RMF/RMC: MEAS/MEAS
 RM AT BHT: 1.103 DHMM AT 115. DEGF
 RMF AT BHT: .980 DHMM AT 115. DEGF
 RMC AT BHT: 1.334 DHMM AT 115. DEGF

TIME CIRC. STOPPED: 15:00 12-10
 TIME LOGGER ON BTH.: 23:52 12-10

MAX. REC. TEMP: 115.0 DEGF

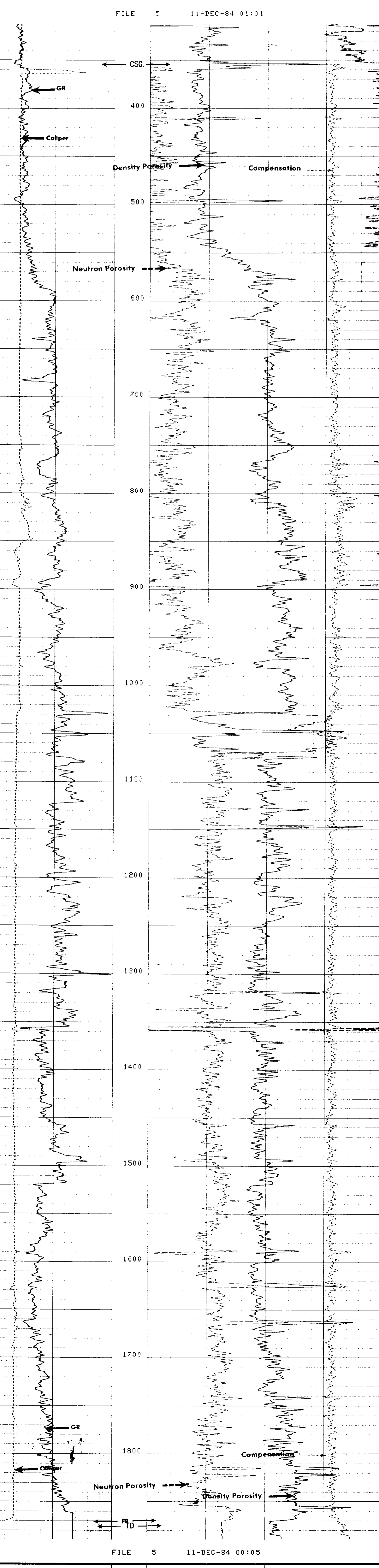
LOGGING UNIT NO: 8178
 LOGGING UNIT LOC: SACRAMENTO
 RECORDED BY: SSTER
 WITNESSED BY: ALGER

REMARKS:

EQUIPMENT NUMBERS-
 CNC 1132 CNB 1192 PGS 599 PDH 1176
 GSR 0016 SFT 477 NLM 699 SGC 1528

ALL INTERPRETATIONS ARE OPINIONS BASED ON INFERENCES FROM ELECTRICAL OR OTHER MEASUREMENTS AND WE CANNOT, AND DO NOT GUARANTEE THE ACCURACY OR CORRECTNESS OF ANY INTERPRETATIONS, AND WE SHALL NOT, EXCEPT IN THE CASE OF GROSS OR WILLFUL NEGLIGENCE ON OUR PART, BE LIABLE OR RESPONSIBLE FOR ANY LOSS, COSTS, DAMAGES OR EXPENSES INCURRED OR SUSTAINED BY ANYONE RESULTING FROM ANY INTERPRETATION MADE BY ANY OF OUR OFFICERS, AGENTS OR EMPLOYEES. THESE INTERPRETATIONS ARE ALSO SUBJECT TO OUR GENERAL TERMS AND CONDITIONS AS SET OUT IN OUR CURRENT PRICE SCHEDULE.

CALI(IN)	6.0000	16.0000	DPHI	DRHO(G/C3)	-.2500	.25000
GR (GAPI)	0.0	150.00	NPHI			0.0



CALI(IN)	6.0000	16.0000	DPHI	DRHO(G/C3)	-.2500	.25000
GR (GAPI)	0.0	150.00	NPHI			0.0

SENSOR MEASURE POINT TO TOOL ZERO
 NCNL 18.0 FEET GR 26.5 FEET
 FFDC 2.7 FEET FCNL 18.0 FEET
 CALI 2.7 FEET NFCL 2.7 FEET
 NRAT 18.0 FEET TENS -.2 FEET

NAME	VALUE	UNIT	NAME	VALUE	UNIT
HC	CALI		PSNR	2.28000	
FD	1.00000	G/C3	MATR	SAND	
FFDC	ALLD		MDEN	2.65000	G/C3
FEXP	2.00000		BHF	WATE	
BHS	OPEN		FNUM	1.00000	
BS	7.87500	IN			