

**DIP LOG
 CALCULATIONS**

COMPANY: REICHHOLD ENERGY CORPORATION
 WELL: LONGVIEW FIBER NO. 24-12
 FIELD: MIST NEHALEM BASIN
 COUNTY: COLUMBIA STATE: OREGON
 LOCATION: 987' NORTH & 759' WEST FROM THE CLAV SOUTH 1/4 CORNER OF: D15
 SEC: 12 Twp: 6N Rgn: 5W
 PERMANENT DATUM: G.L. OR Hwy: 629.69 Elev: K.R. 640.19
 LOW MEASUREMENT FROM: K.B. D1 Answer Perm Datum: D1 629.26
 DATE: 8-16-80
 RUN BY: ONE
 DIPPED BY: 2839
 DRAWN BY: 2832
 TOP LOG DEPTH: 400
 CASE NO.: 404
 CASON: 404
 BIT SIZE: 6.114
 TYPE: Filled in Hole
 DIPS: 1 Vac: 75 138-42
 SOURCE OF SAMPLE: CIRCULATED
 Rm @ Meas. Temp: 1.20 @ 76 F
 MEASURED: 0.92 @ 105 F
 N/A
 105 F @ BHT: 1.26 @ 105 F
 W. BRUER

Service Ticket No. 10000777
 Change in Mud Type or Additional Samples

Date	Sample No.	Depth - Driller	Type Fluid in Hole	Dens.	Visc.	pH	Fluid Loss	Source of Sample	Rm @ Meas. Temp.	Rm @ Meas. Temp.	Rmc @ Meas. Temp.	Source - Rm	Rm @ BHT	Rm @ BHT	Rmc @ BHT

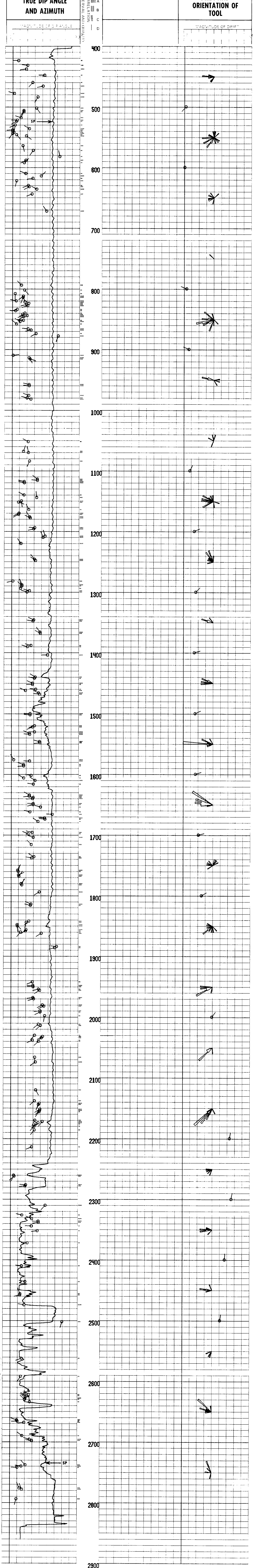
Magnetic Declination: NORTH 21° EAST

TABLE OF CONSTANTS FOR DETERMINING VERTICAL DIFFERENCE AT VARIOUS DIP ANGLES

DIP ANGLES Degrees	CONSTANT	DIP ANGLES Degrees	CONSTANT	DIP ANGLES Degrees	CONSTANT	DIP ANGLES Degrees	CONSTANT
1	0.175	11	194	21	384	31	730
2	0.35	12	213	22	404	40	839
3	0.52	13	231	23	425	45	1,000
4	0.70	14	249	24	445	50	1,192
5	0.88	15	268	25	466	55	1,428
6	1.05	16	287	26	487	60	1,732
7	1.23	17	306	27	509	65	2,144
8	1.41	18	325	28	531	70	2,748
9	1.58	19	344	29	554	75	3,732
10	1.76	20	364	30	577	80	5,671

Vertical difference in feet is obtained by multiplying the constant for any given dip angle by the horizontal distance in feet.
 Example: Dip angle 10°. Horizontal distance 440 ft
 Vertical difference = .176 x 440 = 77.44

GRAPHIC PRESENTATION



REICHHOLD ENERGY CORPORATION LONGVIEW FIBER NO. 24-12 MIST NEHALEM BASIN COLUMBIA COUNTY, OREGON	T.D. LOGGED 2030 T.D. DRILLER 2039 T.D. WELEX 2032
---	--