



# DIP LOG CALCULATIONS

COMPANY AMERICAN QUASAR PETROLEUM COMPANY

WELL LONG VEIW FIBER 25-33  
FIELD WILD CAT  
COUNTY COLUMBIA STATE OREGON

PERMANENT DATUM GL Elev. 777.5  
GL 777.5  
GL 777.5

DATE 9-9-79  
DRILLER T.D. DRILLER  
BORN LOG INTER. 3145

CHANGE IN MUD TYPE OR ADDITIONAL SAMPLES  
DATE SAMPLE NO. 1  
DEPTH - DRILLER 1  
TYPE FLUID IN HOLE

PH Fluid Visc. I ml  
Rm @ Meas. Temp. @ °F  
Rmc @ Meas. Temp. @ °F  
Rm @ BHT 1.73 @ 115 °F  
Rmf @ BHT 1.36 @ 115 °F  
Rmc @ BHT 1.59 @ 115 °F

Run No.	1	2	3	4
Tool Type	DIP			
Tool Number	13363			
Pad Type				
Correlated By				
TRANS. NO.	15217			
MAND. NO.	12613			

Field Here  
Service Ticket No. 048900  
048895  
Remarks:  
Change in Mud Type or Additional Samples  
Date Sample No. 1  
Depth - Driller 1  
Type Fluid in Hole  
PH Fluid Visc. I ml  
Rm @ Meas. Temp. @ °F  
Rmc @ Meas. Temp. @ °F  
Rm @ BHT 1.73 @ 115 °F  
Rmf @ BHT 1.36 @ 115 °F  
Rmc @ BHT 1.59 @ 115 °F

Welex does not guarantee the accuracy of any interpretation of log data, conversion of log data to physical rock parameters, or recommendations which may be given by Welex personnel or which may appear on the log or in any other form. Any user of such data, interpretations, conversions, or recommendations agrees that Welex is not responsible, except where due to gross negligence or willful misconduct, for any loss, damages, or expenses from the use thereof.

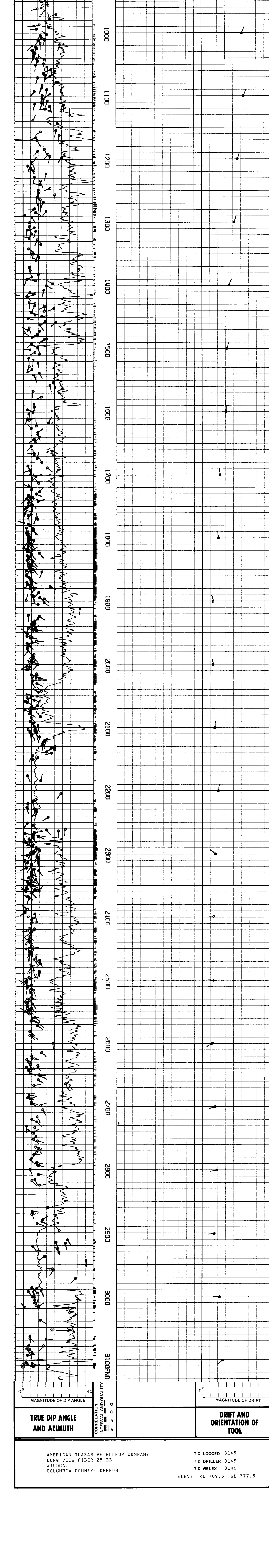
Magnetic Declination NORTH 20.5 EAST

## TABLE OF CONSTANTS FOR DETERMINING VERTICAL DIFFERENCE AT VARIOUS DIP ANGLES

DIP ANGLES Degrees	CONSTANT	DIP ANGLES Degrees	CONSTANT	DIP ANGLES Degrees	CONSTANT	DIP ANGLES Degrees	CONSTANT
1	.0175	11	.194	21	.384	35	.700
2	.035	12	.213	22	.404	40	.839
3	.052	13	.231	23	.425	45	1.000
4	.070	14	.249	24	.445	50	1.192
5	.088	15	.268	25	.466	55	1.428
6	.105	16	.287	26	.487	60	1.732
7	.123	17	.306	27	.509	65	2.144
8	.141	18	.325	28	.531	70	2.748
9	.158	19	.344	29	.554	75	3.732
10	.176	20	.364	30	.577	80	5.671

Vertical difference in feet is obtained by multiplying the constant for any given dip angle by the horizontal distance in feet.  
Example: Dip angle 10°, Horizontal distance 440 ft.  
Vertical difference = .176 x 440 = 77.44

## GRAPHIC PRESENTATION



AMERICAN QUASAR PETROLEUM COMPANY  
LONG VEIW FIBER 25-33  
WILD CAT  
COLUMBIA COUNTY, OREGON

T.D. LOGGED 3145  
T.D. DRILLER 3145  
T.D. WELEX 3146  
ELEV: KB 789.5 GL 777.5