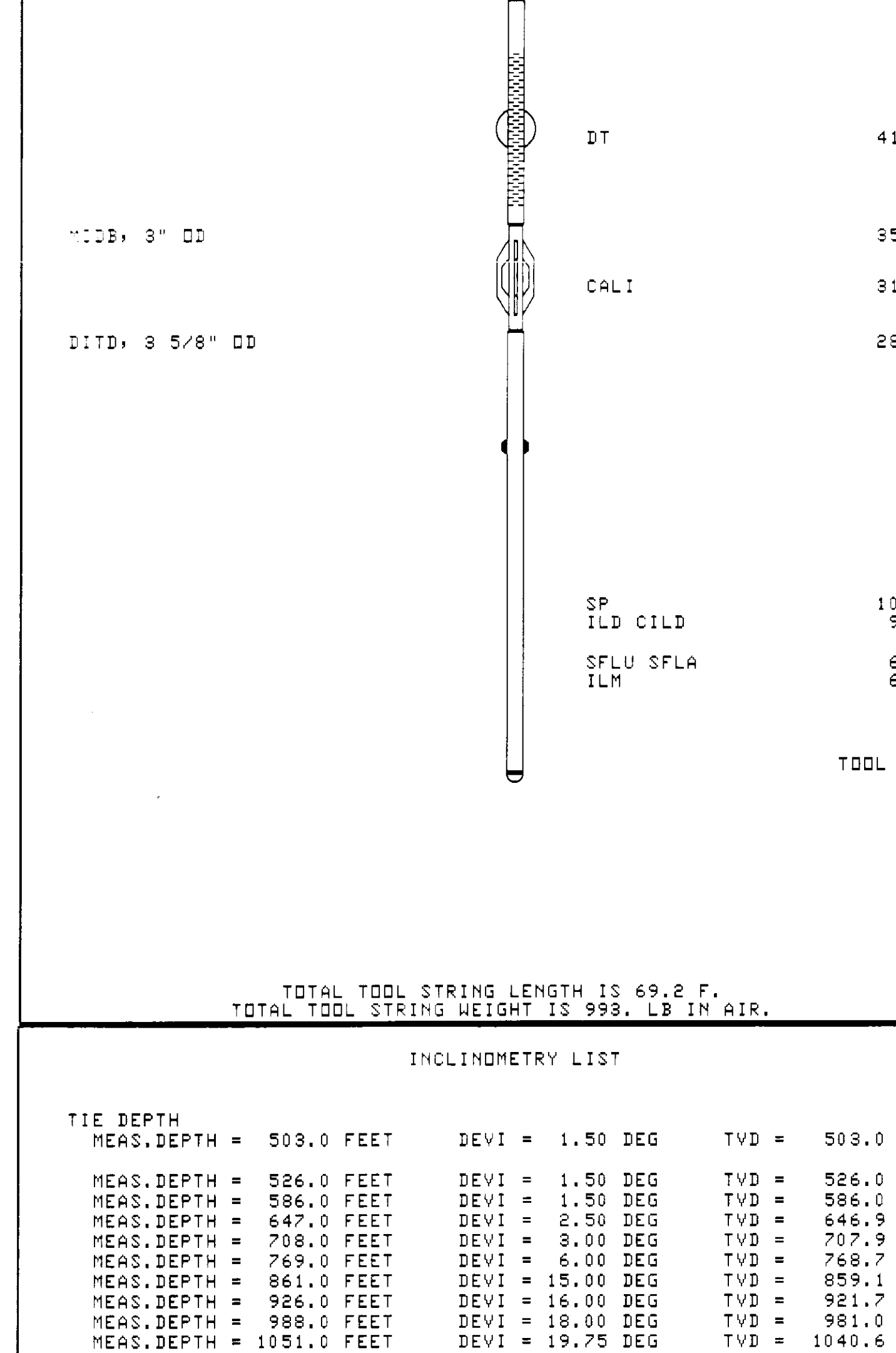


WELL: "KING" LF #31-36-65
 COUNTY: COLUMBIA STATE: OREGON
 FIELD: MST
 LOCATION: 2415W & 189S
 COMPANY: NAHAMA & WEAGANT
 DATE: 03-AUG-93
 TIME: 15:04

LOGGING TOOLS:
 Tool Number 1: DIC-EC 1422
 Tool Number 2: DIC-DA 145
 Tool Number 3: MCD-DA 668
 Tool Number 4: SLC-MA 169
 Tool Number 5: SLS-WA 389
 Tool Number 6: SG-E 3206
 Tool Number 7: IEM-BD 886
 Tool Number 8: SLM-DA 328
 Tool Number 9: NLM-BC 458



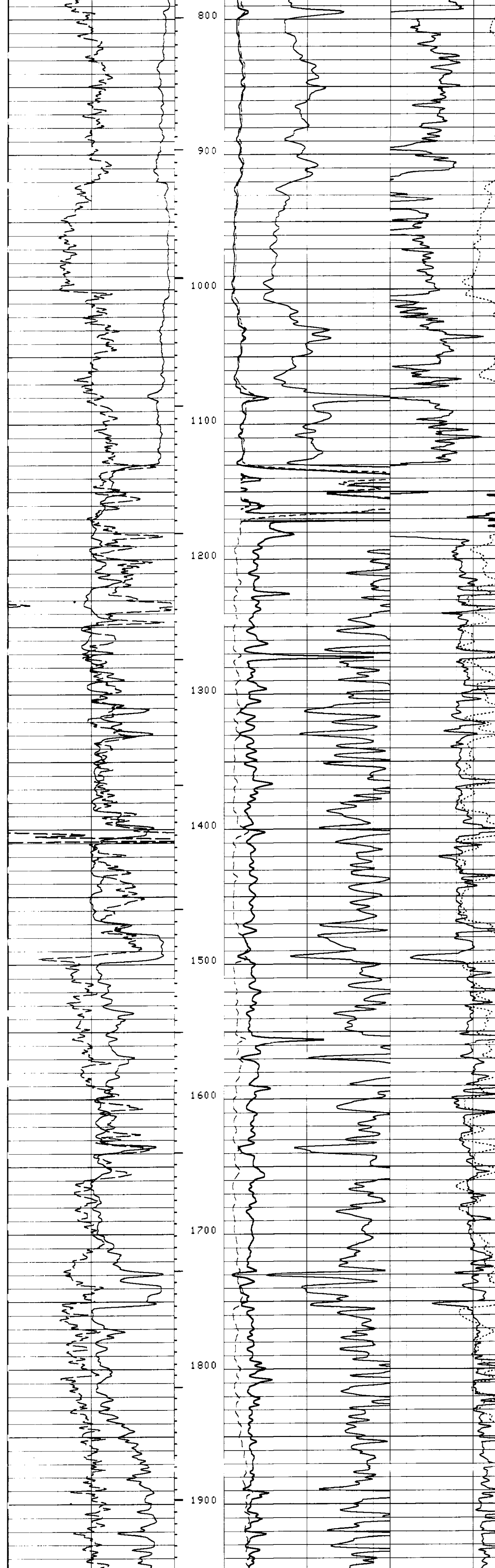
TOTAL TOOL STRING LENGTH IS 69.2 F.
 TOTAL TOOL STRING WEIGHT IS 993. LB IN AIR.

INCLINOMETRY LIST

MEAS. DEPTH	DEVI	TVD
503.0 FEET	1.50 DEG	503.0 FEET
526.0 FEET	1.50 DEG	526.0 FEET
547.0 FEET	2.50 DEG	546.9 FEET
709.0 FEET	3.00 DEG	707.9 FEET
769.0 FEET	6.00 DEG	768.7 FEET
961.0 FEET	15.00 DEG	859.1 FEET
926.0 FEET	16.00 DEG	921.7 FEET
989.0 FEET	18.00 DEG	981.0 FEET
1051.0 FEET	19.75 DEG	1040.6 FEET
1113.0 FEET	19.00 DEG	1099.1 FEET
1239.0 FEET	20.50 DEG	1216.8 FEET
1439.0 FEET	22.50 DEG	1398.2 FEET
1621.0 FEET	26.00 DEG	1569.6 FEET
1809.0 FEET	30.00 DEG	1734.7 FEET
1991.0 FEET	34.00 DEG	1814.4 FEET
2115.0 FEET	34.00 DEG	1993.8 FEET
2292.0 FEET	34.00 DEG	2140.6 FEET
2427.0 FEET	35.50 DEG	2251.5 FEET
2506.0 FEET	36.00 DEG	2399.4 FEET
2690.0 FEET	35.00 DEG	2557.1 FEET
2991.0 FEET	27.50 DEG	2734.2 FEET
3053.0 FEET	27.00 DEG	2799.3 FEET
3271.0 FEET	26.75 DEG	2989.8 FEET
3619.0 FEET	26.50 DEG	3291.6 FEET
3967.0 FEET	25.00 DEG	3626.4 FEET

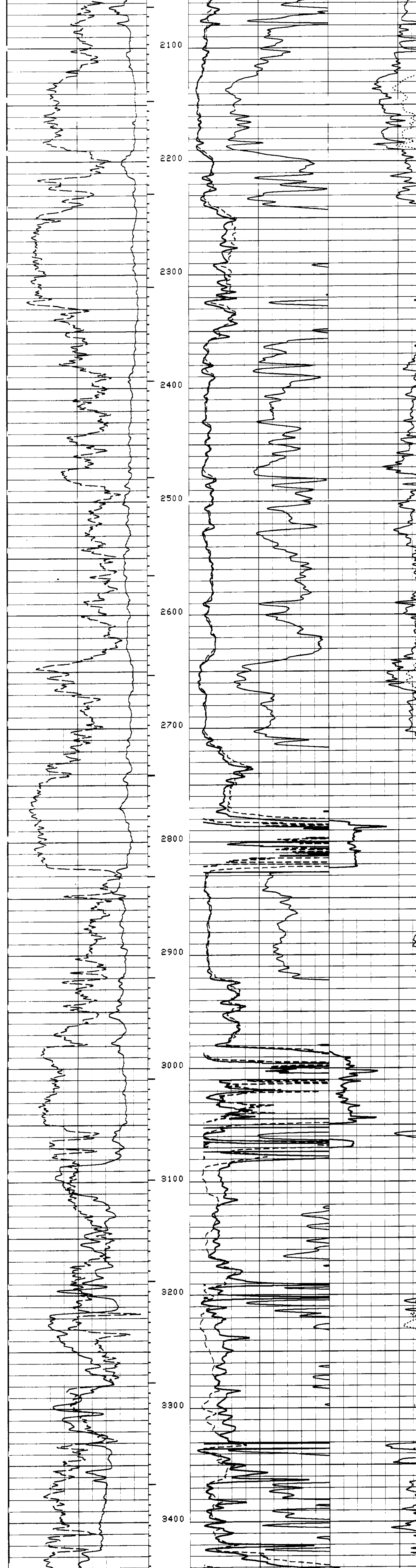
CP 38.2 FILE 15 03-AUG-1993 04:04

MAIN LOG



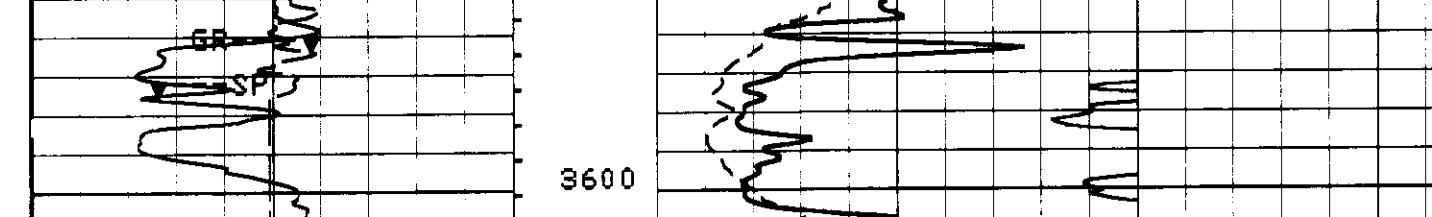
CP 38.2 FILE 16 03-AUG-1993 15:04

INPUT FILE(S) CREATION DATE 03-AUG-1993 01:32



CP 38.2 FILE 16 03-AUG-1993 14:56

INPUT FILE(S) CREATION DATE 03-AUG-1993 01:32



MCDB 31.9 FEET DT 2.5 FEET SLTG 44.1 FEET SGT 62.7 FEET DTD 9.9 FEET

PARAMETERS

PARAMETER	VALUE	UNIT
SMB - Sonic Memory Board	DISA	
VDLR - Defn not found	DISA	
TCCA - To Connection Status	DISA	
RATE - Firing Rate	15	HZ
DG - Downhole Gain	7/5	
DETE - Detection	E2	
NHSG - Near Minimum Sliding Gate	160	US
CBLG - CBL Gate Width	2	US
AMPL - Sonic Amplitude	2	
CBL - Cement Bond Log Amplitude	UT	
WFM - Waveform Mode	1	
SS - Sweep Speed	FAST	
TOD - To Delay	DISA	
DTF - Delta-T Matrix	189.000	US/F
DTM - Delta-T Matrix	56.0000	US/F
CDTS - Correction for Delta-T Matrix, Empirical	100.000	
SPFS - Sonic Porosity Formula Select	FAST	
PP - Playback Processing	DISA	
DD - Depth Offset for Logical Unit L11	0.0	F
HMUD - Weight of Mud	10.2000	LB/G
MSEC - Medium Sonda Error Correction	7.50000	MM/H
SBR - Shoulder Bed Resistivity	1.00000	OHM
DSCC - Deep Sonda Error Correction	4.40000	MM/H
FCB - Future Casing Diameter	4.50000	IN
NJCT - NGT Calibration Jig Type	GSRY	
RPMI - Resistivity Mud Filtrate	3.02000	
DACD - Digitizer Word Count	512	
DSIN - Digitizer Sample Interval	5	US
IDEL - Digitizing Delay	200	
SPVD - Start Point Vertical Depth	0.0	F
SINT - Sampling Interval for GCT Depth-Logging	10.0000	
B3 - Bit Size	7.87500	IN
DHS - Downhole Status (Down or Cased)	OPEN	

COMPANY NAHAMA & WEAGANT 80HL FR 3879.0 F

WELL "KING" LF #31-36-65 80HL TD 3886.0 F

FIELD MST Elev: KB 7845.5 F

COUNTY COLUMBIA STATE OREGON DF 7635.5 F