

# DIP LOG CALCULATIONS

COMPANY REICHHOLD ENERGY CORPORATION  
 WELL LONG VIEW FIBER 41-32  
 FIELD MIST  
 COUNTY COLUMBIA STATE OREGON  
 LOCATION 1.66 SOUTH AND 6.51 WEST OF THE NORTHEAST CORNER OF 1/4 SECTION 32 T14N R9E S5W  
 PERMANENT DATUM K.B. 081.12 Elev. 858.9  
 LOG MEASURED FROM K.B. Elev. 858.9  
 DATE 10-14-81  
 RUN NO. 2485  
 DEPTH - DRILLER 2485  
 DEPTH - WELEX 2485  
 FROM LOG INCH 439 @ 439  
 TO LOG INCH 439 @ 439  
 CURING WAYS 439 @ 439  
 BIT SIZE 6 1/4  
 TYPE FLUID IN HOLE LIGNOSULF  
 DENS. I  
 VISC. I  
 PH I  
 SOURCE OF SAMPLE I  
 R<sub>m</sub> @ MASS. TEMP. @ F  
 R<sub>m</sub> @ MASS. TEMP. @ F  
 R<sub>m</sub> @ MASS. TEMP. @ F  
 R<sub>m</sub> @ MASS. TEMP. @ F  
 R<sub>m</sub> @ BHT 1.05 @ 104 F  
 R<sub>m</sub> @ BHT 0.80 @ 104 F  
 R<sub>m</sub> @ BHT 1.17 @ 104 F

Service Ticket No. 054969

Date	Sample No.	Run No.
		1
		2
		3
		4

Change in Mud Type or Additional Samples

Depth - Driller	Depth - Welex	Tool Type	Tool Number	Pad Type	Correlated By	Computed By

Dens. Visc. PH Fluid Loss

Source of Sample

R<sub>m</sub> @ Mass. Temp. @ F

R<sub>m</sub> @ Mass. Temp. @ F

R<sub>m</sub> @ Mass. Temp. @ F

R<sub>m</sub> @ Mass. Temp. @ F

Source: R<sub>m</sub> R<sub>m</sub>

R<sub>m</sub> @ BHT 1.05 @ 104 F

R<sub>m</sub> @ BHT 0.80 @ 104 F

R<sub>m</sub> @ BHT 1.17 @ 104 F

Wexlex does not guarantee the accuracy of any interpretation of log data, conversion of log data to physical rock parameters, or recommendations which may be given by Wexlex personnel or which may appear on the log or in any other form. Any user of such data, interpretations, conversions or recommendations agrees that Wexlex is not responsible, except where due to gross negligence or willful misconduct, for any loss, damages, or expenses from the use thereof.

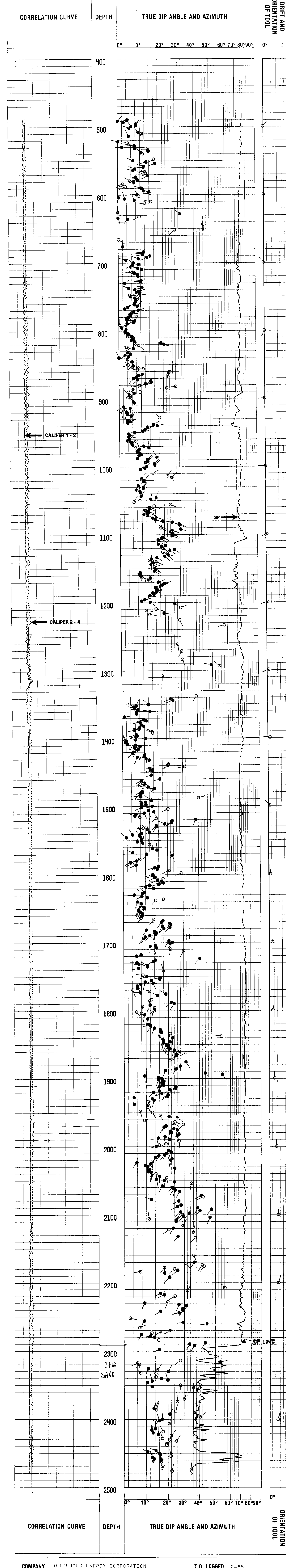
Magnetic Declination NORTH 21.5 EAST

TABLE OF CONSTANTS FOR DETERMINING VERTICAL DIFFERENCE AT VARIOUS DIP ANGLES

DIP ANGLES Degrees	CONSTANT	DIP ANGLES Degrees	CONSTANT	DIP ANGLES Degrees	CONSTANT	DIP ANGLES Degrees	CONSTANT
1	0.175	11	364	21	384	35	700
2	0.35	12	213	22	404	40	839
3	0.52	13	231	23	425	45	1000
4	0.70	14	249	24	445	50	1192
5	0.88	15	268	25	466	55	1428
6	1.05	16	287	26	487	60	1732
7	1.23	17	306	27	509	65	2144
8	1.41	18	325	28	531	70	2748
9	1.58	19	344	29	554	75	3732
10	1.76	20	364	30	577	80	5671

Vertical difference in feet is obtained by multiplying the constant for any given dip angle by the horizontal distance in feet.  
 Example: Dip angle 10°. Horizontal distance 440 ft.  
 Vertical difference = 176 x 440 = 77.44

## GRAPHIC PRESENTATION



COMPANY	REICHHOLD ENERGY CORPORATION	T.D. LOGGED	2485
WELL	LONG VIEW FIBER 41-32	T.D. DRILLER	2494
FIELD	MIST	T.D. WELEX	2487
COUNTY	COLUMBIA STATE OREGON	ELEV: K.B.	870.3
		D.F.	
		G.L.	858.9