

COMPANY: REICHHOLD ENERGY CORPORATION
 WELL: "DINGWIEB-TIEBER" 442-22
 FIELD: SOUTH RIST
 COUNTY: COLUMBIA
 STATE: OREGON
 LOCATION: SEC. 22, T14N, R6E, S14
 DATE: 16 JAN 85
 OTHER SERVICES: DLG, SMC
 PERMANENT IDENTIFICATION: 955.0
 LOG MEASURED FROM: ABOVE PERM. BOTTOM
 DRUG MEASURED FROM: KB
 ELEVATIONS: BS: 7,875.00 IN
 STYP: HSF
 MODE: 4/4
 BHS: OPEN

DEPTH: 2272.0
 DEPTH LOGGED: 2272.0
 TDP LOG INTERVAL: 438.0
 CASING-LOGGERS: 438
 CASING: 8 7/8
 BIT SIZE: 7 7/8
 BIT DEPTH: 2273

TYPE FLUID IN HOLE: GEL-LIGNO
 DENSITY: 10.6 LB/G
 VISCOSITY: 45.0 S
 PH: 8.5
 FLUID LOSS: 9.5 C3
 SOURCE OF SAMPLE: FLDLINE
 RM: 2.850 DHMM AT 63.0 DEGF
 RMF: 2.330 DHMM AT 47.0 DEGF
 RMC: 2.690 DHMM AT 47.0 DEGF
 SOURCE RMF/RMC: MEASURED/MEASURED
 RM AT BHT: 2.145 DHMM AT 86.0 DEGF
 RMF AT BHT: 1.352 DHMM AT 86.0 DEGF
 RMC AT BHT: 1.561 DHMM AT 86.0 DEGF
 TIME CIRC. STOPPED: 15:30 1-16
 TIME LOGGER ON BTH: 21:15 1-16
 MAX. REC. TEMP: 86.0 DEGF
 LOGGING UNIT NO: 9126
 LOGGING UNIT LDC: SACRAMENTO
 RECORDED BY: PILCH
 WITNESSED BY: THDNAS

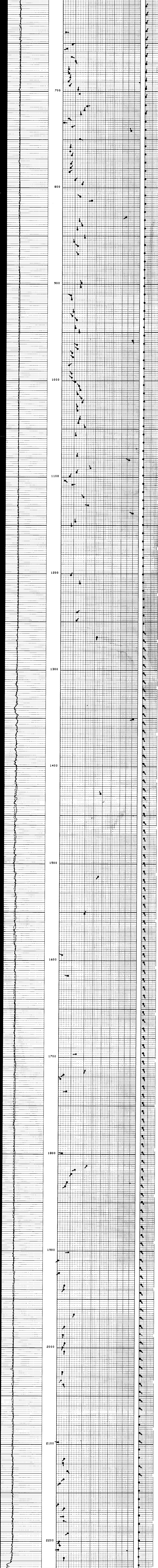
REMARKS: 500 PPM CHLORIDES
72 DEGREE MECHANICAL UNIT.
NORTH 89 DEG 4' 19" WEST 562.82 FT & NORTH
0 DEG 55' 41" EAST 260.54 FT FROM EAST 1/4 CORNER

EQUIPMENT NUMBERS-
HDS-H 727 HDE-E 721 HDM-JB 1766 DAA-A 1891

ALL INTERPRETATIONS ARE OPINIONS BASED ON INFERENCES FROM ELECTRICAL OR OTHER MEASUREMENTS AND WE CANNOT, AND DO NOT GUARANTEE THE ACCURACY OR CORRECTNESS OF ANY INTERPRETATIONS, AND WE SHALL NOT, EXCEPT IN THE CASE OF GROSS OR WILLFUL NEGLIGENCE ON OUR PART, BE LIABLE OR RESPONSIBLE FOR ANY LOSS, COSTS, DAMAGES OR EXPENSES INCURRED OR SUSTAINED BY ANYONE RESULTING FROM ANY INTERPRETATION MADE BY ANY OF OUR OFFICERS, AGENTS OR EMPLOYEES. THESE INTERPRETATIONS ARE ALSO SUBJECT TO OUR GENERAL TERMS AND CONDITIONS AS SET FORTH IN OUR CURRENT PRICE SCHEDULE.

FILE 5

0.0	PUM4(IN)	20.000	0.0	AH ()	5.0000
0.0	PUM3(IN)	20.000	0.0	PUM2(IN)	5.0000
0.0	CBS (IN)	20.000	0.0	PUM1(IN)	5.0000
0.0	CIS (IN)	20.000	0.0		



0.0	PUM4(IN)	20.000	0.0	AH ()	5.0000
0.0	PUM3(IN)	20.000	0.0	PUM2(IN)	5.0000
0.0	CBS (IN)	20.000	0.0	PUM1(IN)	5.0000
0.0	CIS (IN)	20.000	0.0		

PARAMETERS

NAME	VALUE	UNIT	NAME	VALUE	UNIT
MCT	72	DEG	BS	7,87500	IN
TCHA	49AD		STYP	HSF	
DSCA	10	F	MODE	4/4	
PP	0.0		BHS	OPEN	

TAPE NOT MADE