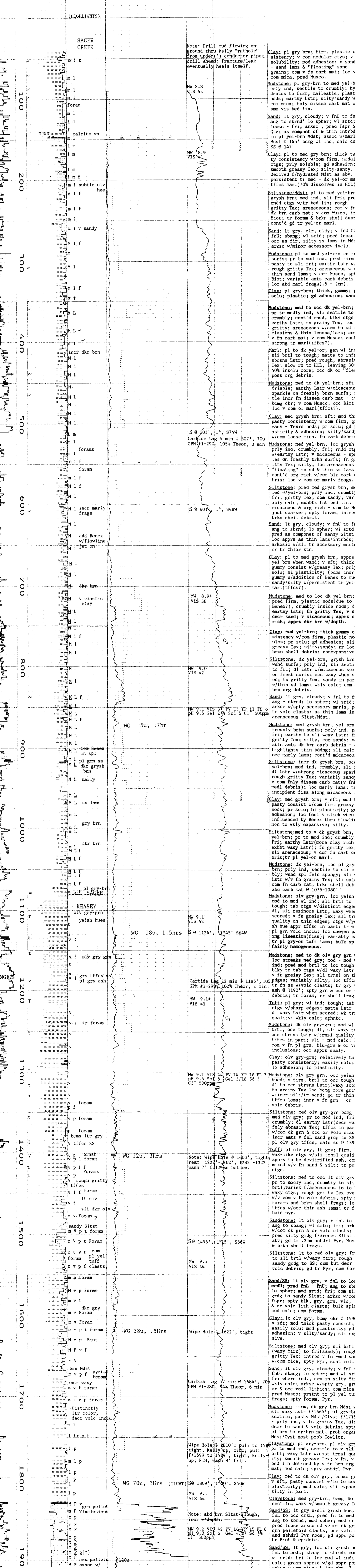


HORIZON WELL LOGGING

COMPANY: NAHAMA & WEAGANT ENERGY CO.
 WELL: "CONDOR" L.F. #43-32-65
 LOCATION: 2367'N and 1009'W from the SE corner of Section 32, T6N, R5W, W., W, M
 ELEVATION: 791' G.L. 801' K.B.
 FIELD: MIST
 COUNTY: Columbia, Oregon
 API NUMBER: 36-009-00302
 SPUD DATE: 8-24-93
 LOGGING DATES: 8-24-93 to 8-29-93
 LOGGING DEPTHS: 40' to 1909'
 GEOLOGIST: Jeff Vaughan
 COMPANY MAN: Rob Lucas
 CONTRACTOR: Taylor Drilling Inc
 RIG: 7
 LOGGING GEOLOGISTS: Dan Cross, Jim Eastes
 BIT SIZE: 14.75" to 503', 9.875" to 1909'
 CASING: 10.75" to 502'
 CALIBRATION: 2% METHANE + 100 UNITS

NOTATIONS	SYMBOLS
Rate Out	PEBBLES >2mm
After Trip	SAND
After Survey	SANDSTONE
tion Gas	SILTSTONE
Cut gas	MUDSTONE
Gas	SHALE
Gas	MARL
Gas	CLAY
Run	CHERT
	DOLOSTONE
	LIMESTONE
	VOLCANICS
	TUFF
	BASALT



1909' Circ out, strap out of hole