

Larkins 23-33



DIP LOG CALCULATIONS

COMPANY AMERICAN QUASAR PETROLEUM COMPANY
 RECEIVED: PTD
 SEP 30 1980
 FIELD LARKINS NO. 23-33
 COUNTY COLUMBIA STATE OREGON
 WELL MIST NEHALEM
 COUNTY COLUMBIA STATE OREGON

Permanent Datum G.L. Elev. 697
 Log Measured From K.B. OR 10.5 Ft. Above Perm. Datum Elev. K.B. 707.5
 Drilling Measured From K.B. D.F. - 697 G.L. - 697

Run No. 8-33-80
 Date
 Depth - Driller 2940
 Btm. Log Inter. 2918
 Top Log Inter. 518 @ 518
 Gain - Driller 518
 Gain - Welex 518

Type Fluid in Hole LIQUID SULF.
 Dens. - Visc. 9.6 138
 pH Fluid Loss 10.5 18.8 ml
 Source of Sample CIRCULATED
 Rm @ Meas. Temp. 1.00 @ 68 °F
 Rmf @ Meas. Temp. 2.00 @ 70 °F
 Rmc @ Meas. Temp. 1.00 @ 70 °F
 Source: Rmt Rmc
 Rm @ BHT 1.24 @ 104 °F
 Rmf @ BHT 1.34 @ 104 °F
 Rmc @ BHT 0.84 @ 104 °F

Service Ticket No. 055213

Date	Sample No.	Run No.	Tool Type	Tool Number	Pad Type	Correlated By	Computed By
	1	1	DIP				
		2					
		3					
		4					

Remarks:
 Change in Mud Type or Additional Samples

Date	Sample No.	Run No.	Tool Type	Tool Number	Pad Type	Correlated By	Computed By
	1	1	DIP				
		2					
		3					
		4					

Remarks:
 Dens. - Visc. - pH Fluid Loss - Source of Sample - Rm @ Meas. Temp. - Rmf @ Meas. Temp. - Rmc @ Meas. Temp. - Source: Rmt Rmc - Rm @ BHT - Rmf @ BHT - Rmc @ BHT

Welex does not guarantee the accuracy of any interpretation of log data, conversion of log data to physical rock parameters, or recommendations which may be given by Welex personnel or which may appear on the log or in any other form. Any user of such data, interpretations, conversions, or recommendations agrees that Welex is not responsible, except where due to gross negligence or willful misconduct, for any loss, damages, or expenses from the use thereof.

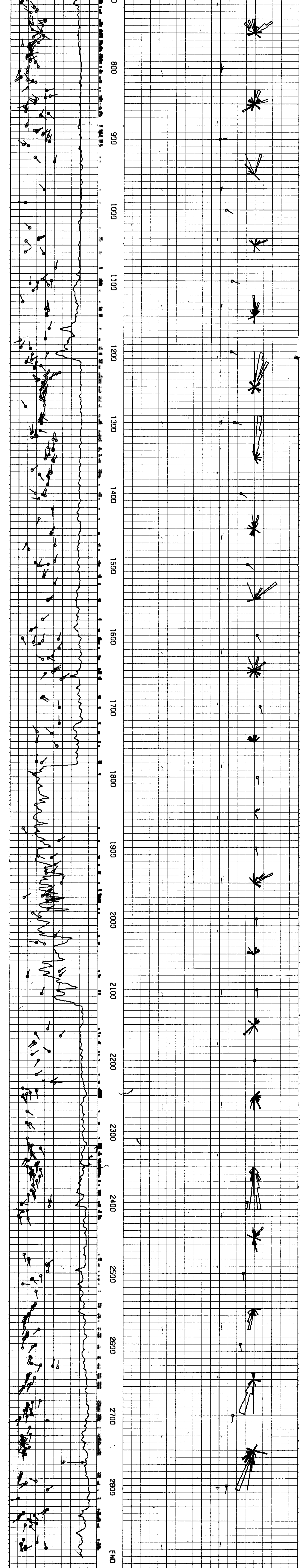
Magnetic Declination NORTH 21° EAST

TABLE OF CONSTANTS FOR DETERMINING VERTICAL DIFFERENCE AT VARIOUS DIP ANGLES

DIP ANGLES	CONSTANT	DIP ANGLES	CONSTANT	DIP ANGLES	CONSTANT	DIP ANGLES	CONSTANT
Degrees		Degrees		Degrees		Degrees	
1	.0175	11	.194	21	.384	35	.700
2	.035	12	.213	22	.404	40	.839
3	.052	13	.231	23	.425	45	1.000
4	.070	14	.249	24	.445	50	1.192
5	.088	15	.268	25	.466	55	1.428
6	.105	16	.287	26	.487	60	1.732
7	.123	17	.306	27	.509	65	2.144
8	.141	18	.325	28	.531	70	2.748
9	.158	19	.344	29	.554	75	3.732
10	.176	20	.364	30	.577	80	5.671

Vertical difference in feet is obtained by multiplying the constant for any given dip angle by the horizontal distance in feet.
 Example: Dip angle 10°, Horizontal distance 440 ft.
 Vertical difference = .176 x 440 = 77.44

GRAPHIC PRESENTATION



AMERICAN QUASAR PETROLEUM COMPANY
 LARKINS NO. 23-33
 MIST NEHALEM
 COLUMBIA COUNTY, OREGON

T.D. LOGGED 2916
 T.D. DRILLER 2940
 T.D. WELEX 2918
 ELEV: KB 707.5 6L 697