



**INDUCTION - ELECTRIC LOG**

COMPANY REICHHOLD ENERGY CORPORATION  
 WELL LABEL NO. 2  
 FIELD NEHALEM BASIN  
 COUNTY COLUMBIA STATE OREGON  
 Location N/A  
 ( W. B. & M. )  
 C/V/L  
 D/P

Permanent Datum G.L. 519.82 Elev. KB 530.32  
 Log Measured From K.B. 0R 10.5 Ft. Above Perm. Datum D.F. 519.82  
 Drilling Measured From K.B. 0R  
 Date 9-26-79  
 Run No. 0NE  
 Depth-Driller 2857  
 Depth-Welex 2840  
 Btm. Log Inter. 2834  
 Top Log Inter. 398  
 Casing-Driller 398  
 Casing-Welex 398

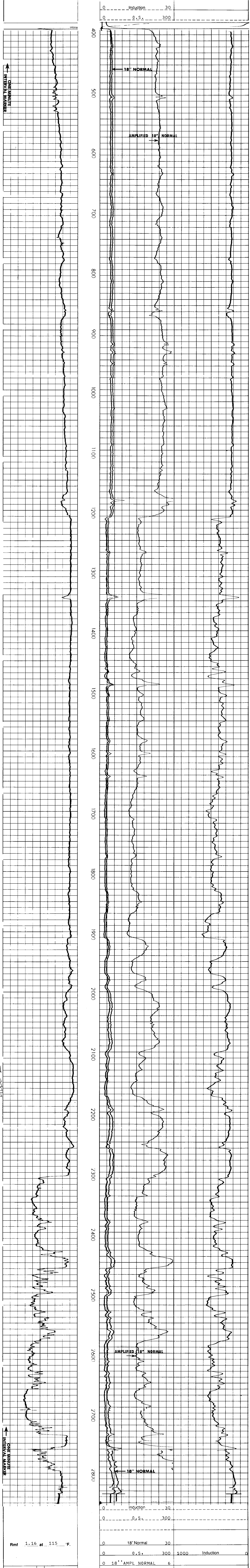
Bit Size 6 1/4  
 Type Fluid in Hole LIGNO-SULF  
 Dens. Visc. 77 1.38  
 pH Fluid Loss 10.5 13.7 ml  
 Source of Sample PITT  
 F<sub>10</sub>@ Meas. Temp. 1.90 @ 77°F  
 F<sub>20</sub>@ Meas. Temp. 1.86 @ 72°F  
 F<sub>30</sub>@ Meas. Temp. 2.40 @ 66°F  
 Source R<sub>10</sub> R<sub>20</sub> R<sub>30</sub>  
 MEASURED  
 F<sub>10</sub>@ BHT 1.27 @ 115°F  
 F<sub>20</sub>@ BHT 1.15 @ BHT  
 F<sub>30</sub>@ BHT 1.37 @ 115°F  
 Max. Rec. Temp. 115°F @ BHT  
 Equip. Location 9430 I WDLND  
 Recorded By KENNEDY  
 Witnessed By FRY, BRUER, CLARE

Service Ticket No 048898 Remarks

Change in Mud Type or Additional Samples	Type Log	Depth	Scale Up Hole	Scale Down Hole
Date   Sample No.				
Depth-Driller				
Type Fluid in Hole				
Dens.   Visc.				
pH   Fluid Loss				
Source of Sample				
R <sub>10</sub> @ Meas. Temp.	@	°F		
R <sub>20</sub> @ Meas. Temp.	@	°F		
R <sub>30</sub> @ Meas. Temp.	@	°F		
Source: R <sub>10</sub>   R <sub>20</sub>   R <sub>30</sub>				
R <sub>10</sub> @ BHT		1.27 @ 115°F		
R <sub>20</sub> @ BHT		1.16 @ 115°F		
R <sub>30</sub> @ BHT		1.37 @ 115°F		

Welex does not guarantee the accuracy of any interpretation of log data, conversion of log data to physical rock parameters, or recommendations which may be given by Welex personnel or which may appear on the log or in any other form. Any user of such data interpretations, conversions, or recommendations agrees that Welex is not responsible, except where due to gross negligence or willful misconduct, for any loss, damages, or expenses resulting from the use thereof.

2" = 100'



POTENTIAL MILLIVOLTS	RESISTIVITY OHMS M <sup>2</sup> /M	CONDUCTIVITY M MHOS/M
0 10 +	0 18" Normal 30	0 1000 Induction
	0 0.S. 300	
	0 18" AMPL NORMAL 6	
	0 Induction 30	
	0 0.S. 300	

REICHHOLD  
 074470  
 387