

COMPANY: REICHHOLD ENERGY CORPORATION

WELL: LIBEL #12-14

RECEIVED PTD

FIELD: MIST

COUNTY: COLUMBIA

STATE: OREGON

LOCATION: 1819' SOUTH OF NORTH LINE

SEC: 14

EAST OF WEST LINE

TWP: 6N

RGE: 5W, W&M

PERMANENT DATUM: GL

ELEV. OF PERM. DATUM: 525.7'

LOG MEASURED FROM: KB

DRLG. MEASURED FROM: KB

DATE: 21 OCT 1982

RUN NO: 1

DEPTH-DRILLER: 2681.0'

DEPTH-LOGGER: 2680.0'

BTM. LOG INTERVAL: 2642.0'

TOP LOG INTERVAL: 419.0'

CASING-DRILLER: 417'

CASING-LOGGER: 7"

BIT SIZE: 6 1/4"

OTHER SERVICES-

BHC

HDT

PROGRAM

TAPE NO:

SERV: 28.4

ORDER NO:

303821

TYPE FLUID IN HOLE: GEL/LIGNO
 DENSITY: 10.2 LB/G
 VISCOSITY: 51.0 S
 PH: 9.5
 FLUID LOSS: 4.8 C3
 SOURCE OF SAMPLE: FLOWLINE
 RM: 1.900 OHMM AT 75.0 DEGF
 RMF: 1.970 OHMM AT 63.0 DEGF
 RMC: 2.010 OHMM AT 61.0 DEGF
 SOURCE RMF/RMC: MEASURED/MEASURED
 RM AT BHT: 1.154 OHMM AT 128. DEGF
 RMF AT BHT: 1.021 OHMM AT 128. DEGF
 RMC AT BHT: 1.012 OHMM AT 128. DEGF

TIME CIRC. STOPPED: 0100
 TIME LOGGER ON BTM.: 0320

MAX. REC. TEMP: 128.0 DEGF

LOGGING UNIT NO: 8126
 LOGGING UNIT LOC: SACRAMENTO

RECORDED BY: COLLINS
 WITNESSED BY: ALGER

REMARKS:

EQUIPMENT NUMBERS-

SL5 375 SLC 1321 MCD 1237 SLM 131

ALL INTERPRETATIONS ARE OPINIONS BASED ON INFERENCES FROM ELECTRICAL OR OTHER MEASUREMENTS AND WE CANNOT, AND DO NOT GUARANTEE THE ACCURACY OR CORRECTNESS OF ANY INTERPRETATIONS, AND WE SHALL NOT, EXCEPT IN THE CASE OF GROSS OR WILLFUL NEGLIGENCE ON OUR PART, BE LIABLE OR RESPONSIBLE FOR ANY LOSS, COSTS, DAMAGES OR EXPENSES INCURRED OR SUSTAINED BY ANYONE RESULTING FROM ANY INTERPRETATION MADE BY ANY OF OUR OFFICERS, AGENTS OR EMPLOYEES. THESE INTERPRETATIONS ARE ALSO SUBJECT TO OUR GENERAL TERMS AND CONDITIONS AS SET OUT IN OUR CURRENT PRICE SCHEDULE.

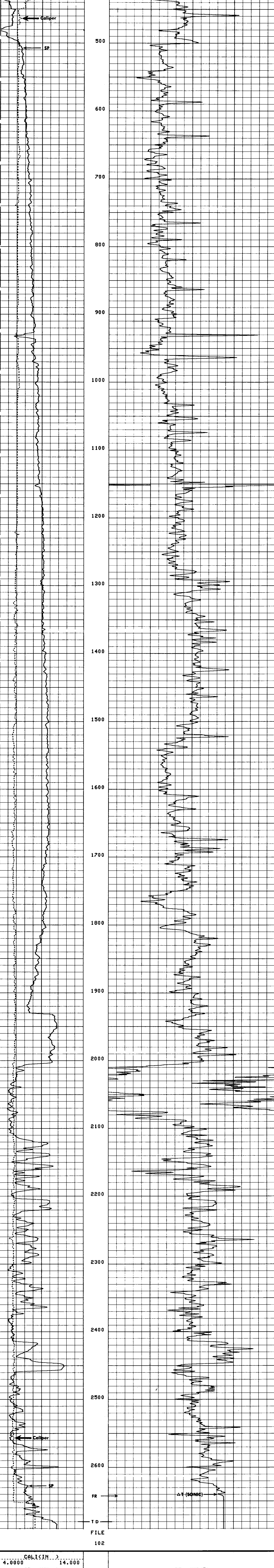
FILE

103

| | | | | | |
|----------|--------|---------|-----------|--------|--------|
| CAL (IN) | 4.0000 | 14.0000 | DT (US/F) | 175.00 | 75.000 |
| SP (MV) | -100.0 | 0.0 | | | |

FILE

102



| | | | | | |
|----------|--------|---------|-----------|--------|--------|
| CAL (IN) | 4.0000 | 14.0000 | DT (US/F) | 175.00 | 75.000 |
| SP (MV) | -100.0 | 0.0 | | | |

SENSOR MEASURE POINT TO TENSION REFERENCE POINT

| | |
|----------------|---------------|
| AMPL 41.4 FEET | DT 38.9 FEET |
| SRAT 38.9 FEET | CBL 41.4 FEET |
| CALI 29.3 FEET | TT 41.4 FEET |
| SFL 3.9 FEET | ILD 6.9 FEET |
| SP .0 FEET | ILM 3.3 FEET |
| TENS .0 FEET | SPAR .0 FEET |
| NDIS 33.2 FEET | |

PARAMETERS

| NAME | VALUE | UNIT | NAME | VALUE | UNIT |
|------|---------|------|------|---------|------|
| CDS | 100.000 | | BS | 6.25000 | IN |
| DTF | 189.000 | US/F | BTM | 56.0000 | US/F |
| SRF | 1.00000 | OHMM | DSEC | 4.10000 | MMHD |
| FPHI | SPHI | | MSEC | 11.6000 | MMHD |
| DO | 0.0 | F | BHS | OPEN | |

COMPANY: REICHHOLD ENERGY CORPORATION

WELL: LIBEL #12-14

FIELD: MIST

COUNTY: COLUMBIA STATE: OREGON

SCHL. FR 2642.0'

SCHL. TD 2680.0'

DRLR. TD 2681.0'

Elev: KB 537.1'

DF N/A

GL 525.7'