

| | | | |
|-----------------------|---------------------------------|-----------------------|---------------------------|
| COMPANY | Nahama & Weagant Energy Company | WELL | "Kokenee" Label #32-15-65 |
| FIELD | Mist | COUNTY | Columbia |
| STATE | Oregon | Other Services: | |
| LOCATION | 1425 and 118th | LOGGING MEASURED FROM | 11.0 F above Perm. Datum |
| DATE | 19-NOV-1993 | PERMITS | 11.0 F |
| LOGGING MEASURED FROM | 11.0 F | API SERIAL NO. | 96-009-00318 |
| PERMITS | 11.0 F | API SERIAL NO. | 96-009-00318 |
| DATE | 19-NOV-1993 | API SERIAL NO. | 96-009-00318 |
| LOGGING MEASURED FROM | 11.0 F | API SERIAL NO. | 96-009-00318 |
| PERMITS | 11.0 F | API SERIAL NO. | 96-009-00318 |
| DATE | 19-NOV-1993 | API SERIAL NO. | 96-009-00318 |
| LOGGING MEASURED FROM | 11.0 F | API SERIAL NO. | 96-009-00318 |
| PERMITS | 11.0 F | API SERIAL NO. | 96-009-00318 |
| DATE | 19-NOV-1993 | API SERIAL NO. | 96-009-00318 |
| LOGGING MEASURED FROM | 11.0 F | API SERIAL NO. | 96-009-00318 |
| PERMITS | 11.0 F | API SERIAL NO. | 96-009-00318 |
| DATE | 19-NOV-1993 | API SERIAL NO. | 96-009-00318 |
| LOGGING MEASURED FROM | 11.0 F | API SERIAL NO. | 96-009-00318 |
| PERMITS | 11.0 F | API SERIAL NO. | 96-009-00318 |
| DATE | 19-NOV-1993 | API SERIAL NO. | 96-009-00318 |
| LOGGING MEASURED FROM | 11.0 F | API SERIAL NO. | 96-009-00318 |
| PERMITS | 11.0 F | API SERIAL NO. | 96-009-00318 |
| DATE | 19-NOV-1993 | API SERIAL NO. | 96-009-00318 |
| LOGGING MEASURED FROM | 11.0 F | API SERIAL NO. | 96-009-00318 |
| PERMITS | 11.0 F | API SERIAL NO. | 96-009-00318 |
| DATE | 19-NOV-1993 | API SERIAL NO. | 96-009-00318 |
| LOGGING MEASURED FROM | 11.0 F | API SERIAL NO. | 96-009-00318 |
| PERMITS | 11.0 F | API SERIAL NO. | 96-009-00318 |
| DATE | 19-NOV-1993 | API SERIAL NO. | 96-009-00318 |
| LOGGING MEASURED FROM | 11.0 F | API SERIAL NO. | 96-009-00318 |
| PERMITS | 11.0 F | API SERIAL NO. | 96-009-00318 |
| DATE | 19-NOV-1993 | API SERIAL NO. | 96-009-00318 |
| LOGGING MEASURED FROM | 11.0 F | API SERIAL NO. | 96-009-00318 |
| PERMITS | 11.0 F | API SERIAL NO. | 96-009-00318 |
| DATE | 19-NOV-1993 | API SERIAL NO. | 96-009-00318 |
| LOGGING MEASURED FROM | 11.0 F | API SERIAL NO. | 96-009-00318 |
| PERMITS | 11.0 F | API SERIAL NO. | 96-009-00318 |
| DATE | 19-NOV-1993 | API SERIAL NO. | 96-009-00318 |
| LOGGING MEASURED FROM | 11.0 F | API SERIAL NO. | 96-009-00318 |
| PERMITS | 11.0 F | API SERIAL NO. | 96-009-00318 |
| DATE | 19-NOV-1993 | API SERIAL NO. | 96-009-00318 |
| LOGGING MEASURED FROM | 11.0 F | API SERIAL NO. | 96-009-00318 |
| PERMITS | 11.0 F | API SERIAL NO. | 96-009-00318 |
| DATE | 19-NOV-1993 | API SERIAL NO. | 96-009-00318 |
| LOGGING MEASURED FROM | 11.0 F | API SERIAL NO. | 96-009-00318 |
| PERMITS | 11.0 F | API SERIAL NO. | 96-009-00318 |
| DATE | 19-NOV-1993 | API SERIAL NO. | 96-009-00318 |
| LOGGING MEASURED FROM | 11.0 F | API SERIAL NO. | 96-009-00318 |
| PERMITS | 11.0 F | API SERIAL NO. | 96-009-00318 |
| DATE | 19-NOV-1993 | API SERIAL NO. | 96-009-00318 |
| LOGGING MEASURED FROM | 11.0 F | API SERIAL NO. | 96-009-00318 |
| PERMITS | 11.0 F | API SERIAL NO. | 96-009-00318 |
| DATE | 19-NOV-1993 | API SERIAL NO. | 96-009-00318 |
| LOGGING MEASURED FROM | 11.0 F | API SERIAL NO. | 96-009-00318 |
| PERMITS | 11.0 F | API SERIAL NO. | 96-009-00318 |
| DATE | 19-NOV-1993 | API SERIAL NO. | 96-009-00318 |
| LOGGING MEASURED FROM | 11.0 F | API SERIAL NO. | 96-009-00318 |
| PERMITS | 11.0 F | API SERIAL NO. | 96-009-00318 |
| DATE | 19-NOV-1993 | API SERIAL NO. | 96-009-00318 |
| LOGGING MEASURED FROM | 11.0 F | API SERIAL NO. | 96-009-00318 |
| PERMITS | 11.0 F | API SERIAL NO. | 96-009-00318 |
| DATE | 19-NOV-1993 | API SERIAL NO. | 96-009-00318 |
| LOGGING MEASURED FROM | 11.0 F | API SERIAL NO. | 96-009-00318 |
| PERMITS | 11.0 F | API SERIAL NO. | 96-009-00318 |
| DATE | 19-NOV-1993 | API SERIAL NO. | 96-009-00318 |
| LOGGING MEASURED FROM | 11.0 F | API SERIAL NO. | 96-009-00318 |
| PERMITS | 11.0 F | API SERIAL NO. | 96-009-00318 |
| DATE | 19-NOV-1993 | API SERIAL NO. | 96-009-00318 |
| LOGGING MEASURED FROM | 11.0 F | API SERIAL NO. | 96-009-00318 |
| PERMITS | 11.0 F | API SERIAL NO. | 96-009-00318 |
| DATE | 19-NOV-1993 | API SERIAL NO. | 96-009-00318 |
| LOGGING MEASURED FROM | 11.0 F | API SERIAL NO. | 96-009-00318 |
| PERMITS | 11.0 F | API SERIAL NO. | 96-009-00318 |
| DATE | 19-NOV-1993 | API SERIAL NO. | 96-009-00318 |
| LOGGING MEASURED FROM | 11.0 F | API SERIAL NO. | 96-009-00318 |
| PERMITS | 11.0 F | API SERIAL NO. | 96-009-00318 |
| DATE | 19-NOV-1993 | API SERIAL NO. | 96-009-00318 |
| LOGGING MEASURED FROM | 11.0 F | API SERIAL NO. | 96-009-00318 |
| PERMITS | 11.0 F | API SERIAL NO. | 96-009-00318 |
| DATE | 19-NOV-1993 | API SERIAL NO. | 96-009-00318 |
| LOGGING MEASURED FROM | 11.0 F | API SERIAL NO. | 96-009-00318 |
| PERMITS | 11.0 F | API SERIAL NO. | 96-009-00318 |
| DATE | 19-NOV-1993 | API SERIAL NO. | 96-009-00318 |
| LOGGING MEASURED FROM | 11.0 F | API SERIAL NO. | 96-009-00318 |
| PERMITS | 11.0 F | API SERIAL NO. | 96-009-00318 |
| DATE | 19-NOV-1993 | API SERIAL NO. | 96-009-00318 |
| LOGGING MEASURED FROM | 11.0 F | API SERIAL NO. | 96-009-00318 |
| PERMITS | 11.0 F | API SERIAL NO. | 96-009-00318 |
| DATE | 19-NOV-1993 | API SERIAL NO. | 96-009-00318 |
| LOGGING MEASURED FROM | 11.0 F | API SERIAL NO. | 96-009-00318 |
| PERMITS | 11.0 F | API SERIAL NO. | |

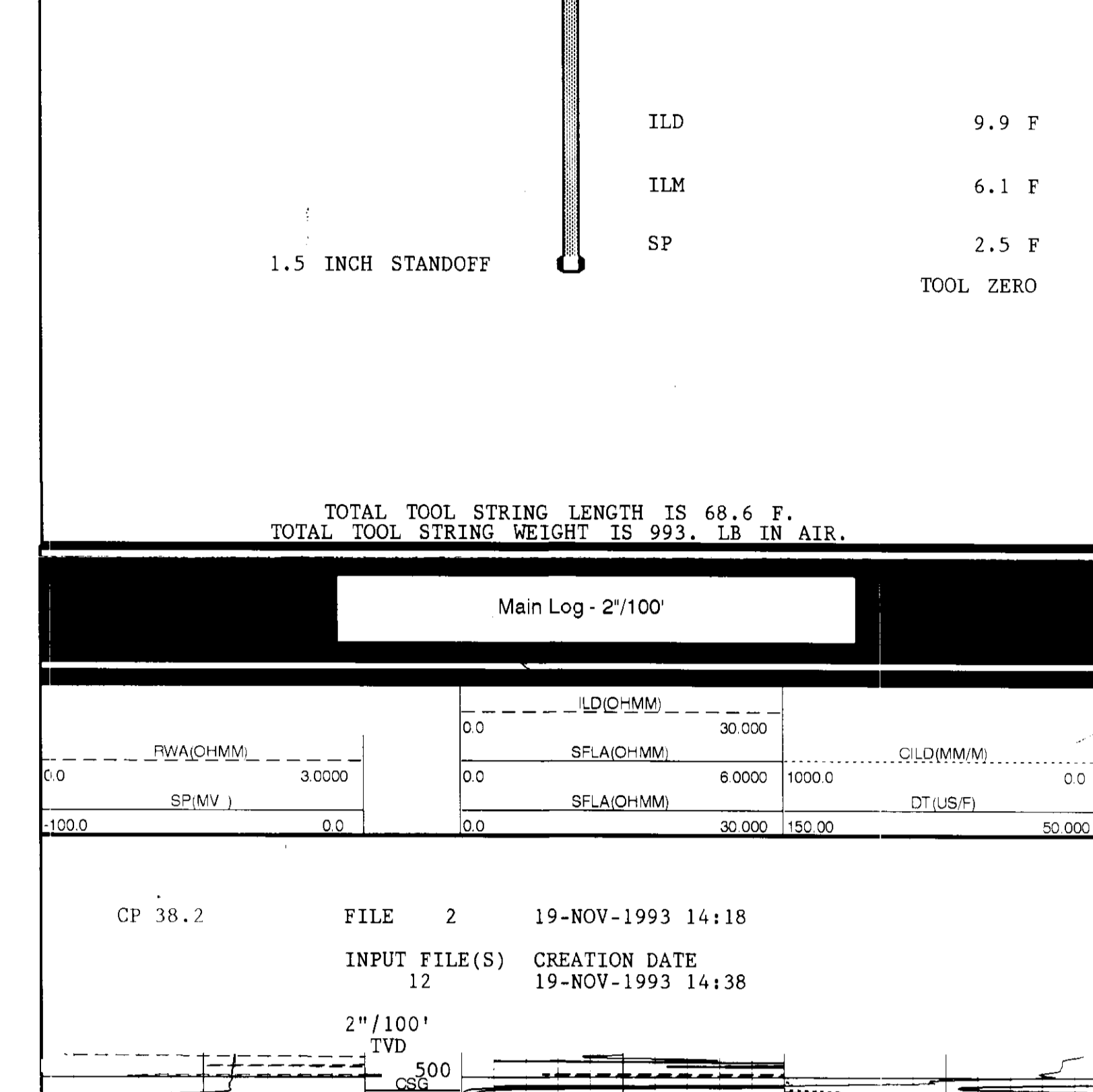
A: Measurements are not based on... references for electrical or other measurements and we warrant and do not guarantee the accuracy or correctness of any interpretations and we shall not be liable for any loss of or damage to or any other property or persons or any other costs damages or expenses incurred or sustained or any other loss or damage from any interpretations made by any of our officers agents or employees. These interpretations are also subject to Clause 4 of our General Terms and Conditions as set out in our current Price Schedule.

| | |
|----------------------|------------------------|
| Run No. | ONE |
| Service Order No. | 624472 |
| Drilling Fluid Level | 5.0 F |
| Salinity | 720 PPM |
| Rmf @ BHT | 1.654 OHMM @ 95.0 DEGF |
| Rmc @ BHT | 1.412 OHMM @ 95.0 DEGF |
| Logging Speed | 3600 F/HR |

| EQUIPMENT DATA | |
|----------------|-------------|
| Tool Number 1 | DS-EC 1386 |
| Tool Number 2 | DG-DA 1342 |
| Tool Number 3 | MCD-DA 1237 |
| Tool Number 4 | SLS-WC 388 |
| Tool Number 5 | SLS-MA 114 |
| Tool Number 6 | SGC-IC 3204 |
| Tool Number 7 | LEM-BD 354 |
| Tool Number 8 | SLM-DA 428 |
| Tool Number 9 | NLM-BC 207 |
| Tool Number 10 | |
| Tool Number 11 | |
| Tool Number 12 | |

REMARKS:

LOGGING TOOL STRING SKETCH

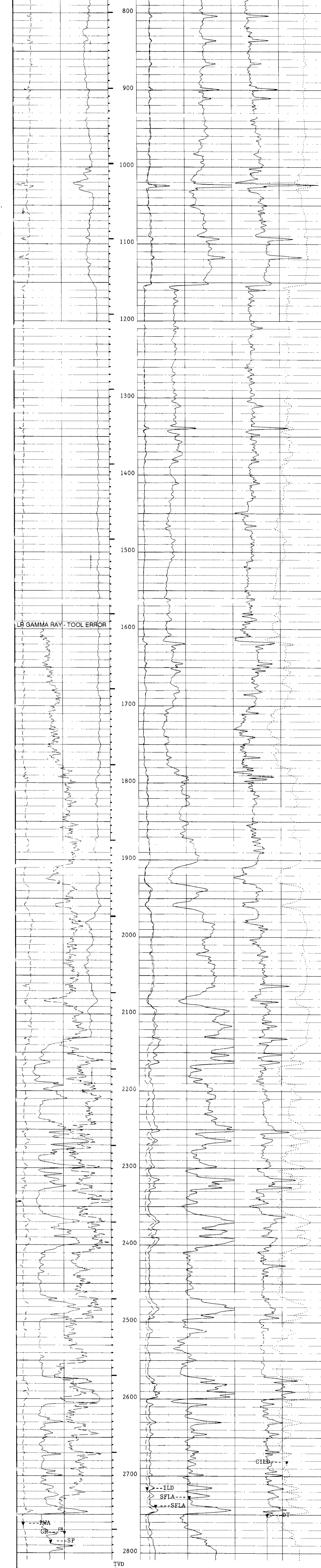


TOTAL TOOL STRING LENGTH IS 68.6 F.
TOTAL TOOL STRING WEIGHT IS 993.0 LB IN AIR.

Main Log - 2"/100'

| | | | | | |
|-----------|-----|------------|--------|-----------|-----|
| FWA(OHMM) | 0.0 | LD(OHMM) | 30.000 | CILD(MMM) | 0.0 |
| SP(MV) | 0.0 | SFLA(OHMM) | 6.0000 | DT(US/F) | 0.0 |
| | | SFLA(OHMM) | 30.000 | | |

CP 38.2 FILE 2 19-NOV-1993 14:18
INPUT FILE(S) 12 CREATION DATE 19-NOV-1993 14:38



CP 38.2 FILE 2 19-NOV-1993 14:12
INPUT FILE(S) 12 CREATION DATE 19-NOV-1993 14:38

| | | | | | |
|------------|-----|------------|--------|-----------|-----|
| FWA(OHMM) | 0.0 | LD(OHMM) | 30.000 | CILD(MMM) | 0.0 |
| GR(SI/GPI) | 0.0 | SFLA(OHMM) | 6.0000 | DT(US/F) | 0.0 |
| SP(MV) | 0.0 | SFLA(OHMM) | 30.000 | | |

SENSOR MEASURE POINT TO TOOL ZERO

| | |
|----------------|----------------|
| MCDB 31.9 FEET | SGTE 62.7 FEET |
| DIID 28.9 FEET | ILD 9.9 FEET |
| SLTQ 44.1 FEET | |

PARAMETERS

| PARAMETER | VALUE | UNIT |
|--|----------|------|
| SMB - Sonic Memory Board | DISA | |
| VDLR - Defn not found | 2IN | |
| TOCA - TO Correction Status | DISA | |
| RATE - Firing Rate | 15 | HZ |
| DG - Downhole Gain | /5 | |
| DETE - Detection | EZ | |
| NMSG - Near Minimum Sliding Gate | 180 | US |
| CBLG - CBI Gate Width | 35 | US |
| AMPL - Sonic Amplitude | 2 | |
| CBL - Cement Bond Log Amplitude | UT | |
| WFM - Waveform Mode | 1 | |
| SS - Sweep Speed | FAST | |
| TD - TO Delay | 100.0000 | US/F |
| DTM - Delta-T Fluid | 56.0000 | US/F |
| DIF - Delta-T Matrix | 100.0000 | |
| CDIS - Correction for Delta-T Shale, Empirical | 100.0000 | |
| SPFS - Sonic Porosity Formula Select | NORM | |
| PP - Playback Processing | 0.0 | F |
| DO - Depth Offset for Logical Unit LII | 9.80000 | LB/G |
| WMUD - Weight of Mud | 7.60000 | MM/M |
| MSEC - Medium Sonde Error Correction | 1.00000 | OHMM |
| SBR - Shoulder Bed Resistivity | 6.20000 | MM/M |
| DSEC - Deep Sonde Error Correction | 4.50000 | IN |
| FCD - Future Casing Diameter | 0.0 | |
| NCIT - NCT Calibration Jig Type | GSRY | |
| EPHI - Formation Factor Formula Porosity | SPHI | |
| DWCO - Digitizer Word Count | 512 | |
| DSIN - Digitizer Sample Interval | 5 | US |
| DDLE - Digitizing Delay | 200 | US |
| SPVD - Start Point Vertical Depth | 0.0 | F |
| SPWT - Sampling Interval for GCT Depth-Logging Tap | 7.87500 | M |
| BHS - BoreHole Status (Open or Cased) | OPEN | IN |

INCLINOMETRY LIST

| | | | |
|-----------|---------------------------|------------------|-------------------|
| TIE DEPTH | MEAS. DEPTH = 505.0 FEET | DEVI = .50 DEG | TVD = 505.0 FEET |
| | MEAS. DEPTH = 650.0 FEET | DEVI = 1.25 DEG | TVD = 650.0 FEET |
| | MEAS. DEPTH = 710.0 FEET | DEVI = 1.25 DEG | TVD = 710.0 FEET |
| | MEAS. DEPTH = 834.0 FEET | DEVI = 11.50 DEG | TVD = 834.0 FEET |
| | MEAS. DEPTH = 896.0 FEET | DEVI = 11.50 DEG | TVD = 894.5 FEET |
| | MEAS. DEPTH = 1053.0 FEET | DEVI = 12.25 DEG | TVD = 1048.1 FEET |
| | MEAS. DEPTH = 1147.0 FEET | DEVI = 13.00 DEG | TVD = 1139.9 FEET |
| | MEAS. DEPTH = 1272.0 FEET | DEVI = 13.75 DEG | TVD = 1261.9 FEET |
| | MEAS. DEPTH = 1458.0 FEET | DEVI = 13.75 DEG | TVD = 1442.8 FEET |
| | MEAS. DEPTH = 1582.0 FEET | DEVI = 11.25 DEG | TVD = 1563.3 FEET |
| | MEAS. DEPTH = 1676.0 FEET | DEVI = 11.25 DEG | TVD = 1655.0 FEET |
| | MEAS. DEPTH = 1830.0 FEET | DEVI = 10.00 DEG | TVD = 1848.3 FEET |
| | MEAS. DEPTH = 1873.0 FEET | DEVI = 7.75 DEG | TVD = 2021.2 FEET |
| | MEAS. DEPTH = 2048.0 FEET | DEVI = 2.75 DEG | TVD = 2804.6 FEET |
| | MEAS. DEPTH = 2835.0 FEET | | |

CP 38.2 FILE 1 19-NOV-1993 13:51

| | | | |
|---------|---------------------------------|---------|------------|
| COMPANY | Nahama & Weagant Energy Company | SCHL FR | 2826.0 F |
| WELL | "Kokenee" Label #32-15-65 | SCHL TD | 2832.0 F |
| FIELD | Mist | DRLR TD | 2835.0 F |
| COUNTY | Columbia | Elev: | KB 536.0 F |
| | | DF | 535.0 F |
| | | GL | 525.0 F |