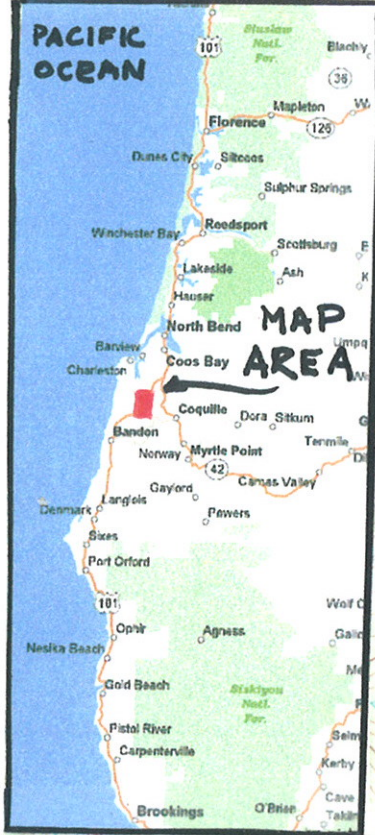


COOS COUNTY

FOREST



TO COOS BAY



TO CHARLESTON

MEC RADIO HILL NOS. 1-5

TO COQUILLE

TO BANDON

1 Mile

RECEIVED
SEP 6 2005

7275

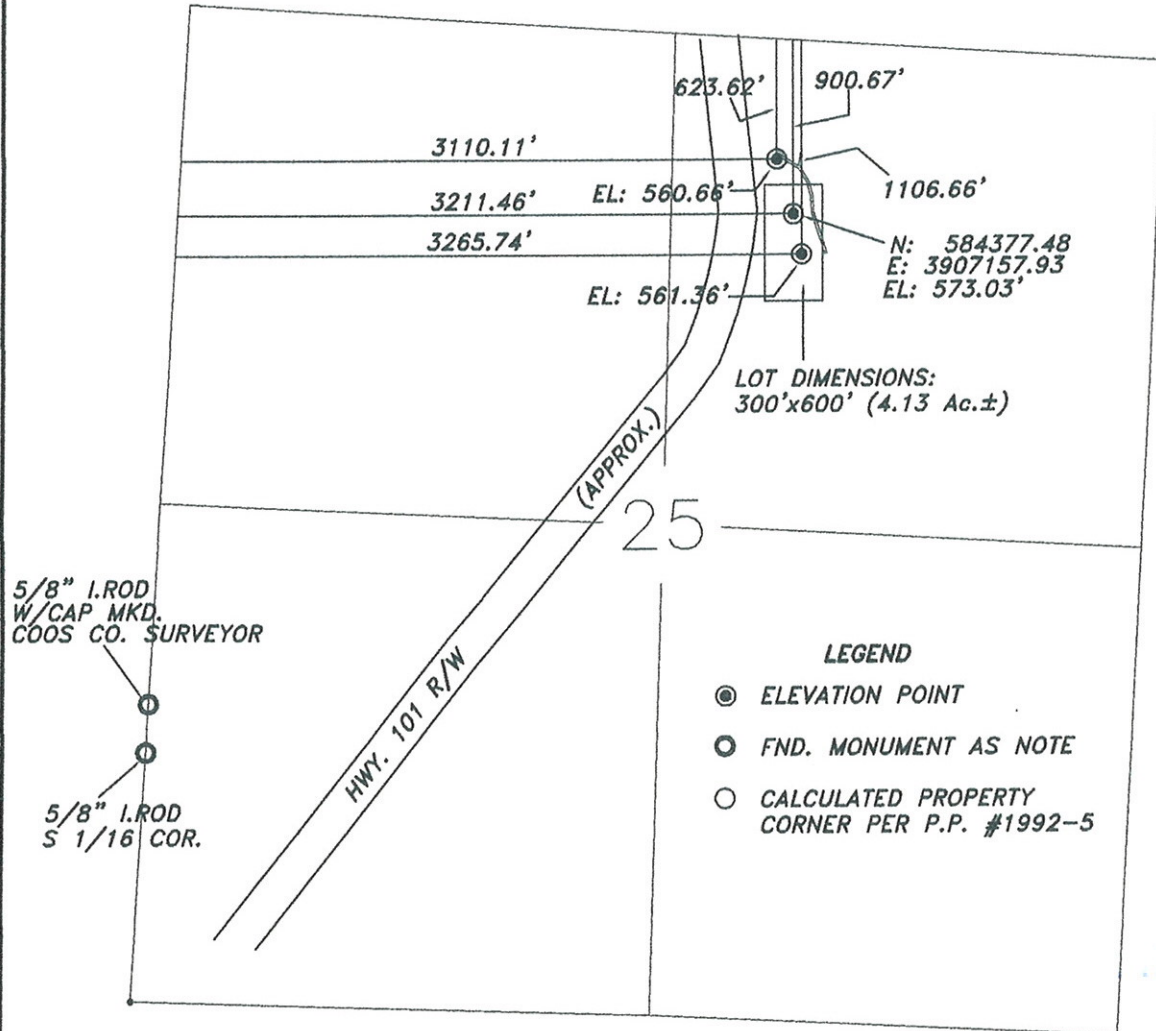
7285

R14 W R13 W



MEC RADIO TOWER HILL PRELIMINARY SITE

LOCATED IN
T.27S., R.14W., SECTION 25, W.M.
COOS COUNTY, OREGON

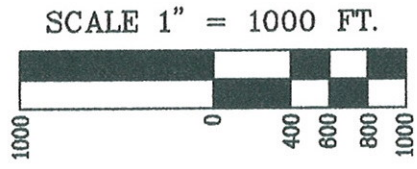


RECEIVED
SEP - 6 2005
MLRR

**REGISTERED
PROFESSIONAL
LAND SURVEYOR**

OREGON
June 30, 1995
Jerry Lee Estabrook
2703

EXPIRES 12/31/05



**Stuntzner Engineering
& Forestry, L.L.C.**

ENGINEERING • LAND SURVEYING • FORESTRY
PLANNING • WATER RIGHTS
705 South 4th St. Phone: (541) 287-2872
Post Office Box 116 Coos Bay, Oregon 97420 Fax: (541) 287-0588

Drawn By: Ervin Stingley	Date: Aug. 18, 2005
Checked By: Jerry Estabrook	Drawing No.: 05-258 ph301
Designed By: FM	Revised:
Job Name: Radio Tower Hill	Sheet 1 of 1

TO COOS BAY

TO CHARLESTON

SEC 24

SEC 19

SEC 25

SEC 30

COOS COUNTY
BEAVER HILL
DISPOSAL
FACILITY

RT1 1320 RT2

RH4

RT3

BNL
RH4

N

US HIGHWAY
101

TO
COQUILLE

TO BANDON

MEL RAOID HILL #4
SURFACE & BNL

RECEIVED

SEP - 6 2005

MLRH