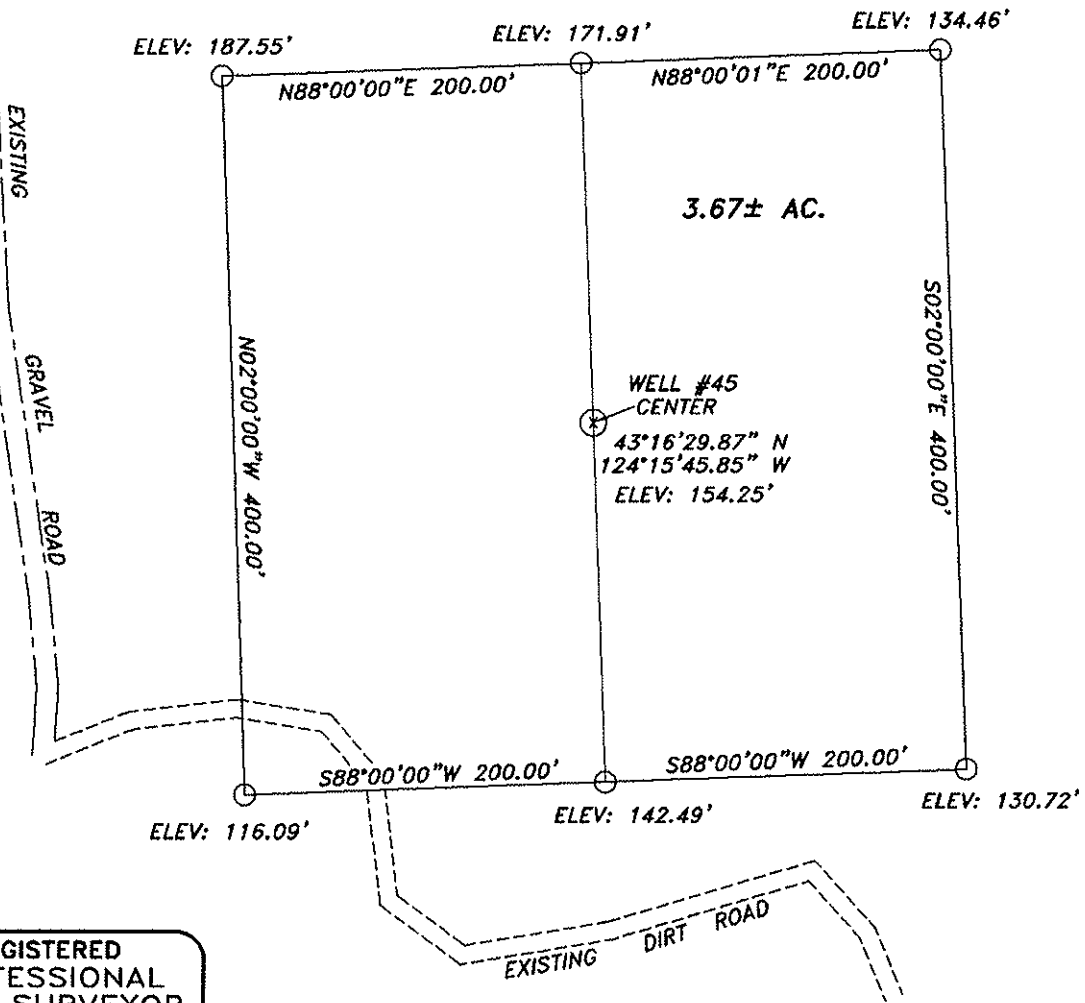


PLAN SHOWING SURVEY OF
MEC WESTPORT 8-32-26-13
 WELL SITE AND ACCESS ROAD
 LOC. (SE NE SEC. 32, T26S, R13W, W.M.)
 COOS COUNTY, OREGON



SCALE: 1" = 100'

NOTE:
 NO BODIES OF WATER WITHIN
 250.00 FEET OF WELL SITE.



**REGISTERED
 PROFESSIONAL
 LAND SURVEYOR**

OREGON
 June 30, 1995
Jerry Lee Estabrook
 2703
 EXPIRES 12/31/07

NOTE:
 ALL SECTION LINES OF THIS EXHIBIT MAP WERE
 CORRELATED TO THE USGS 7.5 MINUTE COOS
 BAY QUADRANGLE MAP USING THE WGS 84
 LATITUDE AND LONGITUDE VALUES FOR THE
 WELLHEAD LOCATION AS SURVEYED BY GPS
 INSTRUMENTATION. NO SECTION TIES WERE
 MADE, EITHER BY SURVEY OR GPS, TO ANY
 ACTUAL SECTION CORNER.

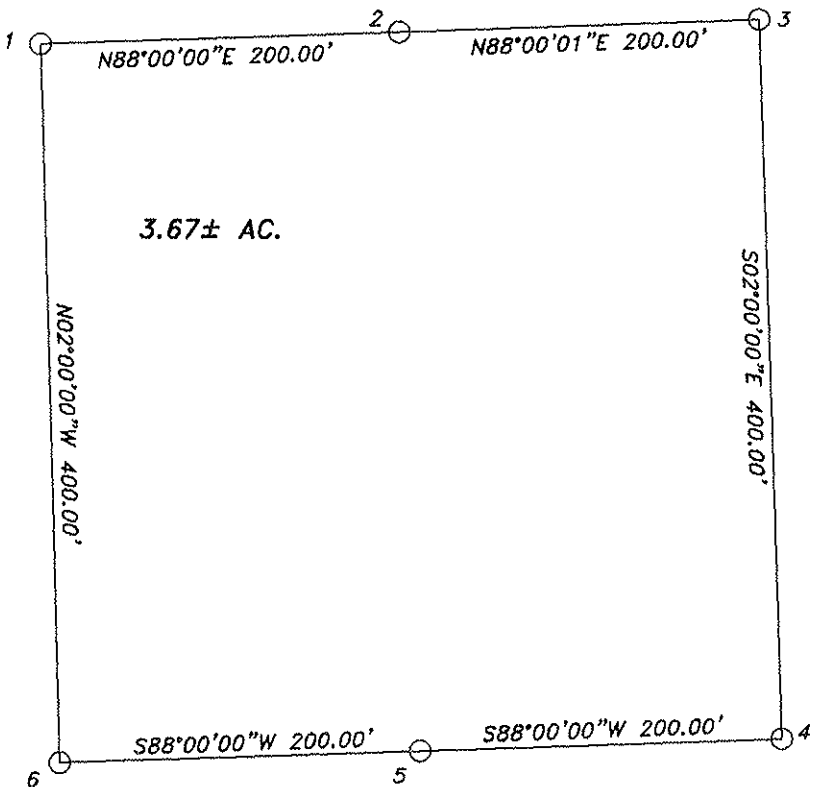
WITNESS - MEC

**Stuntzner Engineering
 & Forestry, L.L.C.**
 ENGINEERING • LAND SURVEYING • FORESTRY
 PLANNING • WATER RIGHTS
 705 South 4th St. Phone: (541) 287-2872
 Post Office Box 116 Coos Bay, Oregon 97402 Fax: (541) 287-0586

Drawn By: Elwin Stigley	Date: June 24, 2006
Checked By: Jerry Estabrook	Drawing No.: 06-210 Site 45
Designed By:	Author:
Job Name: MEC - WESTPORT 8-32-26-13	Sheet 1 of 3

PLAN SHOWING SURVEY OF
MEC WESTPORT 8-32-26-13
 WELL SITE AND ACCESS ROAD
 LOC. (SE NE SEC. 32, T26S, R13W, W.M.)
 COOS COUNTY, OREGON

WELL NAME	SURFACE COORD.		BOTTOM HOLE COORD.		GROUND ELEV.
WESTPORT	} SEC. 32		—		154.25' (NAVD 88)
WELL NAME	GEOGRAPHIC SURFACE CO-ORD. (WGS 84)		GEOGRAPHIC BOTTOM HOLE		DISTANCE & BRG. TO SE SECTION COR.
WESTPORT	LAT.	43°16'29.87" N	LAT.		1018.23' FEL 2039.73' FNL
	LONG.	124°15'45.85" W	LONG.		
WELL NAME	UTM CO-ORDINATES (ZONE 10)				AREA
WESTPORT	SURFACE		BOTTOM HOLE		PAD SITE = 3.67± AC.
	15721540.799				ACCESS ROAD =
	1304569.469				TOTAL = 3.67± AC.



NORTH
 SCALE: 1" = 100'

CORNER ELEVATIONS	
1	187.55'
2	171.91'
3	134.46'
4	130.72'
5	142.49'
6	116.09'

REGISTERED
 PROFESSIONAL
 LAND SURVEYOR

OREGON
 June 30, 1995
Jerry Lee Estabrook
 2703
 EXPIRES 12/31/07

WITNESS - MEC

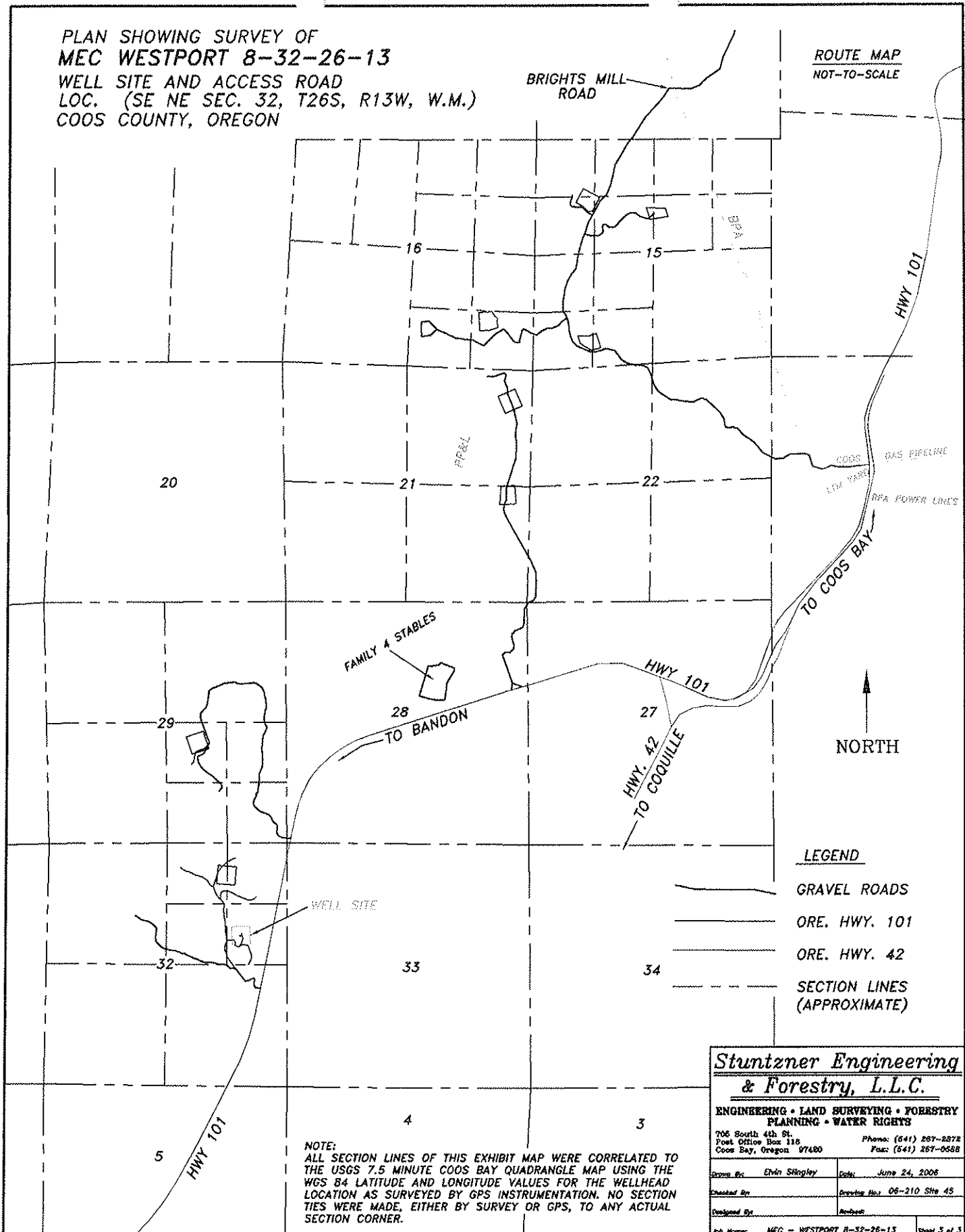
Stuntzner Engineering & Forestry, L.L.C.
 ENGINEERING • LAND SURVEYING • FORESTRY
 PLANNING • WATER RIGHTS
 706 South 4th St. Phone: (541) 267-2874
 Post Office Box 110 Coos Bay, Oregon 97420 Fax: (541) 267-0588

Drawn By: Edin Shingley	Date: June 24, 2006
Checked By: Jerry Estabrook	Drawing No.: 05-210 Site 45
Designed By:	Revised:

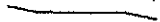
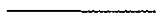
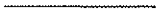
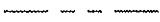
Job Name: MEC - WESTPORT 8-32-26-13 Sheet 2 of 3

PLAN SHOWING SURVEY OF
MEC WESTPORT 8-32-26-13
 WELL SITE AND ACCESS ROAD
 LOC. (SE NE SEC. 32, T26S, R13W, W.M.)
 COOS COUNTY, OREGON

ROUTE MAP
 NOT-TO-SCALE



LEGEND

-  GRAVEL ROADS
-  ORE. HWY. 101
-  ORE. HWY. 42
-  SECTION LINES (APPROXIMATE)

NOTE:
 ALL SECTION LINES OF THIS EXHIBIT MAP WERE CORRELATED TO THE USGS 7.5 MINUTE COOS BAY QUADRANGLE MAP USING THE WGS 84 LATITUDE AND LONGITUDE VALUES FOR THE WELLHEAD LOCATION AS SURVEYED BY GPS INSTRUMENTATION. NO SECTION TIES WERE MADE, EITHER BY SURVEY OR GPS, TO ANY ACTUAL SECTION CORNER.

Stuntzner Engineering & Forestry, L.L.C.

ENGINEERING • LAND SURVEYING • FORESTRY
 PLANNING • WATER RIGHTS

705 South 4th St. Phone: (541) 267-2272
 Post Office Box 116 Coos Bay, Oregon 97460 Fax: (541) 267-0588

Drawn By: Elvin Stingley Date: June 24, 2006

Checked By: Drawing No: 06-210 Sht 45

Designed By: Author: