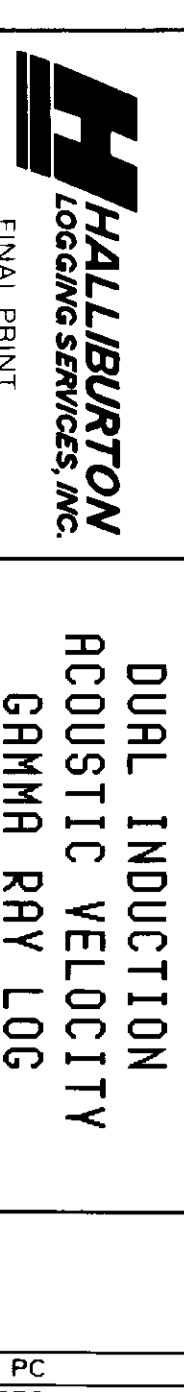


Neverstill 33-30-65



DURL INDUCTION  
ACOUSTIC VELOCITY  
GRAMM RAY LOG

2" = 100'  
COMPANY: O Y OIL INC.  
WELL: NEVERSTILL 33-30  
FIELD: MIST

COUNTY: COLUMBIA  
API NO.: 36-009-00256  
LOCATION: 307 FEET SOUTH AND 1255 FEET WEST FROM THE NORTHERLY CORNER OF: SEC. 30 T1P. 6N RGE. 5N  
ELEV.: K. B. 519.1  
LOG MEASURED FROM: K. B. 11.4 FT ABOVE PERM DATUM  
DATE: 08/03/89

PERM DATUM: K. B. 519.1  
LOG MEASURED FROM: K. B. 11.4 FT ABOVE PERM DATUM  
DATE: 08/03/89  
RIN NO.: ONE  
DEPTH-LOGGER: 2223  
BHT-LOG ATR: 2220  
LOGGING-DRILLER: 384  
CORING-DRILLER: 3788381  
BENCH MARK: 2778

TYPE FLUID IN HOLE: GEL LIGN - SULFONATE  
DENS.: VISC.:  
PH.: FLUID LOSS:  
SOURCE OF SAMPLE: CIRCULATED  
RMC # MEAS. TEMP.: 2.7 #72  
RMC # MEAS. TEMP.: 2.0 #70  
SOURCE RMC # RMC: 2.09 #106  
RM # BHT: 1.89 #106  
RM # BHT: 1.36 #106

RECORDED BY: B. JOHNSON  
WITNESSED BY: D. VANKE

Fold Here

Service Ticket No.: 12116 API Serial No.: 36-009-00256 PGM Version: 1.31 PC

Change in Mud Type or Additional Samples RESISTIVITY SCALE CHANGES

Date/Sample No.	Type Log	Depth	Scale Up Hole	Scale Down Hole

Depth-Driller  
in Hole

Dens.: Visc.:  
PH.: FLUID LOSS:

Source of Sample

Rm # Meas. Temp.:  
Rmf # Meas. Temp.:  
Rmc # Meas. Temp.:  
Source: Rmf:Rmc:

Rm # BHT: 2.09 #106  
Rmf # BHT: 1.89 #106  
Rmc # BHT: 1.36 #106

RESISTIVITY EQUIPMENT DATA

Run No	Tool Type & No	Pad Type	Tool Pos.	Other
ONE	DUAL #W109432	N/A	1.5 S.O.	---
ONE	SGRD #W108932	N/A	1.5 S.O.	---

EQUIPMENT DATA

GAMMA		ACOUSTIC		DENSITY		NEUTRON	
Run No.	ONE	Run No.	ONE	Run No.	N/A	Run No.	N/A
Serial No.	W108594	Serial No.	W112458	Serial No.	W109740	Serial No.	W108749
Model No.	432	Model No.	M305	Model No.	465	Model No.	434
Diameter	3 5/8	No. of Cent.	FOUR	Diameter	4 1/2	Diameter	3 5/8
Detector Model No.	N/A	Spacing	1 FOOT	Log Type	GAMMA	Log Type	NEUTRON
Type	SCINT.			Source Type	CS137	Source Type	AM241BE
Length	4 IN.	LSA	Y	Serial No.	11B	Serial No.	66
Distance To Source	N/A	FWDA	N	Strength	1.5CU	Strength	19.5CU

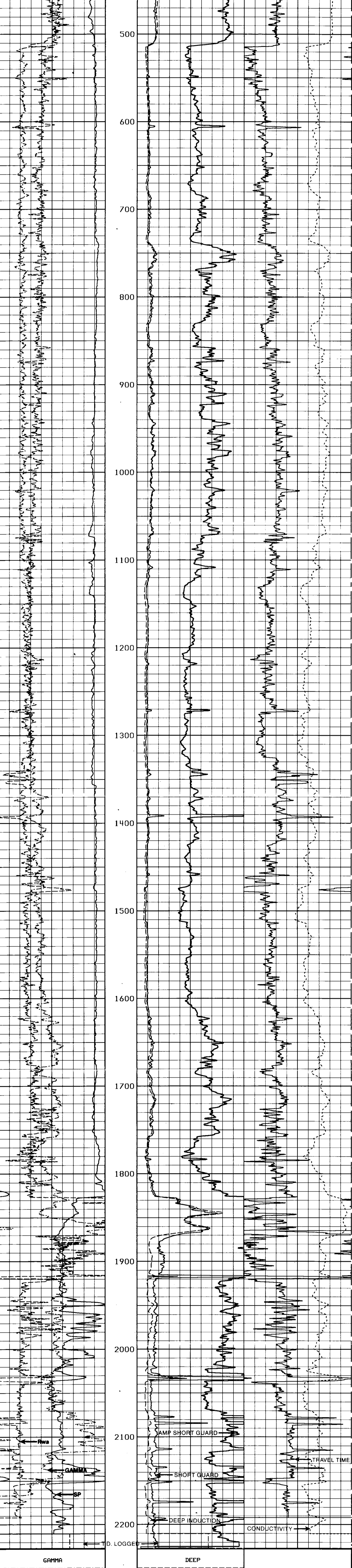
LOGGING DATA

GENERAL			GAMMA		ACOUSTIC		DENSITY		NEUTRON	
Run No.	Depth	Speed	Scale	Scale	Scale	Scale	Scale	Scale	Scale	Scale
ONE	2223	381	30	0	L	R	L	R	L	R

Remarks: ANNUALR HOLE VOLUME CALCULATED USING 5 1/2 INCH CASING.

CREW ON LOCATION: EMERSON, JOHNSON, KIBBE.  
THANK YOU FOR USING HALLIBURTON LOGGING SERVICES!!

Halliburton Logging Services, Inc. does not guarantee the accuracy of any interpretation of log data, conversion of log data to physical rock parameters or recommendations which may be given by H.S. personnel or which may appear on the log or in any other form. Any user of such data, interpretations, conversions or recommendations agrees that H.S. is not responsible except where due to gross negligence or willful misconduct, for any loss, damages, or expenses resulting from the use thereof.



D. LOGGED

GAMMA		ACOUSTIC		DENSITY		NEUTRON	
0	API 150	0	OHM-M 30	0	OHM-M 30	0	OHM-M 30

SP		DELTA-T	
-110[+		150	50

RMA		COND	
0	OHM-M 3	6	1000

GAMMA		ACOUSTIC		DENSITY		NEUTRON	
0	API 150	0	OHM-M 30	0	OHM-M 30	0	OHM-M 30

SP		DELTA-T	
-110[+		150	50

RMA		COND	
0	OHM-M 3	6	1000

REPEAT SECTION

GAMMA		ACOUSTIC		DENSITY		NEUTRON	
0	API 150	0	OHM-M 30	0	OHM-M 30	0	OHM-M 30

SP		DELTA-T	
-110[+		150	50

RMA		COND	
0	OHM-M 3	6	1000

REPEAT SECTION

GAMMA		ACOUSTIC		DENSITY		NEUTRON	
0	API 150	0	OHM-M 30	0	OHM-M 30	0	OHM-M 30

SP		DELTA-T	
-110[+		150	50

RMA		COND	
0	OHM-M 3	6	1000