

OCS-
PO87-
2ET
Redrill
#1

SCHUMBERGER
SONELOG CORPORATION
SONELOG
SOME LOG
WELD SENSITIVE
SONELOG CORPORATION

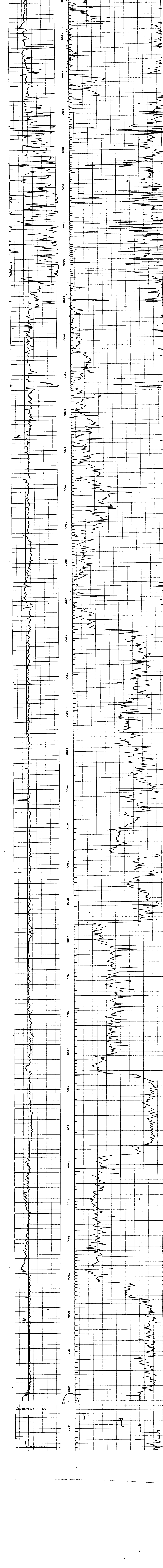
COUNTY OFFSHORE
FIELD or LOCATION NE PORT AREA
WELL NO. F-01-2ET
COMPANY SHELL OIL COMPANY
WELL NO. F-031-2ET Redrill #1
COMPANY SHELL OIL COMPANY
TERMINATED
WELL NO. F-031-2ET Redrill #1
COUNTY OFFSHORE STATE OREGON
LOCATION OREGON MARINE BAY NE PORT AREA
Sec. 1, 2, 3, 4, 5, 6, 7, 8, 9, 10, 11, 12, 13, 14, 15, 16, 17, 18, 19, 20, 21, 22, 23, 24, 25, 26, 27, 28, 29, 30, 31, 32, 33, 34, 35, 36, 37, 38, 39, 40, 41, 42, 43, 44, 45, 46, 47, 48, 49, 50, 51, 52, 53, 54, 55, 56, 57, 58, 59, 60, 61, 62, 63, 64, 65, 66, 67, 68, 69, 70, 71, 72, 73, 74, 75, 76, 77, 78, 79, 80, 81, 82, 83, 84, 85, 86, 87, 88, 89, 90, 91, 92, 93, 94, 95, 96, 97, 98, 99, 100, 101, 102, 103, 104, 105, 106, 107, 108, 109, 110, 111, 112, 113, 114, 115, 116, 117, 118, 119, 120, 121, 122, 123, 124, 125, 126, 127, 128, 129, 130, 131, 132, 133, 134, 135, 136, 137, 138, 139, 140, 141, 142, 143, 144, 145, 146, 147, 148, 149, 150, 151, 152, 153, 154, 155, 156, 157, 158, 159, 160, 161, 162, 163, 164, 165, 166, 167, 168, 169, 170, 171, 172, 173, 174, 175, 176, 177, 178, 179, 180, 181, 182, 183, 184, 185, 186, 187, 188, 189, 190, 191, 192, 193, 194, 195, 196, 197, 198, 199, 200, 201, 202, 203, 204, 205, 206, 207, 208, 209, 210, 211, 212, 213, 214, 215, 216, 217, 218, 219, 220, 221, 222, 223, 224, 225, 226, 227, 228, 229, 230, 231, 232, 233, 234, 235, 236, 237, 238, 239, 240, 241, 242, 243, 244, 245, 246, 247, 248, 249, 250, 251, 252, 253, 254, 255, 256, 257, 258, 259, 260, 261, 262, 263, 264, 265, 266, 267, 268, 269, 270, 271, 272, 273, 274, 275, 276, 277, 278, 279, 280, 281, 282, 283, 284, 285, 286, 287, 288, 289, 290, 291, 292, 293, 294, 295, 296, 297, 298, 299, 300, 301, 302, 303, 304, 305, 306, 307, 308, 309, 310, 311, 312, 313, 314, 315, 316, 317, 318, 319, 320, 321, 322, 323, 324, 325, 326, 327, 328, 329, 330, 331, 332, 333, 334, 335, 336, 337, 338, 339, 340, 341, 342, 343, 344, 345, 346, 347, 348, 349, 350, 351, 352, 353, 354, 355, 356, 357, 358, 359, 360, 361, 362, 363, 364, 365, 366, 367, 368, 369, 370, 371, 372, 373, 374, 375, 376, 377, 378, 379, 380, 381, 382, 383, 384, 385, 386, 387, 388, 389, 390, 391, 392, 393, 394, 395, 396, 397, 398, 399, 400, 401, 402, 403, 404, 405, 406, 407, 408, 409, 410, 411, 412, 413, 414, 415, 416, 417, 418, 419, 420, 421, 422, 423, 424, 425, 426, 427, 428, 429, 430, 431, 432, 433, 434, 435, 436, 437, 438, 439, 440, 441, 442, 443, 444, 445, 446, 447, 448, 449, 450, 451, 452, 453, 454, 455, 456, 457, 458, 459, 460, 461, 462, 463, 464, 465, 466, 467, 468, 469, 470, 471, 472, 473, 474, 475, 476, 477, 478, 479, 480, 481, 482, 483, 484, 485, 486, 487, 488, 489, 490, 491, 492, 493, 494, 495, 496, 497, 498, 499, 500, 501, 502, 503, 504, 505, 506, 507, 508, 509, 510, 511, 512, 513, 514, 515, 516, 517, 518, 519, 520, 521, 522, 523, 524, 525, 526, 527, 528, 529, 530, 531, 532, 533, 534, 535, 536, 537, 538, 539, 540, 541, 542, 543, 544, 545, 546, 547, 548, 549, 550, 551, 552, 553, 554, 555, 556, 557, 558, 559, 560, 561, 562, 563, 564, 565, 566, 567, 568, 569, 570, 571, 572, 573, 574, 575, 576, 577, 578, 579, 580, 581, 582, 583, 584, 585, 586, 587, 588, 589, 590, 591, 592, 593, 594, 595, 596, 597, 598, 599, 600, 601, 602, 603, 604, 605, 606, 607, 608, 609, 610, 611, 612, 613, 614, 615, 616, 617, 618, 619, 620, 621, 622, 623, 624, 625, 626, 627, 628, 629, 630, 631, 632, 633, 634, 635, 636, 637, 638, 639, 640, 641, 642, 643, 644, 645, 646, 647, 648, 649, 650, 651, 652, 653, 654, 655, 656, 657, 658, 659, 660, 661, 662, 663, 664, 665, 666, 667, 668, 669, 670, 671, 672, 673, 674, 675, 676, 677, 678, 679, 680, 681, 682, 683, 684, 685, 686, 687, 688, 689, 690, 691, 692, 693, 694, 695, 696, 697, 698, 699, 700, 701, 702, 703, 704, 705, 706, 707, 708, 709, 710, 711, 712, 713, 714, 715, 716, 717, 718, 719, 720, 721, 722, 723, 724, 725, 726, 727, 728, 729, 730, 731, 732, 733, 734, 735, 736, 737, 738, 739, 740, 741, 742, 743, 744, 745, 746, 747, 748, 749, 750, 751, 752, 753, 754, 755, 756, 757, 758, 759, 760, 761, 762, 763, 764, 765, 766, 767, 768, 769, 770, 771, 772, 773, 774, 775, 776, 777, 778, 779, 780, 781, 782, 783, 784, 785, 786, 787, 788, 789, 790, 791, 792, 793, 794, 795, 796, 797, 798, 799, 800, 801, 802, 803, 804, 805, 806, 807, 808, 809, 810, 811, 812, 813, 814, 815, 816, 817, 818, 819, 820, 821, 822, 823, 824, 825, 826, 827, 828, 829, 830, 831, 832, 833, 834, 835, 836, 837, 838, 839, 840, 841, 842, 843, 844, 845, 846, 847, 848, 849, 850, 851, 852, 853, 854, 855, 856, 857, 858, 859, 860, 861, 862, 863, 864, 865, 866, 867, 868, 869, 870, 871, 872, 873, 874, 875, 876, 877, 878, 879, 880, 881, 882, 883, 884, 885, 886, 887, 888, 889, 890, 891, 892, 893, 894, 895, 896, 897, 898, 899, 900, 901, 902, 903, 904, 905, 906, 907, 908, 909, 910, 911, 912, 913, 914, 915, 916, 917, 918, 919, 920, 921, 922, 923, 924, 925, 926, 927, 928, 929, 930, 931, 932, 933, 934, 935, 936, 937, 938, 939, 940, 941, 942, 943, 944, 945, 946, 947, 948, 949, 950, 951, 952, 953, 954, 955, 956, 957, 958, 959, 960, 961, 962, 963, 964, 965, 966, 967, 968, 969, 970, 971, 972, 973, 974, 975, 976, 977, 978, 979, 980, 981, 982, 983, 984, 985, 986, 987, 988, 989, 990, 991, 992, 993, 994, 995, 996, 997, 998, 999, 1000

DATE 10-23-55
LOG NO. 32357
WELL NO. F-031-2ET
WELL DEPTH 1000 FT.
WELL TYPE 2ET
WELL STATUS TERMINATED
WELL NO. F-031-2ET
WELL DEPTH 1000 FT.
WELL TYPE 2ET
WELL STATUS TERMINATED
WELL NO. F-031-2ET
WELL DEPTH 1000 FT.
WELL TYPE 2ET
WELL STATUS TERMINATED

REMARKS THIS LOG IS NOT TO BE REPRODUCED WITHOUT THE AUTHORIZATION OF THE HASSE BROS. CO.
CHANGES IN Mud Type or Additional Samples
Date Sample No. Type Fluid in Hole
Dens. - Visc. - ml
Sp. Gr. - Fluid Loss - ml
Source of Sample - Run No. - Tool Type - Tool Position - Other
R₁ @ Meas. Temp. - @ - F - F
R₂ @ Meas. Temp. - @ - F - F
R₃ @ Meas. Temp. - @ - F - F
R₄ @ Meas. Temp. - @ - F - F
R₅ @ Meas. Temp. - @ - F - F
R₆ @ Meas. Temp. - @ - F - F
R₇ @ Meas. Temp. - @ - F - F
R₈ @ Meas. Temp. - @ - F - F
R₉ @ Meas. Temp. - @ - F - F
R₁₀ @ Meas. Temp. - @ - F - F
R₁₁ @ Meas. Temp. - @ - F - F
R₁₂ @ Meas. Temp. - @ - F - F
R₁₃ @ Meas. Temp. - @ - F - F
R₁₄ @ Meas. Temp. - @ - F - F
R₁₅ @ Meas. Temp. - @ - F - F
R₁₆ @ Meas. Temp. - @ - F - F
R₁₇ @ Meas. Temp. - @ - F - F
R₁₈ @ Meas. Temp. - @ - F - F
R₁₉ @ Meas. Temp. - @ - F - F
R₂₀ @ Meas. Temp. - @ - F - F
R₂₁ @ Meas. Temp. - @ - F - F
R₂₂ @ Meas. Temp. - @ - F - F
R₂₃ @ Meas. Temp. - @ - F - F
R₂₄ @ Meas. Temp. - @ - F - F
R₂₅ @ Meas. Temp. - @ - F - F
R₂₆ @ Meas. Temp. - @ - F - F
R₂₇ @ Meas. Temp. - @ - F - F
R₂₈ @ Meas. Temp. - @ - F - F
R₂₉ @ Meas. Temp. - @ - F - F
R₃₀ @ Meas. Temp. - @ - F - F
R₃₁ @ Meas. Temp. - @ - F - F
R₃₂ @ Meas. Temp. - @ - F - F
R₃₃ @ Meas. Temp. - @ - F - F
R₃₄ @ Meas. Temp. - @ - F - F
R₃₅ @ Meas. Temp. - @ - F - F
R₃₆ @ Meas. Temp. - @ - F - F
R₃₇ @ Meas. Temp. - @ - F - F
R₃₈ @ Meas. Temp. - @ - F - F
R₃₉ @ Meas. Temp. - @ - F - F
R₄₀ @ Meas. Temp. - @ - F - F
R₄₁ @ Meas. Temp. - @ - F - F
R₄₂ @ Meas. Temp. - @ - F - F
R₄₃ @ Meas. Temp. - @ - F - F
R₄₄ @ Meas. Temp. - @ - F - F
R₄₅ @ Meas. Temp. - @ - F - F
R₄₆ @ Meas. Temp. - @ - F - F
R₄₇ @ Meas. Temp. - @ - F - F
R₄₈ @ Meas. Temp. - @ - F - F
R₄₉ @ Meas. Temp. - @ - F - F
R₅₀ @ Meas. Temp. - @ - F - F
R₅₁ @ Meas. Temp. - @ - F - F
R₅₂ @ Meas. Temp. - @ - F - F
R₅₃ @ Meas. Temp. - @ - F - F
R₅₄ @ Meas. Temp. - @ - F - F
R₅₅ @ Meas. Temp. - @ - F - F
R₅₆ @ Meas. Temp. - @ - F - F
R₅₇ @ Meas. Temp. - @ - F - F
R₅₈ @ Meas. Temp. - @ - F - F
R₅₉ @ Meas. Temp. - @ - F - F
R₆₀ @ Meas. Temp. - @ - F - F
R₆₁ @ Meas. Temp. - @ - F - F
R₆₂ @ Meas. Temp. - @ - F - F
R₆₃ @ Meas. Temp. - @ - F - F
R₆₄ @ Meas. Temp. - @ - F - F
R₆₅ @ Meas. Temp. - @ - F - F
R₆₆ @ Meas. Temp. - @ - F - F
R₆₇ @ Meas. Temp. - @ - F - F
R₆₈ @ Meas. Temp. - @ - F - F
R₆₉ @ Meas. Temp. - @ - F - F
R₇₀ @ Meas. Temp. - @ - F - F
R₇₁ @ Meas. Temp. - @ - F - F
R₇₂ @ Meas. Temp. - @ - F - F
R₇₃ @ Meas. Temp. - @ - F - F
R₇₄ @ Meas. Temp. - @ - F - F
R₇₅ @ Meas. Temp. - @ - F - F
R₇₆ @ Meas. Temp. - @ - F - F
R₇₇ @ Meas. Temp. - @ - F - F
R₇₈ @ Meas. Temp. - @ - F - F
R₇₉ @ Meas. Temp. - @ - F - F
R₈₀ @ Meas. Temp. - @ - F - F
R₈₁ @ Meas. Temp. - @ - F - F
R₈₂ @ Meas. Temp. - @ - F - F
R₈₃ @ Meas. Temp. - @ - F - F
R₈₄ @ Meas. Temp. - @ - F - F
R₈₅ @ Meas. Temp. - @ - F - F
R₈₆ @ Meas. Temp. - @ - F - F
R₈₇ @ Meas. Temp. - @ - F - F
R₈₈ @ Meas. Temp. - @ - F - F
R₈₉ @ Meas. Temp. - @ - F - F
R₉₀ @ Meas. Temp. - @ - F - F
R₉₁ @ Meas. Temp. - @ - F - F
R₉₂ @ Meas. Temp. - @ - F - F
R₉₃ @ Meas. Temp. - @ - F - F
R₉₄ @ Meas. Temp. - @ - F - F
R₉₅ @ Meas. Temp. - @ - F - F
R₉₆ @ Meas. Temp. - @ - F - F
R₉₇ @ Meas. Temp. - @ - F - F
R₉₈ @ Meas. Temp. - @ - F - F
R₉₉ @ Meas. Temp. - @ - F - F
R₁₀₀ @ Meas. Temp. - @ - F - F

AT TO CLEAN FLOOR - 324 AT 111.1 WATER LEVEL TO RT - 58'
CLEAN FLOOR TO WATER LEVEL - 224 AT 111.1
Velocity (feet per second) = 1.000000
Interval Transit Time (microseconds per foot) =

SPONTANEOUS-POTENTIAL	INTERVAL TRANSIT TIME
MILLIVOLTS	MICROSECONDS PER FOOT
OIL BASED MUD	T.S.R.S.R.
- +	150 100 50
CALIPER	250 200 150
HOLE DIAM. IN INCHES	MT THE
0	TIDE CORRECTION OF 0.7 MADE (SUBTRACTED).
	TIDE 15 05 HRS 21'
	15 08 " 0.7"
	20 00 " 0.7"
	LOG COMMENCED IN HOLE 18 25 HAS
	FINISHED OUT 20 15 HRS.
	AMPLITUDE
	MILLIVOLTS
	0



CALIBRATION AFTER
50 100
0 100