

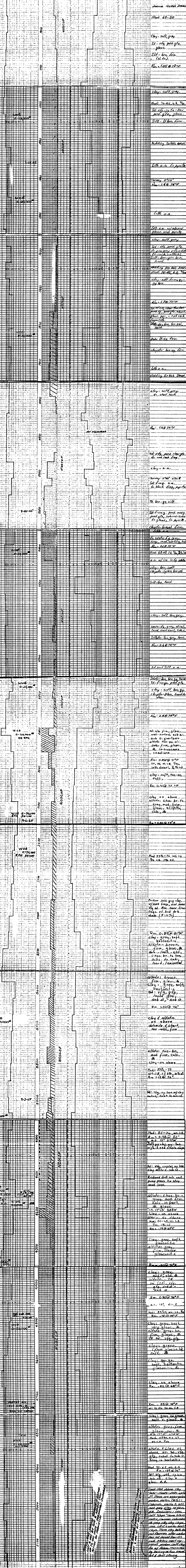
# SHELL OIL CO. FORMATION & HYDROCARBON LOGGING RECORD

COMPANY SHELL OIL COMPANY  
WELL LOGS FIELD NEWPORT AREA  
COUNTY OFFSHORE STATE Oregon  
ELEV. BY AT. BULK TO OCEAN FLOOR 1322' WATER SURF 1324'  
LOCATION OREGON W. 42 BLOCK, SEC. 14, T. 37 N., R. 12 W.  
LOGGING ENGINEERS P.W. PG. 15, R.I.  
TYPE UNIT W.P.D.A

NOTED NOV 24 1965  
NOTED NOV 22 1965  
NOTED NOV 23 1965  
CYPPER  
EACHLER  
SCHAMHELD

ABBREVIATIONS		LEGEND		LITHOLOGY	
NB	NEW BIT	CK	WEIGHT OF MUD	SH	SHALE, CLAY
NCB	NEW CORE BIT	WK	WEIGHT OF MUD	SS	SILTSTONE
CO	CIRCULATED OUT	V	VISCOSITY, API SECONDS	SDY	SILTSTONE
DST	DRILL STEM TEST	F	FILTRATE, API CC'S	SAND	SAND
LAT	LOGGED AFTER TRIP	S	SALINITY, ppmCl	CHERT	CHERT
TRIP	TRIP GAS	R	RESISTIVITY, OHM-METER	CONG	CONGLOMERATE
CG	CONNECTION GAS	Rm	MUD		
PR	POOR RETURNS	Rmc	MUD CAKE		
NR	NO RETURNS	Rmf	MUD FILTRATE		

BIT DATA FT/HR	DRILLING RATE	LITH.	OIL AND GAS ANALYSIS			REMARKS
			MUD GAS DITCH TOT. DITCH PET. VAP.	CUTTINGS GAS UNWASHED TOT. UNWASHED PET. VAP. SOLVENT CUT T.T.	DESCRIPTORS TEST RESULTS MUD DATA SURVEYS	



hole plugged at 7 1/2' depth  
UNSTOPPING FROM 750'

Low sec  
to returns  
of circulation

WOB  
0-20000#  
185 RPM

WOB  
0-30000#  
185 RPM

WOB  
0-29000#  
185 RPM

WOB  
0-29000#  
185 RPM

WOB  
0-29000#  
185 RPM

WOB  
0-29000#  
185 RPM