



LOG created using LPLDT Version 2.5, Aug 21 1997, Copyright (C) Rocky Mountain Geo-Engineering, 1994-1997

OPERATOR: NORTHWEST NATURAL GAS COMPANY
WELL: O/M 12-22-65
LOCATION: SECTION 22, TEN, RW5
COUNTY: COLUMBIA COUNTY
STATE: OREGON
SPOT: 2642.28'S&1224.03'W OF NW 1/4
ELEVATION: KB 565' CL 556'
FIELD: CALVIN CREEK GAS STORAGE FIELD

DATE: AUGUST 25, 1997
TO DATE: 9/1/97 (STUCK IN HOLE)
DATES LOGGED: 8/25/97 - 9/1/97
DETHS LOGGED: 50' - 2082'
LOGGERS: ED PERRY, ERIC HELLER
DRILLING FLUID: LOW SOLIDS POLYMER
DRILLING RIG: TAYLOR RIG #7

LOG TYPE: MUD LOG

SCALE: 1:240 (5.0 INCH/100 FT)

REMARKS:

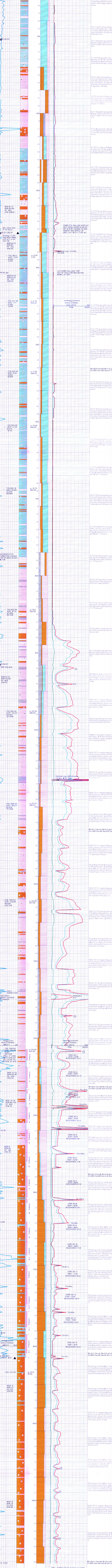
Table with 4 columns and multiple rows listing geological lithologies such as SANDSTONE, SILTSTONE, SHALE, COAL, LESTONE, and various mudstone types with their corresponding patterns and colors.

Table listing geological modifiers such as ALGAL LAMINATED, ARGILLITE GRAIN, ALGAL NON-DESCRIPT, and others with their corresponding symbols.

Table listing porosity/sorting/roundness symbols such as INTERSTITIAL, MOLDIC, ANGLULAR, and others with their corresponding symbols.

Table listing engineering symbols such as BLEND, TEST, STRAPS, CONNECTION, and others with their corresponding symbols.

Table listing abbreviations such as CB - CORE BIT, CD - CONNECTION GAS, and others.



DRILL STRING STUCK IN HOLE AT 2082'.
LAP ON STUCK PIPE. BACK OFF. TO
130' OF STRING IN HOLE (BT NEAR
BIT). SET WHEEL COLLARS OFF. DRILL
1 IN. DRILL PIPE. SET CEMENT PLUG
FROM 2082 TO 1997 (CAS TOTAL).
PREPARE TO SIDETRACK AROUND FISH.