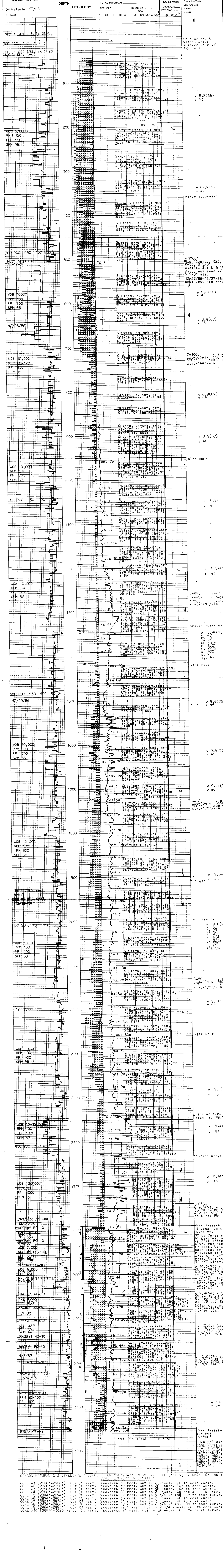


WELL "OM12C-3"	- WEGE -	
COMPANY OREGON NATURAL GAS DEV. CORP.	WESTERN GEO-ENGINEERS	
AREA MIT GAS	"A SERVICE TO THE OIL AND GAS INDUSTRY"	
LOCATION 55.6'N & 413.5'W of SW COR SEC. 3, TEN. 15W, 18N	LITHOLOGY SYMBOLS	
COUNTY, STATE COLUMBIA Co., OREGON	<input type="checkbox"/> Clay <input type="checkbox"/> Shale <input type="checkbox"/> Sand <input type="checkbox"/> Gravel <input type="checkbox"/> Lignite <input type="checkbox"/> Fat <input type="checkbox"/> Oil <input type="checkbox"/> Salt <input type="checkbox"/> Limestone <input type="checkbox"/> Chert	
	REMARKS	
	WELL ELEV. 61.1012.78' KB. 1024.281' SALINITY IN PPM FIBRINATE IN CC/30 MIN. GASTRAP IN AGITATOR TYPE MUD CR2AN/DRISPAK (BEAVER DRILLING FLUIDS) TAYLOR DRILLING RIG #5	
	CASING	
	8 5/8" TO 501' 5" TO 3120' TO	
DATE 12/21/86 to 1/5/87	DEPTH 42' to 3156'	ENGINEERS M. THOMAS M. MCGRATH



OREGON NATURAL GAS DEVELOPMENT CORPORATION "OM12C-3" DIST. GAS DEV. CORP. TEN. 15W, 18N, COLUMBIA CO., OREGON

CORE #	DEPTH (FEET)	RECOVERED (FEET)	CUT IN (HOURS)	REMARKS
CORE #1	(2590 - 2720)	CUT 30 FEET. RECOVERED 20 FEET. CUT IN 2 HOURS. FCM TO CORE AHEAD.		
CORE #2	(2720 - 2760)	CUT 30 FEET. RECOVERED 20 FEET. CUT IN 2 HOURS. FCM TO CORE AHEAD.		
CORE #3	(2760 - 2790)	CUT 30 FEET. RECOVERED 20 FEET. CUT IN 2 HOURS. FCM TO CORE AHEAD.		
CORE #4	(2790 - 2820)	CUT 30 FEET. RECOVERED 20 FEET. CUT IN 2 HOURS. FCM TO CORE AHEAD.		
CORE #5	(2820 - 2850)	CUT 30 FEET. RECOVERED 20 FEET. CUT IN 2 HOURS. FCM TO CORE AHEAD.		
CORE #6	(2850 - 2880)	CUT 30 FEET. RECOVERED 20 FEET. CUT IN 2 HOURS. FCM TO CORE AHEAD.		
CORE #7	(2880 - 2910)	CUT 30 FEET. RECOVERED 20 FEET. CUT IN 2 HOURS. FCM TO CORE AHEAD.		
CORE #8	(2910 - 2940)	CUT 30 FEET. RECOVERED 20 FEET. CUT IN 2 HOURS. FCM TO CORE AHEAD.		
CORE #9	(2940 - 2970)	CUT 30 FEET. RECOVERED 20 FEET. CUT IN 2 HOURS. FCM TO CORE AHEAD.		
CORE #10	(2970 - 3000)	CUT 30 FEET. RECOVERED 20 FEET. CUT IN 2 HOURS. FCM TO CORE AHEAD.		