

DT
Reconstructed TT

Repair VS Field

Using the following logs: PEX BH4

SCANNED

COMPANY: NORTHWEST NATURAL GAS
 WELL: OM 22-26-65 RD
 FIELD: MIST
 COUNTY: COLUMBIA
 STATE: OREGON
 DATE LOGGED: 21-MAY-2000
 DATE PROCESSED: 09-JUN-2000
 WELL LOCATION: 1744.22 SOUTH, 2512.13' EAST FROM THE NW CORNER OF 26
 ELEVATIONS: KB: 631ft DF: 629ft GL: 621ft
 API NUMBER: 36-009-00330
 JOB NUMBER:

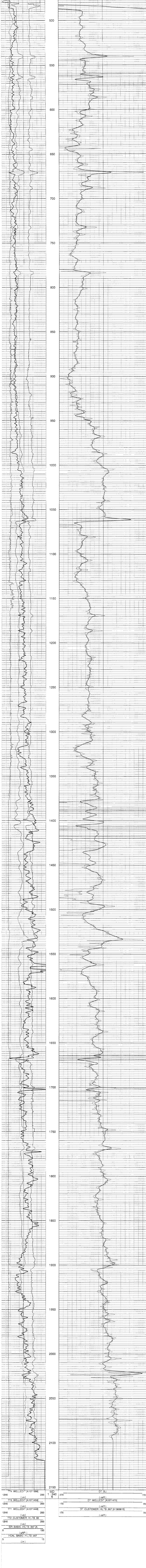
FIELD HERE The well name, location and borehole reference data were furnished by the customer.

A. The data shown on this log are based on information from electric or other measurements and we warrant that we have processed the data to the best of our ability. We do not warrant the accuracy of the data or the results of the processing. The data are provided as a service to our customers and are not to be used for any other purpose. Schlumberger is not responsible for any errors or omissions in this log.

Field Recording: Location: SACRAMENTO Software Version: 9C-303 Engineer: V. K. A. N.
 Office Recording: Location: Baseline: Log Array: T Q U R

Mud and Borehole Measurements:
 Rm @ Measured Temperature: 1.185ohm.m @ 76degF BHT: 86degF Bit Size: 6.25"
 Rmf @ Measured Temperature: 1.05ohm.m @ 72degF Type Fluid in Hole: DMA
 Rmc @ Measured Temperature: 0.93ohm.m @ 76degF Mud Density: 8.9lbm/gal

Remarks:



Company: NORTHWEST NATURAL GAS
 Well: OM 22-26-65 RD
 FIELD: MIST
 COUNTY: COLUMBIA
 STATE: OREGON
 Date Logged: 21-MAY-2000 Date Processed: 09-JUN-2000
 Well Location: 1744.22 SOUTH, 2512.13' EAST FROM THE NW CORNER OF 26
 Elevations: KB: 631ft DF: 629ft GL: 621ft
 API Number: 36-009-00330 Job Number