

**True Vertical Depth
AIT - BHC**

2 inch Display

Using the following logs:

- PEX
- BHC

COMPANY: NORTHWEST NATURAL GAS
WELL: OM 22-26-65 RD

FIELD: MIST
COUNTY: COLUMBIA
STATE: OREGON

COUNTRY: OREGON
Date Logged: 2000/05/21
Date Processed: 17-JUN-2000

Well Location: 1744.22 SOUTH, 2512.13 EAST
FROM THE NW CORNER OF 26

Elevations: KB: 631ft DF: 629ft GL: 621ft

API Number: 36-009-00330 Job Number:



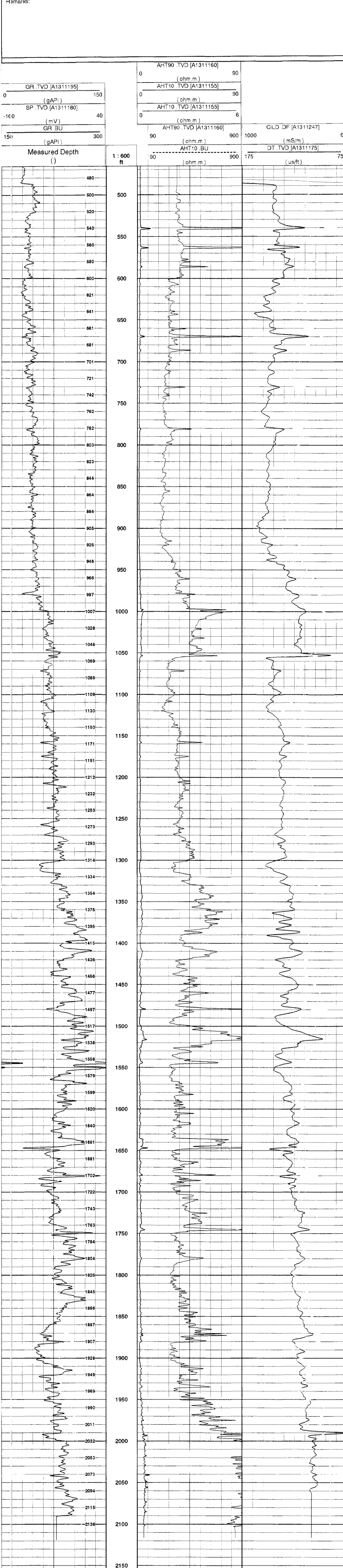
FIELD HERE The well name, location and borehole reference data were furnished by the customer.

All interpretations are opinions based on inferences from electrical or other measurements and we cannot and do not guarantee the accuracy or correctness of any interpretation, and we shall not, except in the case of gross or willful negligence on our part, be liable or responsible for any loss, costs, damages or expenses incurred or sustained by anyone resulting from any interpretations made by any of our officers, agents or employees. These interpretations are also subject to Clause 4 of our General Terms and Conditions as set out in our current Price Schedule.

Field Recording:	Location: SACRAMENTO	Software Version: 9C1-303	Engineer: M.KHAN
Office Recording:	ICS Center: Bakersfield, ICS	Baseline:	Log Analyst: T.Quinlan

Mud and Borehole Measurements:			
Rm @ Measured Temperature: 1.185ohm.m @ 76degF	BHT: 86degF	Bitsize: 6.25in	
Rmf @ Measured Temperature: 1.05ohm.m @ 72degF	Type Fluid in Hole:	DMA	
Rmc @ Measured Temperature: 0.93ohm.m @ 76degF	Mud Density: 8.9lbm/gal		

Remarks:



GR.TVD [A1311195]	0 to 150 (gAPI)
SP.TVD [A1311180]	-160 to 40 (mV)
GR.BU	150 to 300 (gAPI)
AHT90.TVD [A1311160]	0 to 90 (ohm.m)
AHT10.TVD [A1311155]	0 to 90 (ohm.m)
AHT10.BU	0 to 6 (ohm.m)
CILD.DF [A1311247]	0 to 1000 (mS/m)
DT.TVD [A1311175]	175 to 75 (us/ft)

Company:	NORTHWEST NATURAL GAS	Schlumberger	
Well:	OM 22-26-65 RD		
FIELD:	MIST		
COUNTY:	COLUMBIA		
STATE:	OREGON		
Date Logged:	2000/05/21	Date Processed:	17-JUN-2000
Well Location:	1744.22 SOUTH, 2512.13 EAST FROM THE NW CORNER OF 26		
Elevations:	KB: 631ft	DF: 629ft	GL: 621ft
API Number:	36-009-00330	Job Number:	