

# SHIVA PROCESSED LOG

## 5"=100'

COMPANY: NORTHWEST NATURAL GAS  
 WELL: OM 33D-3-65  
 FIELD: MIST FLORA POOL STORAGE  
 COUNTY: COLUMBIA  
 STATE: OR

Location: 10104' N 6 06 36" E FROM THE EAST 1/4  
 1622' W 1 09 34 36" W OF SECTION 3, T8N, 14E

Event(s): K.B.: 1992.3 R.T.: G.L.: 1078.3  
 Date Processed: 6-13-2007 LOGS Processed: EMI  
 Job Number: 5159527 Date Logged: 6-14-2007  
 Interval Processed: 1650-2508 Type Fluid In Hole: GEL  
 Processed By: J CARLSON Location: WILD  
 Processed At: DANVER RES

COMPUTER PROCESSED PRODUCT

Service Ticket No.: 5159527 API Serial No.: 26-009-00238 POM Version: XL v5.7  
 Maximum Deviation: 31.17 deg. @ 3102 KOP 1580'

Remarks: MAGNETIC DECLINATION 19.1 DEGREES.  
 RUN 1: HRD-BCSD-FACT, RUN 2: SDLT-DSNT-NGT.  
 RUN 1, RUN2 MERGED FOR FINAL PRESENTATION.

CREW: M. EMERSON, I. PYLES, S. FANCHER. RIG: TD DRILLING NO. 101.

HALLIBURTON DOES NOT GUARANTEE THE ACCURACY OF ANY REPRESENTATION OF THE LOG DATA. LOGGERS AND LOG REVIEWERS ARE ADVISED THAT THE LOG DATA IS FOR INFORMATIONAL PURPOSES ONLY AND SHOULD NOT BE USED FOR ANY OTHER PURPOSE. LOGGERS AND LOG REVIEWERS ARE ADVISED THAT THE LOG DATA IS NOT REPRESENTATIVE OF THE WELL. HALLIBURTON IS NOT RESPONSIBLE FOR ANY DAMAGE TO PERSONS OR PROPERTY OR FOR ANY LOSS OF PROFITS, REVENUE, OR INCOME, OR FOR ANY OTHER LOSS, INCLUDING REASONABLE ATTORNEY'S FEES, ARISING FROM THE USE OF THIS LOG DATA.

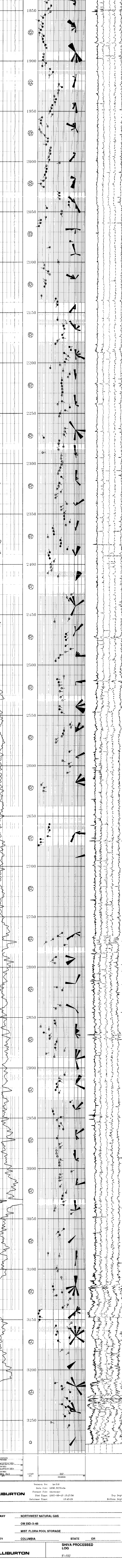
### SHIVA COMPUTATION PARAMETERS

COMPANY NAME: .....  
 WELL NAME: .....  
 FIELD NAME: .....  
 COUNTRY: .....

Tool Reference Plane	Tool type	WBM
Shift Search Angle	65.0 Output selected by N Lines then Quality	
Correlation Interval	9.000 F Number of Maxima	3
Correlation Step	3.000 F Peak Fraction	0.90
Dip Cutoff Angle	55.0 Number of Triangles Searched	20
Closure Cutoff Angle	1.5 Plotted dip quality range	A-E
Planarity Cutoff Angle	4.5 Depth of Investigation	0.90
Declination	19.1 Mirror Dip Rejection	Yes

Version No.: hrc3.0  
 Data File: 1630\_3278.e1a  
 Format File: shivaape  
 Plot Time: 2007-06-13 16:27:42  
 Database Time: 13:45:20

Top Depth: 1621.58  
 Bottom Depth: 3263.04



Version No.: hrc3.0  
 Data File: 1630\_3278.e1a  
 Format File: shivaape  
 Plot Time: 2007-06-13 16:27:50  
 Database Time: 13:45:20

Top Depth: 1621.58  
 Bottom Depth: 3263.04

COMPANY: NORTHWEST NATURAL GAS  
 WELL: OM 33D-3-65  
 FIELD: MIST FLORA POOL STORAGE  
 COUNTY: COLUMBIA STATE: OR

HALLIBURTON SHIVA PROCESSED LOG  
 5"=100'