

# Caliban

## Stress Directional

Using the following logs: FMS GR

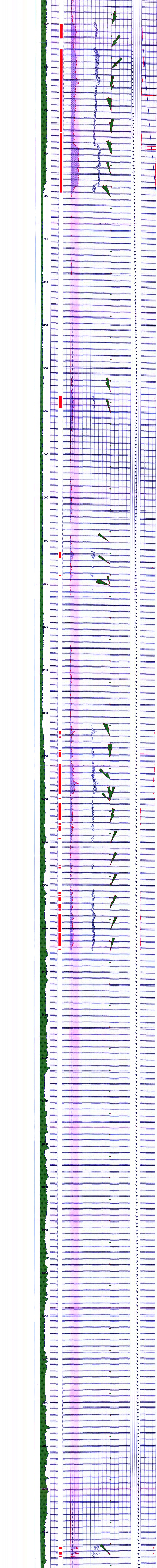
COMPANY: NORTH-WEST NATURAL GAS  
 WELL: OM 43A-22-65  
 FIELD: MIST  
 COUNTY: OREGON  
 STATE: OREGON  
 Date Logged: 3-JUN-2000 Date Processed: 6-JUN-2000  
 Well Location: 2441 82 North 122 17 West  
 From the SW Section 23

Elevations: KB: 1729.46ft DF: 1729.46ft QL: 862.28ft  
 API Number: 36-009-00252 Job Number: 982053

Field Recording: Location: SACRAMENTO Software Version: 9C1-303 Engineer: M.KHAN  
 Office Recording: ICS Center: Baseline: Log Analyst: T.Quinlan

Mud and Borehole Measurements:  
 Fm @ Measured Temperature: 1.1750chm.m @ 99degF BHT: 212degF Bitsize: 7.875in  
 Fmc @ Measured Temperature: 0.8690chm.m @ 90degF Type Fluid in Hole: DMA  
 Fmc @ Measured Temperature: 0.9040chm.m @ 90degF Mud Density: 8.8lbm/gal

Remarks:  
 CASING: 8 5/8" 32 LB/FT  
 SONIC RUN WITH CMS Z  
 MAXIMUM HOLE DEVIATION: 19.25 DEG AT 1305 FT  
 982053



GR CH	NM13 [A103342]	DCX [A1033786]	0	5	0	10
GR CR	NM13 [A103342]	DCX [A1033786]	0	5	0	10
GR ARE	BRKOUT_AREA	Ovalization	0	5	0	10

Company: NORTH-WEST NATURAL GAS  
 Well: OM 43A-22-65  
 Field: MIST  
 County: OREGON

Schlumberger