

SCANNED
Schlumberger

GEOFAME
PROCESSED
INTERPRETATION

True Vertical Depth AIT - BHC

2 inch Display

© Mark of Schlumberger

Using the following logs: PEX BHC

COMPANY: NORTHWEST NATURAL GAS
WELL: OM 43A-22-65

FIELD: MIST
COUNTY: COLUMBIA
STATE: OREGON
DATE LOGGED: 3-JUN-2000
WELL LOCATION: 2441.82' North, 122.17' West
From the SW Section 23

Elevations: KB: 1734.46ft DF: 1733.46ft GL: 862.23ft
API Number: 36-009-00352 Job Number:

FOLD HERE The well name, location and borehole reference data were furnished by the customer.

All interpretations are opinions based on inferences from electrical or other measurements and we cannot and do not guarantee the accuracy or correctness of any interpretation, and we shall not, except in the case of gross or willful negligence on our part, be liable or responsible for any loss, costs, damages or expenses incurred or sustained by anyone resulting from any interpretations made by any of our officers, agents or employees. These interpretations are also subject to Clause 4 of our General Terms and Conditions as set out in our current Price Schedule.

Field Recording: Location: SACRAMENTO Software Version: 9C1-303 Engineer: M.KHAN

Office Recording: ICS Center: Baseline: Log Analyst: T.Quinian

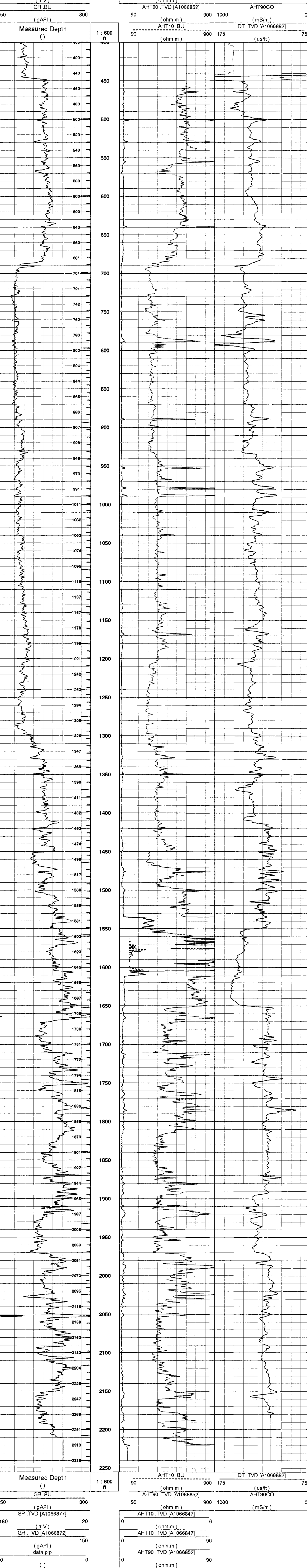
Mud and Borehole Measurements:

Rm @ Measured Temperature: 1.175ohm.m @ 99degF BHT: 212degF Bitsize: 7.875in

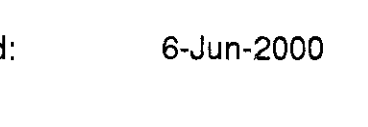
Rmf @ Measured Temperature: 0.869ohm.m @ 90degF Type Fluid in Hole: DMA

Rmc @ Measured Temperature: 0.904ohm.m @ 92degF Mud Density: 8.8lbm/gal

Remarks:
CASING 8 5/8" 32 LB/FT
SONIC RUN WITH CME-Z
MAXIMUM HOLE DEVIATION: 19.25 DEG AT 1305 FT



Company: NORTHWEST NATURAL GAS
Well: OM 43A-22-65
FIELD: MIST
COUNTY: COLUMBIA
STATE: OREGON



Date Logged: 3-JUN-2000 Date Processed: 6-Jun-2000
Well Location: 2441.82' North, 122.17' West
From the SW Section 23

Elevations: KB: 1734.46ft DF: 1733.46ft GL: 862.23ft
API Number: 36-009-00352 Job Number: