

WELL LOGGING, INC.

COMPANY ARCO OIL AND GAS COMPANY

WELL Oregon #34-25-66

FIELD MIST

LOCATION 2246.66'W & 326.31'N from the SE corner section 25, T6N, R6W, W4M.

COUNTY, STATE Clatsop, Oregon

API WELL INDEX NO.

ELEVATION 674.15'G.L. 685.65'K.B.

DATES FROM 10-11-89 TO 10-16-89

DEPTHS FROM 40' TO 2455'

SPUD DATE 10-11-89

DRILLING CONTRACTOR Taylor Drilling Co. #5

MUD COMPANY Barold

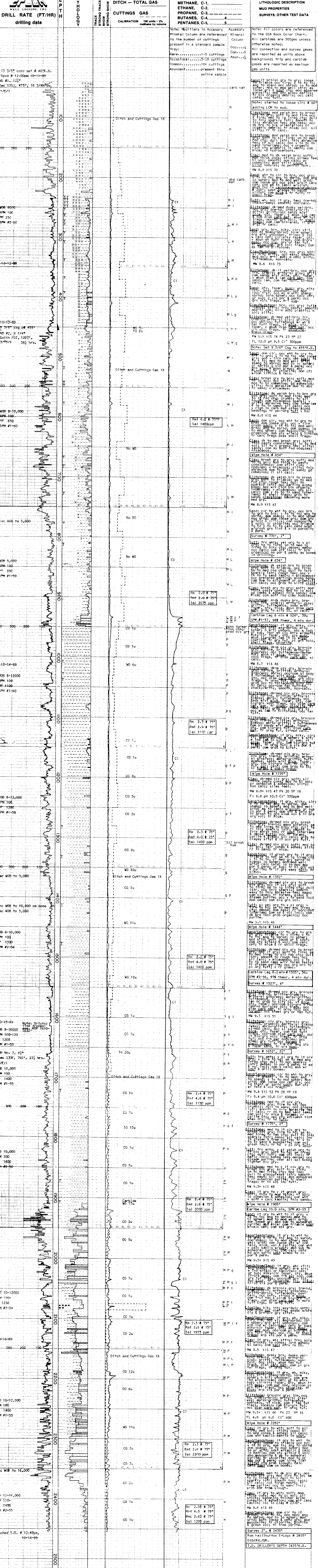
LOGGING GEOLOGISTS Gary Sandstrom Harry Snowden

ABBREVIATIONS table with columns for well types (NB BIT, RRB, etc.) and mud properties (MW, VIS, etc.)

CASING RECORD table with columns for size (13 3/8", 9 5/8", etc.) and depth (40', 455', etc.)

Legend for rock types: SAND/SANDSTONE, CLAY, LIMESTONE, TUFF, LIGNITE, SHALE, MUDSTONE, DOLOMITE, FOSSIL, GLAUCONITE, SILTSTONE, CONGLOMERATE, BASALT, MICA, PYRITE

OIL BASED ON LIVE OIL IN UNWASHED CUTTINGS AND PERCENT STAINING AND FLUORESCENCE OF WASHED SAMPLES.



Reached T.D. # 12:45pm, 10-16-89