

Schlumberger

2" NEUTRON-DENSITY

CSU

COMPANY: REICHHOLD ENERGY CORPORATION
 WELL: "PAUL" #34-32 REDRILL #2
 FIELD: MIST
 COUNTY: COLUMBIA
 STATE: OREGON
 NATION: USA
 LOCATION: 241°N & 255°E FROM
 SOUTH 1/4 CORNER OF
 SEC: 32 T1P: 7N RGE: 25M

OTHER SERVICES-
DIL-BHC

PERMANENT DATUM: GL
 ELEV. OF PERM. DATUM: 614.0 F
 LOG MEASURED FROM: KB
 13.0 F ABOVE PERM. DATUM
 DRLG. MEASURED FROM: KB
 ELEVATIONS-
 KB: 627.0 F
 DF: 614.0 F
 GL: 614.0 F

PROGRAM
 TAPE NO:
 26.2
 SERVICE
 ORDER NO:
 438249

DATE: 24 SEP 84
 RUN NO: 1

DEPTH-DRILLER: 2719.0 F
 DEPTH-LOGGER: 2716.0 F
 BTM. LOG INTERVAL: 2713.0 F
 TOP LOG INTERVAL: 1700.0 F
 CASING-DRILLER: 497 F
 CASING-LOGGER: 497 F
 CASING: 8 5/8
 BIT SIZE: 7 7/8

TYPE FLUID IN HOLE: GEL/LIGNO
 DENSITY: 10.0 LB/G
 VISCOSITY: 51.0 S
 PH: 9.0
 FLUID LOSS: 6.4 C3
 SOURCE OF SAMPLE: FLDLINE
 RM: 1.560 DHMM AT 74.0 DEGF
 RMF: 1.230 DHMM AT 69.0 DEGF
 RMC: 2.070 DHMM AT 69.0 DEGF
 SOURCE RM/RMC: MEASURED/MEASURED
 RM AT BHT: 1.203 DHMM AT 98.0 DEGF
 RMF AT BHT: .890 DHMM AT 98.0 DEGF
 RMC AT BHT: 1.498 DHMM AT 98.0 DEGF

TIME CIRC. STOPPED: 17:00 9-24
 TIME LOGGER ON BTM.: 22:40 9-24

MAX. REC. TEMP: 98.0 DEGF

LOGGING UNIT NO: 8128
 LOGGING UNIT LOC: SACRAMENTO
 RECORDED BY: PILCH/ZWALLER
 WITNESSED BY: THOMAS/ALGER

REMARKS:

850PPM CL

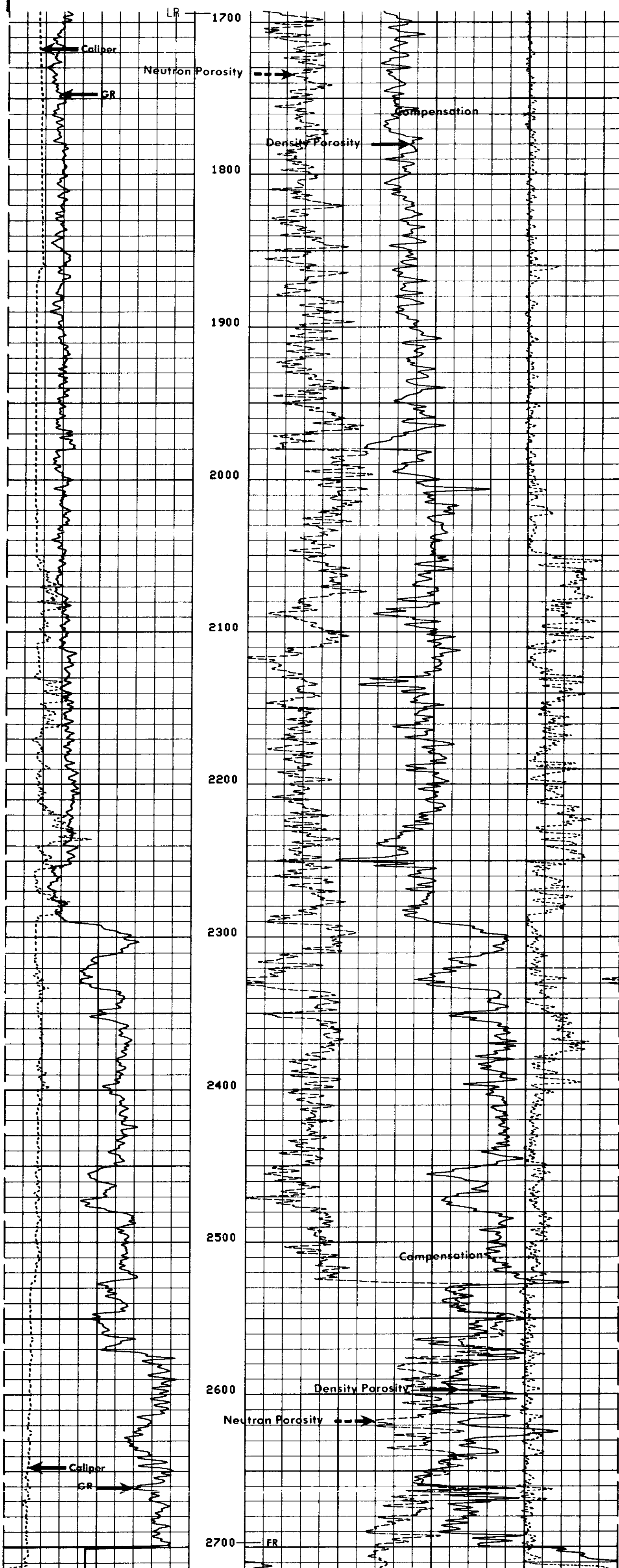
EQUIPMENT NUMBERS-

PGS-HB 542 PGC-JA 569 PDH-M 264 CNC-A 1132
 SGC-JC 3485 NLM-BC 456

ALL INTERPRETATIONS ARE OPINIONS BASED ON INFERENCES FROM ELECTRICAL OR OTHER MEASUREMENTS AND WE CANNOT, AND DO NOT GUARANTEE THE ACCURACY OR CORRECTNESS OF ANY INTERPRETATIONS, AND WE SHALL NOT, EXCEPT IN THE CASE OF GROSS OR WILLFUL NEGLIGENCE ON OUR PART, BE LIABLE OR RESPONSIBLE FOR ANY LOSS, COSTS, DAMAGES OR EXPENSES INCURRED OR SUSTAINED BY ANYONE RESULTING FROM ANY INTERPRETATION MADE BY ANY OF OUR OFFICERS, AGENTS OR EMPLOYEES. THESE INTERPRETATIONS ARE ALSO SUBJECT TO OUR GENERAL TERMS AND CONDITIONS AS SET OUT IN OUR CURRENT PRICE SCHEDULE.

CALI(IN.)		DRHO(G/C3)	
6.0000	16.0000	-.2500	.25000
GR (GAPI)		DPHI	0.0
0.0	150.00	NPHI	0.0
			.60000

FILE 101 24-SEP-84 23:19
 DATA ACQUIRED 24-SEP-84 23:14



FILE 101 24-SEP-84 23:17
 DATA ACQUIRED 24-SEP-84 22:39

CALI(IN.)		DRHO(G/C3)	
6.0000	16.0000	-.2500	.25000
GR (GAPI)		DPHI	0.0
0.0	150.00	NPHI	0.0
			.60000

SENSOR MEASURE POINT TO TOOL ZERO

NCNL 18.0 FEET GR 26.5 FEET
 FFDC 2.7 FEET FCNL 18.0 FEET
 CALI 2.7 FEET NFDC 2.7 FEET
 NRAT 18.0 FEET TENS -.2 FEET

PARAMETERS

NAME	VALUE	UNIT	NAME	VALUE	UNIT
HC	CALI		PSNR	2.34400	
FD	1.00000	G/C3	MATR	SAND	
FDCC	ALLO		MDFR	2.65000	G/C3
FPHI	PHIX		BHF	HATE	
BS	7.87500	IN	BHS	OPEN	
PP	NORM		DD	0.0	F