

COMPANY: REICHHOLD ENERGY CORPORATION
 WELL: "PAUL" #34-32 REDRILL #2
 FIELD: MIST
 COUNTY: COLUMBIA
 STATE: OREGON
 NATION: USA
 LOCATION: 241'N & 295'E FROM SOUTH 1/4 CORNER OF SEC: 32 TWP: 7N RGE: 25N
 PERMANENT DATUM: GL ELEVATIONS-
 ELEV. OF PERM. DATUM: 614.0 F KB: 627.0 F
 LOG MEASURED FROM: PERM. DATUM DF: 614.0 F
 DRLG. MEASURED FROM: KB GL: 614.0 F
 DATE: 24 SEP 84
 RUN NO: 1
 DEPTH-DRILLER: 2719.0 F
 DEPTH-LOGGER: 2716.0 F
 BTM LOG INTERVAL: 2624.0 F
 TOP LOG INTERVAL: 497.0 F
 CASING-DRILLER: 497 F
 CASING-LOGGER: 8 3/8
 BIT SIZE: 7 7/8

OTHER SERVICES-
 DTI
 FNC/CNL/GR
 PROGRAM
 TAPE NO:
 26.2
 SERVICE
 ORDER NO:
 432549

TYPE FLUID IN HOLE: GEL/LIGNO
 DENSITY: 10.0 LB/G
 VISCOSITY: 51.0 S
 PH: 9.0
 FLUID LOSS: 6.4 C3
 SOURCE OF SAMPLE: FLOWLINE
 RM: 1.560 DHMM AT 74.0 DEGF
 RMF: 1.230 DHMM AT 69.0 DEGF
 RMC: 2.070 DHMM AT 69.0 DEGF
 SOURCE RMF/RMC: MEASURED/MEASURED
 RM AT BHT: 1.226 DHMM AT 96.0 DEGF
 RMF AT BHT: .907 DHMM AT 96.0 DEGF
 RMC AT BHT: 1.527 DHMM AT 96.0 DEGF
 TIME CIRC. STOPPED: 17:00
 TIME LOGGER ON BTM.: 19:50
 MAX. REC. TEMP: 96.0 DEGF
 LOGGING UNIT NO: 8128
 LOGGING UNIT LOC: SACRAMENTO
 RECORDED BY: PILCH/ZWALLER
 WITNESSED BY: THOMAS/ALGER

REMARKS:
 850PPM CL

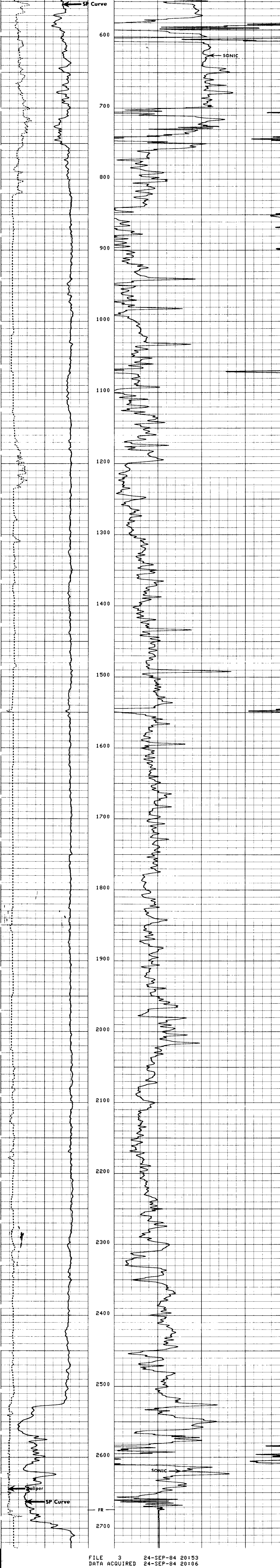
EQUIPMENT NUMBERS-

DIS-EC 567 DIC-DA 658 MCD-DA 1237 SLS-RC 252
 SLC-FA 1468 IEM-BD-304 SLM-CA 138 SDM-BA 1331

ALL INTERPRETATIONS ARE OPINIONS BASED ON INFERENCES FROM ELECTRICAL OR OTHER MEASUREMENTS AND WE CANNOT, AND DO NOT GUARANTEE THE ACCURACY OR CORRECTNESS OF ANY INTERPRETATIONS, AND WE SHALL NOT, EXCEPT IN THE CASE OF GROSS OR HILLFUL NEGLIGENCE ON OUR PART, BE LIABLE OR RESPONSIBLE FOR ANY LOSS, COSTS, DAMAGES OR EXPENSES INCURRED OR SUSTAINED BY ANYONE RESULTING FROM ANY INTERPRETATION MADE BY ANY OF OUR OFFICERS, AGENTS OR EMPLOYEES. THESE INTERPRETATIONS ARE ALSO SUBJECT TO OUR GENERAL TERMS AND CONDITIONS AS SET OUT IN OUR CURRENT PRICE SCHEDULE.

CALI(IN) 6.0000 16.000 DT (US/F) 150.00 50.000
 SP (MV) -100.0 0.0

FILE 3 24-SEP-84 20:56
 DATA ACQUIRED 24-SEP-84 20:44



CALI(IN) 6.0000 16.000 DT (US/F) 150.00 50.000
 SP (MV) -100.0 0.0

SENSOR MEASURE POINT TO TOOL ZERO

CBL	43.9	FEET	AMPL	43.9	FEET
TT3	40.1	FEET	TT4	39.1	FEET
TT1	42.9	FEET	TT2	43.9	FEET
CALI	31.8	FEET	SRAT	41.4	FEET
SFL	6.4	FEET	ILD	9.4	FEET
SP	2.5	FEET	ILM	5.7	FEET
TENS	2.5	FEET	SPAR	2.5	FEET
NDIS	35.6	FEET			

PARAMETERS

NAME	VALUE	UNIT	NAME	VALUE	UNIT
WSV1	WF1		DWS	160	
DSIN	5	US	DDEL	200	US
CDTS	100.000		DWCO	512	
DTF	189.000	US/F	DTM	56.0000	US/F
SBR	1.00000	DHMM	DSEC	7.70000	MMHD
BHS	OPEN		MSEC	5.80000	MMHD
DO	0.0	F	BS	7.87500	IN
PP	NORM				

TAPE NOT MADE