



COMPANY: REICHHOLD ENERGY CORPORATION

WELL: PAUL 34-32

FIELD: MIST-NEHALEM BASIN

COUNTY: COLUMBIA

STATE: OREGON

NATION: USA

LOCATION: 741.73' N & 255.80' E OF S 1/4 CORNER T1P1 6N

SECT: 32

PERMANENT DATUM: GL

ELEV. OF PERM. DATUM: 614.7'

LOG MEASURED FROM: KB

DRLG. MEASURED FROM: KB

DATE: 10 NOV 1982

RUN NO: 1

DEPTH-DRILLER: 2699.0'

DEPTH-LOGGER: 2697.0'

BTM LOG INTERVAL: 2691.0'

TOP LOG INTERVAL: 495.0'

CASING-DRILLER: 497'

CASING-LOGGER: 495'

CASING: 8.625

BIT SIZE: 7.875

DEPTH: 2699'

RECORDED BY: DEC 13 1982
FDC/CML/GR

OTHER SERVICES-
BNC
MHC
CIS

PROGRAM
TAPES
NO. 4
SERIES
DRES NO.
303546

TYPE FLUID IN HOLE: LIGNOSULFONATE
 DENSITY: 10.2 LB/G
 VISCOSITY: 60.0 S
 PH: 10.0
 FLUID LOSS: 5.2 C3
 SOURCE OF SAMPLE: CIRC.
 RM: 1.510 OHMM AT 69.0 DEGF
 RMF: 2.050 OHMM AT 45.0 DEGF
 RMC: 2.130 OHMM AT 46.0 DEGF
 SOURCE RMF/RMC: /MEAS.
 RM AT BHT: 1.171 OHMM AT 91.0 DEGF
 RMF AT BHT: 1.087 OHMM AT 91.0 DEGF
 RMC AT BHT: 1.151 OHMM AT 91.0 DEGF
 TIME CIRC. STOPPED: 1200
 TIME LOGGER ON BTM: 1358
 MAX. REC. TEMP: 91.0 DEGF
 LOGGING UNIT NO: 8076
 LOGGING UNIT LOC: SACRAMENTO
 RECORDED BY: ANDERSEN
 WITNESSED BY: ALGER

REMARKS:

EQUIPMENT NUMBERS-

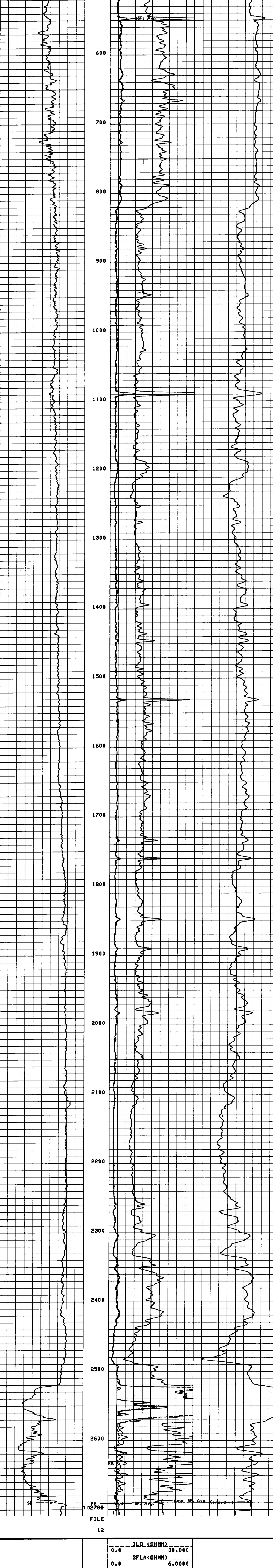
IS 457 IC 342 IEM 231 SLC 1261
 SLS 2251 MCD 1186 SLM 428

ALL INTERPRETATIONS ARE OPINIONS BASED ON INFERENCES FROM ELECTRICAL OR OTHER MEASUREMENTS AND WE CANNOT, AND DO NOT GUARANTEE THE ACCURACY OR CORRECTNESS OF ANY INTERPRETATIONS, AND WE SHALL NOT, EXCEPT IN THE CASE OF GROSS OR WILLFUL NEGLIGENCE ON OUR PART, BE LIABLE OR RESPONSIBLE FOR ANY LOSS, COSTS, DAMAGES OR EXPENSES INCURRED OR SUSTAINED BY ANYONE RESULTING FROM ANY INTERPRETATION MADE BY ANY OF OUR OFFICERS, AGENTS OR EMPLOYEES. THESE INTERPRETATIONS ARE ALSO SUBJECT TO OUR GENERAL TERMS AND CONDITIONS AS SET OUT IN OUR CURRENT PRICE SCHEDULE.

FILE 102

SP (MV)	ILD (OHMM)	30.000	CILD(MMHO)
	SFLA(OHMM)	6.0000	
-100.0	0.0	0.0	0.0

FILE 12



FILE 12

SP (MV)	ILD (OHMM)	30.000	CILD(MMHO)
	SFLA(OHMM)	6.0000	
-100.0	0.0	0.0	0.0

SENSOR MEASURE POINT TO TENSION REFERENCE POINT

AMPL	43.9 FEET	DT	41.4 FEET
SRAT	41.4 FEET	CBL	43.9 FEET
CALI	31.8 FEET	TT	43.9 FEET
SFL	6.5 FEET	ILM	9.4 FEET
SP	2.5 FEET	ILD	5.8 FEET
TENS	.0 FEET	SPAR	2.5 FEET
NOIS	35.7 FEET		

PARAMETERS					
NAME	VALUE	UNIT	NAME	VALUE	UNIT
CDTS	100.000		DS	7.87500	IN
DTF	189.000	US/F	BS	56.0000	US/F
SBR	1.00000	OHMM	DSEC	10.5000	MMHO
FPHI	SPhi		MSEC	8.50000	MMHO
DD	0.0	F	BHS	OPEN	

COMPANY: REICHHOLD ENERGY CORPORATION
 WELL: PAUL 34-32
 FIELD: MIST-NEHALEM BASIN
 COUNTY: COLUMBIA STATE: OREGON

SCHL. FR: 2691.0'
 SCHL. TD: 2697.0'
 DRLR. TD: 2699.0'
 Elev: KB 626.1'
 DF N/A
 GL 614.7'

Rf
Pou