

2" DUAL INDUCTION-SFL

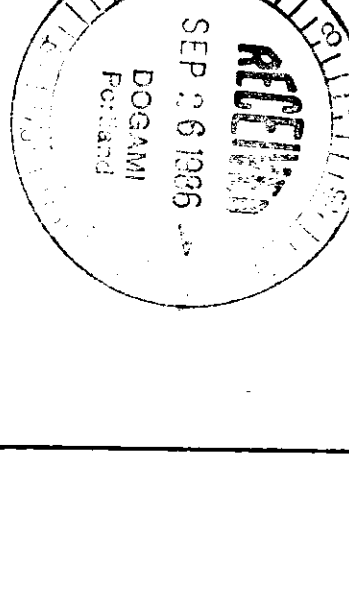
CSU

COMPANY: REICHHOLD ENERGY CORPORATION  
 HELL: -POLAR- 431-12

FIELD: MIST  
 COUNTY: COLUMBIA  
 STATE: OREGON  
 NATION: U.S.A.  
 LOCATION: N 150.51'E & 424.01'S FROM  
 1/4 CORNER TWP. 6N  
 SEC: 12 RGE: 5W

PERMANENT DATUM: GL  
 ELEV. OF PERM. DATUM: 1140.3 F  
 LOG MEASURED FROM: KB 1151.7 F  
 11.1 F ABOVE PERM. DATUM  
 DRUG. MEASURED FROM: KB  
 GL: 1140.3 F

DATE: 11 NOV 84  
 RUN NO: 1  
 DEPTH-DRILLER: 2750.0 F  
 DEPTH-LOGGER: 2751.0 F  
 BTM. LOG INTERVAL: 2745.0 F  
 TOP LOG INTERVAL: 632.0 F  
 CASING-DRILLER: 632 F  
 CASING-LOGGER: 632 F  
 CASING: 8 5/8"  
 BIT SIZE: 7 7/8"  
 BIT DEPTH: 2750 F



OTHER SERVICES-  
 BHC  
 HDT

PROGRAM  
 TYPE NO:  
 26.2  
 SERVICE  
 ORDER NO:  
 432292

TYPE FLUID IN HOLE: GEL/LIGNO  
 DENSITY: 8.7 LB/G  
 VISCOSITY: 50.0 S  
 PH: 9.5  
 FLUID LOSS: 7.2 C3  
 SOURCE OF SAMPLE: FLOWLINE  
 RM: 4.340 DHMM AT 62.0 DEGF  
 RMF: 5.090 DHMM AT 52.0 DEGF  
 RMC: 5.300 DHMM AT 52.0 DEGF  
 SOURCE RMF/RMC: MEASURED/MEASURED  
 RM AT BHT: 2.879 DHMM AT 97.0 DEGF  
 RMF AT BHT: 2.887 DHMM AT 97.0 DEGF  
 RMC AT BHT: 3.006 DHMM AT 97.0 DEGF  
 TIME CIRC. STOPPED: 05:30 11-11  
 TIME LOGGER ON BTM.: 13:45 11-11  
 MAX. REC. TEMP: 97.0 DEGF  
 LOGGING UNIT NO: 8128  
 LOGGING UNIT LOC: SACRAMENTO  
 RECORDED BY: PILCH  
 WITNESSED BY: ALGER

REMARKS:  
 CEDAR CHIPS USED AS LOST CIRCULATION MATERIAL.  
 300 PPM CHLORIDES.

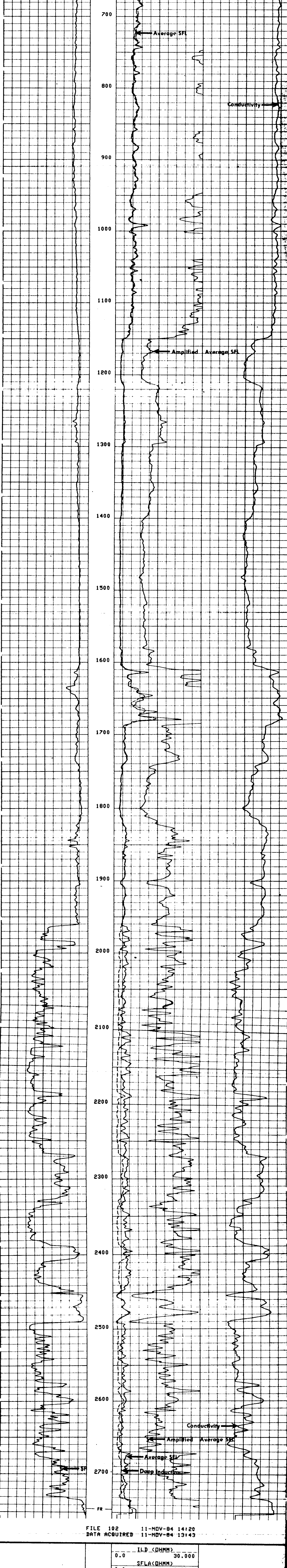
EQUIPMENT NUMBERS-  
 DIS-EC 567 DIC-DA 658 SLS-RC 525 SLC-FA 468  
 MCD-DA 1237 IEM-BD 304 SLM-CA 138

ALL INTERPRETATIONS ARE OPINIONS BASED ON INFERENCES FROM ELECTRICAL OR OTHER MEASUREMENTS AND WE CANNOT, AND DO NOT GUARANTEE THE ACCURACY OR CORRECTNESS OF ANY INTERPRETATIONS, AND WE SHALL NOT, EXCEPT IN THE CASE OF GROSS OR WILLFUL NEGLIGENCE ON OUR PART, BE LIABLE OR RESPONSIBLE FOR ANY LOSS, COSTS, DAMAGES OR EXPENSES INCURRED OR SUSTAINED BY ANYONE RESULTING FROM ANY INTERPRETATION MADE BY ANY OF OUR OFFICERS, AGENTS OR EMPLOYEES. THESE INTERPRETATIONS ARE ALSO SUBJECT TO OUR GENERAL TERMS AND CONDITIONS AS SET OUT IN OUR CURRENT PRICE SCHEDULE.

FILE 103 11-NOV-84 14:34  
 DATA ACQUIRED 11-NOV-84 14:13

SP (MV)	ILD (DHMM)	30.000	CILD(MMHD)
	SFLA(DHMM)	6.0000	
-150.0	0.0	0.0	0.0

FILE 102 11-NOV-84 14:25  
 DATA ACQUIRED 11-NOV-84 14:13



FILE 102 11-NOV-84 14:20  
 DATA ACQUIRED 11-NOV-84 13:43

SP (MV)	ILD (DHMM)	30.000	CILD(MMHD)
	SFLA(DHMM)	6.0000	
-150.0	0.0	0.0	0.0

SENSOR MEASURE POINT TO TOOL ZERO

CBL	43.9	FEET	AMPL	43.9	FEET
TT3	40.1	FEET	TT4	39.1	FEET
TT1	42.9	FEET	TT2	43.9	FEET
CALI	31.8	FEET	SRAT	41.4	FEET
SFL	6.4	FEET	ILD	9.4	FEET
SP	2.5	FEET	ILM	5.7	FEET
TENS	2.5	FEET	SPAR	2.5	FEET
MOIS	35.6	FEET			

PARAMETERS

NAME	VALUE	UNIT	NAME	VALUE	UNIT
HSV1	WF1		DWS	16	
DSIM	5	US	DDEL	200	US
CDTS	100.000		DWCL	512	
DTF	189.000	US/F	DSEC	56.0000	US/F
SBR	1.00000	DHMM	MSEC	7.60000	MMHD
FPHI	SPHI		BHS	OPEN	
BS	7.87500	IN	DD	0.0	F
PP	NORM				