

2" BHC SONIC



REINHOLD ENERGY CORPORATION

WELL: "POLAK" #31-12

FIELD: MIST
 COUNTY: COLUMBIA
 STATE: OREGON
 NATION: U.S.A

LOCATION: N 1/4 CORNER OF 424.01'S FROM
 1160-61'E

SECT: 12 TWP: 6N RGE: 5M

PERMANENT DATUM: GL
 ELEV. OF PERM. DATUM: 1140.3 F

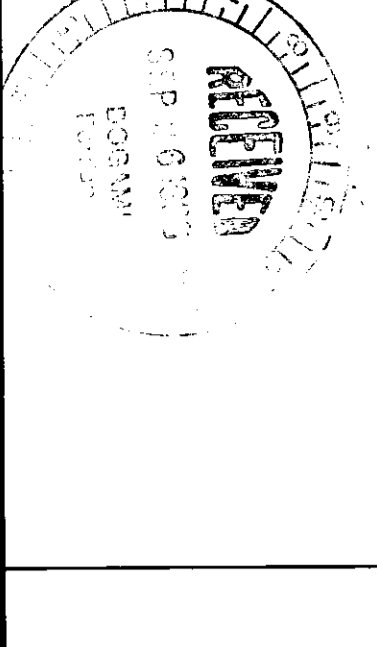
LOG MEASURED FROM: KB
 11.4 F ABOVE PERM. DATUM

DRLG. MEASURED FROM: KB
 GL: 1140.3 F

DATE: 11 NOV 84

RUN NO: 1

DEPTH-DRILLER: 2750.0 F
 DEPTH-LOGGER: 2791.0 F
 T.M. LOG INTERVAL: 2709.0 F
 DP LOG INTERVAL: 632.0 F
 ASING-DRILLER: 632 F
 ASING-LOGGER: 632 F
 ASING: 8 3/8"
 BIT SIZE: 7 7/8"
 BIT DEPTH: 2750 F



OTHER SERVICES-
 DDL
 HDI

PROGRAM
 TAPE NO:
 26.2
 SERVICE
 ORDER NO:
 432292

TYPE FLUID IN HOLE: GEL/LIGNO
 DENSITY: 8.7 LB/G
 VISCOSITY: 50.5 S
 PH: 7.2 C3
 FLUID LOSS: FLOWLINE
 SOURCE OF SAMPLE: 4.340 OHMM AT 62.0 DEGF
 RMF: 5.090 OHMM AT 52.0 DEGF
 RMC: 5.300 OHMM AT 52.0 DEGF
 SOURCE RMF/RMC: MEASURED/MEASURED
 RM AT BHT: 2.879 OHMM AT 97.0 DEGF
 RMC AT BHT: 2.887 OHMM AT 97.0 DEGF
 RMC AT BHT: 3.006 OHMM AT 97.0 DEGF

TIME CIRC. STOPPED: 05:30 11-11
 TIME LOGGER ON BTM.: 13:45 11-11

MAX. REC. TEMP: 97.0 DEGF

LOGGING UNIT NO: 8128
 LOGGING UNIT LOC: SACRAMENTO
 RECORDED BY: PILCH
 WITNESSED BY: ALGER

REMARKS:
 CEDAR CHIPS USED AS LOST CIRCULATION MATERIAL.
 300 PPM CHLORIDES.

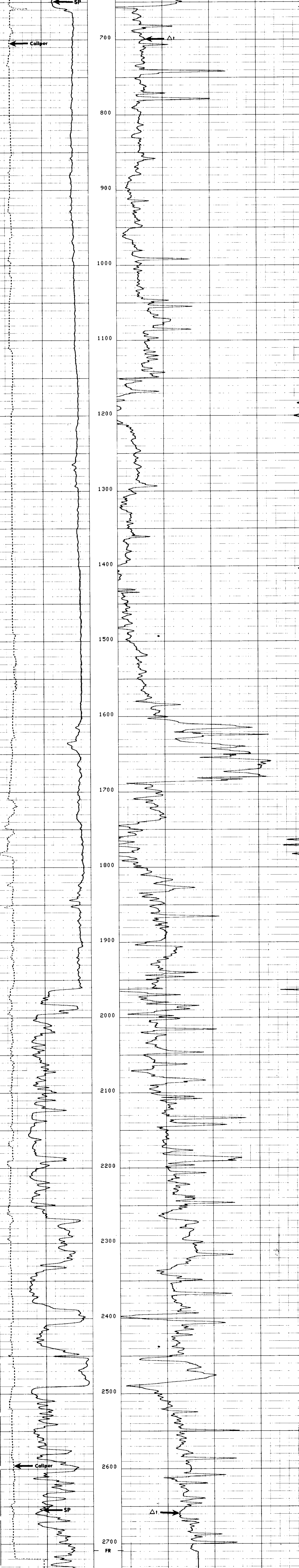
EQUIPMENT NUMBERS-
 DIS-EC 567 DIC-DA 658 SLS-RC 525 SLC-FA 468
 MCD-DA 1237 IEM-BD 304 SLM-CA 138

ALL INTERPRETATIONS ARE OPINIONS BASED ON INFERENCES FROM ELECTRICAL OR OTHER MEASUREMENTS AND WE CANNOT, AND DO NOT GUARANTEE THE ACCURACY OR CORRECTNESS OF ANY INTERPRETATIONS, AND WE SHALL NOT, EXCEPT IN THE CASE OF GROSS OR WILLFUL NEGLIGENCE ON OUR PART, BE LIABLE OR RESPONSIBLE FOR ANY LOSS, COSTS, DAMAGES OR EXPENSES INCURRED OR SUSTAINED BY ANYONE RESULTING FROM ANY INTERPRETATION MADE BY ANY OF OUR OFFICERS, AGENTS OR EMPLOYEES. THESE INTERPRETATIONS ARE ALSO SUBJECT TO OUR GENERAL TERMS AND CONDITIONS AS SET OUT IN OUR CURRENT PRICE SCHEDULE.

FILE 103 11-NOV-84 14:36
 DATA ACQUIRED 11-NOV-84 14:13

CALI(IN) 6.0000 16.000
 SP (MV) -150.0 0.0 DT (US/F) 150.00 50.000

FILE 102 11-NOV-84 14:25
 DATA ACQUIRED 11-NOV-84 14:13



FILE 102 11-NOV-84 14:20
 DATA ACQUIRED 11-NOV-84 13:43

CALI(IN) 6.0000 16.000
 SP (MV) -150.0 0.0 DT (US/F) 150.00 50.000

SENSOR MEASURE POINT TO TOOL ZERO

CBL	43.9	FEET	AMPL	43.9	FEET
TT3	40.1	FEET	TT4	39.1	FEET
TT1	42.9	FEET	SRAT	43.9	FEET
CALI	31.8	FEET	TRT2	41.4	FEET
SFL	6.4	FEET	ILD	9.4	FEET
SP	2.5	FEET	ILM	5.7	FEET
TENS	2.5	FEET	SPAR	2.5	FEET
NDIS	35.6	FEET			

PARAMETERS

NAME	VALUE	UNIT	NAME	VALUE	UNIT
HSV1	WF1		DWS	16	
DSIN	5	US	DDEL	200	US
CDTS	100.000		DHCO	512	
DTF	189.000	US/F	DTM	56.0000	US/F
SBR	1.00000	OHMM	DSEC	7.00000	MMHO
FFHI	SPHI		MSEC	7.60000	MMHO
RS	7.82500	IN	BSEC	OPEN	