



COMPENSATED
ACOUSTIC VELOCITY
LOG

COMP. CHAPLIN PETROLEUM CORP.
WELL NO. 1 BUCKETT 13-28
FIELD CLATSOP
COUNTY COLUMBIA ST. OREGO
OTHER SERVICES

COMPANY CHAPLIN PETROLEUM CORPORATION
WELL NO. 1 BUCKETT 13-28
FIELD CLATSOP
COUNTY COLUMBIA STATE OREGON
FPI NO. LOCATION N/A
DATE 08-28-84
ELEV. K.B. 19.28
D.F. 12.28
C.L. 0.28
ELEV. K.B. 19.28
D.F. 12.28
C.L. 0.28

PERFORMED AT
LOG RECORDED FROM K.B.
DRILLING RECORDED FROM K.B.
DATE 08-28-84
RUN NO. ONE
DEPTH-STARTER 511
DEPTH-ENDER 500
TOP LOG INTER. 28
BOTTOM-DRILLER N/A
CRIMING-BELLY N/A

BIT SIZE 12 1/4"
TYPE FLUID IN HOLE WATER BRINE
DENS. I. VISC. 9.1 I. 288
PH. I. FLUID LOSS 9.5 I. 9.8 NL
SOURCE OF SAMPLE CIRCULATED
RN & WBS TEMP. 4.8 8 88 F
RNC & WBS TEMP. 4.4 8 72 F
RNC & WBS TEMP. 3.5 8 68 F
SOURCE RFG. RNC. WBS. I. WBS. I.
FPI & BHT 1/2 8 80 F
TIME SINCE CIRC. 1 HOUR
TIME ON BOTTOM 12:00 PM
MAX. WBS. TEMP. 88 74 BHT
EQUIP. LOCATION 2889 I. WELD
RECORDED BY R.E. ODELLERT
FILMED BY RICE/KRINCHER

FOLD HERE

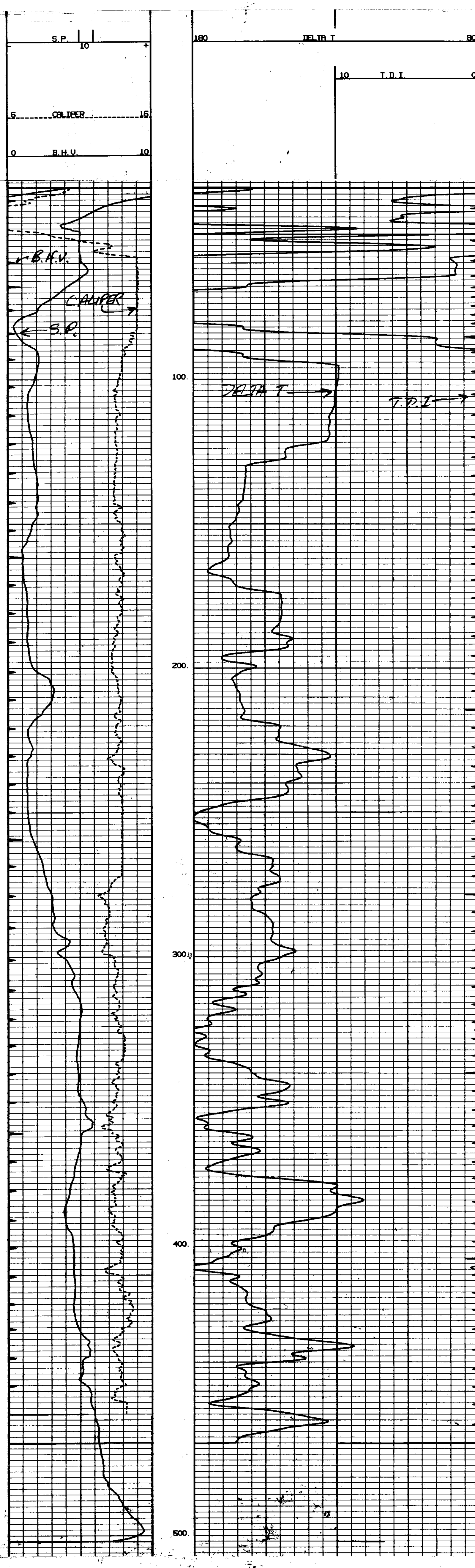
SERVICE TICKET NO.: 153981 FPI SERIAL NO.: PCN VERSION: V1.78 3/15/84

EQUIPMENT DATA			
GRAND	ACOUSTIC	DENSITY	NEUTRON
RUN NO.	RUN NO.	RUN NO.	RUN NO.
SERIAL NO.	SERIAL NO.	SERIAL NO.	SERIAL NO.
MODEL NO.	MODEL NO.	MODEL NO.	MODEL NO.
DIAMETER	NO. OF CENT.	DIAMETER	DIAMETER
DETECTOR MODEL NO.	SPACING	LOG TYPE	LOG TYPE
TYPE	LENGTH	SOURCE TYPE	SOURCE TYPE
DISTANCE TO SOURCE	FWDR	YES NO SERIAL NO.	SERIAL NO.
		YES NO STRENGTH	STRENGTH

LOGGING DATA												
GENERAL			GRAND		ACOUSTIC		DENSITY		NEUTRON			
RUN NO.	DEPTH	SPEED	SCALE		SCALE		SCALE		SCALE			
NO.	FROM	TO	L	R	L	R	L	R	MATRIX	L	R	MATRIX
ONE	511	35			100	80						

REMARKS:

MELEX DOES NOT GUARANTEE THE ACCURACY OF ANY INTERPRETATION OF LOG DATA, CONVERSION OF LOG DATA TO PHYSICAL ROCK PARAMETERS, OR RECOMMENDATIONS WHICH MAY BE GIVEN BY MELEX PERSONNEL OR WHICH MAY APPEAR ON THE LOG OR IN ANY OTHER FORM. ANY USER OF SUCH DATA, INTERPRETATIONS, OR CONVERSIONS, OR RECOMMENDATIONS AGREES THAT MELEX IS NOT RESPONSIBLE, EXCEPT WHERE DUE TO GROSS NEGLIGENCE OR WILLFULL MISCONDUCT FOR ANY LOSS, DAMAGES, OR EXPENSES RESULTING FROM THE USE THEREOF.



REPEAT SECTION

