



**DIP LOG CALCULATIONS**

2" 100'

COMPANY CHAMPLIN PETROLEUM COMPANY  
 WELL NO. 1 PUCKETT 13-36  
 FIELD DIKELAND  
 COUNTY COLUMBIA STATE OREGON  
 LOCATION NORTH 8 800' EAST OF THE 101/105N SOUTHWEST CORNER 01-14-8-M. 1/4 SECTION 36 Twp. 8N R. 14W  
 PERMIT NO. 11-4  
 DRILLER K.B. WELLEX  
 LOGGERS K.B. WELLEX  
 DATE 7-17-52  
 TIME 8:45-9:44  
 DEPTH 5720  
 TYPE FLUID LIQUID  
 DENS. 1.26 @ 126 F  
 VISC. 1.84 @ 126 F  
 R.M. @ MEAS. TEMP. 33 @ 126 F  
 R.M. @ BHT 50 @ 126 F  
 SOURCE R.M. 200 @ 200 F  
 SOURCE BHT 200 @ 200 F  
 EQUIP. 1 LOCATION 2890 I WOODLAND  
 OPERATED BY GIBBY

Service Ticket No. 452293 Remarks: S.W. STATE DIP-METER 552.

Charge in Mast Type or Additional Samples	Run No.	DIP	2	3	4
Date - Sample No.	Tool Type	Tool Number	6420		
Depth - Driller	Tool Type	Tool Number	FORXO		
Type Fluid in Hole	Correlated By				
Dens. / Visc.	Computed By				
pH / Fluid Loss	Remarks:				
Source of Sample					
R.M. @ Meas. Temp.					
R.M. @ Meas. Temp.					
Source R.M.					
R.M. @ BHT					
R.M. @ BHT					
R.M. @ BHT					

R.M.C. WELLEX does not guarantee the accuracy of any interpretation of log data, nor does it warrant the accuracy of any data or information provided in this log. It is the responsibility of the user to verify the accuracy of any data or information provided in this log. Any use of such data, interpretations, comments, or recommendations without the written consent of WELLEX is not responsible, except where due to gross negligence or willful misconduct. For any loss, damage, or expense from the use thereof.

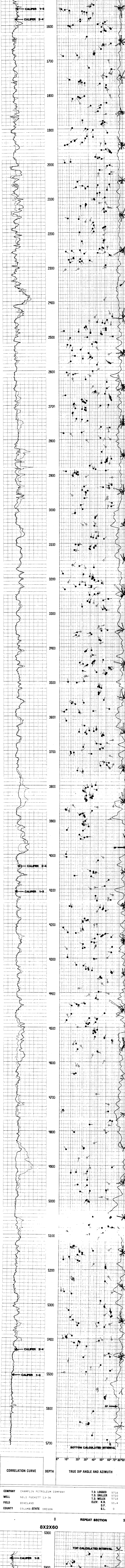
Magnetic Declination NORTH 20° EAST

TABLE OF CONSTANTS FOR DETERMINING VERTICAL DIFFERENCE AT VARIOUS DIP ANGLES

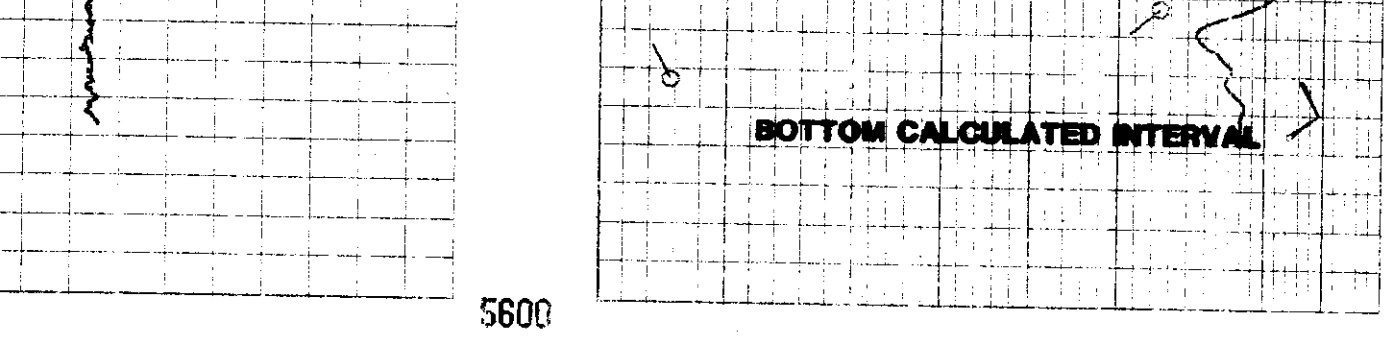
DIP ANGLES Degrees	CONSTANT	DIP ANGLES Degrees	CONSTANT	DIP ANGLES Degrees	CONSTANT	DIP ANGLES Degrees	CONSTANT
1	.0175	11	.194	21	.384	35	.700
2	.035	12	.213	22	.404	40	.859
3	.052	13	.231	23	.425	45	1.000
4	.070	14	.249	24	.445	50	1.192
5	.088	15	.268	25	.466	55	1.428
6	.105	16	.287	26	.487	60	1.732
7	.123	17	.306	27	.509	65	2.144
8	.141	18	.325	28	.531	70	2.748
9	.158	19	.344	29	.554	75	3.732
10	.176	20	.364	30	.577	80	5.671

Vertical difference in feet is obtained by multiplying the constant for any given dip angle by the horizontal distance in feet.  
 Example: Dip angle 10°. Horizontal distance 440 ft.  
 Vertical difference = 176 x 440 = 77.44

**GRAPHIC PRESENTATION**



COMPANY	CHAMPLIN PETROLEUM COMPANY	T.D. LOGGED	5716
WELL	NO.1 PUCKETT 13-36	T.D. DRILLER	5720
FIELD	DIKELAND	T.D. WELLEX	5718
COUNTY	COLUMBIA STATE OREGON	ELEV. K.B.	11.4
		D.F.	0
		G.L.	0



8X2X60