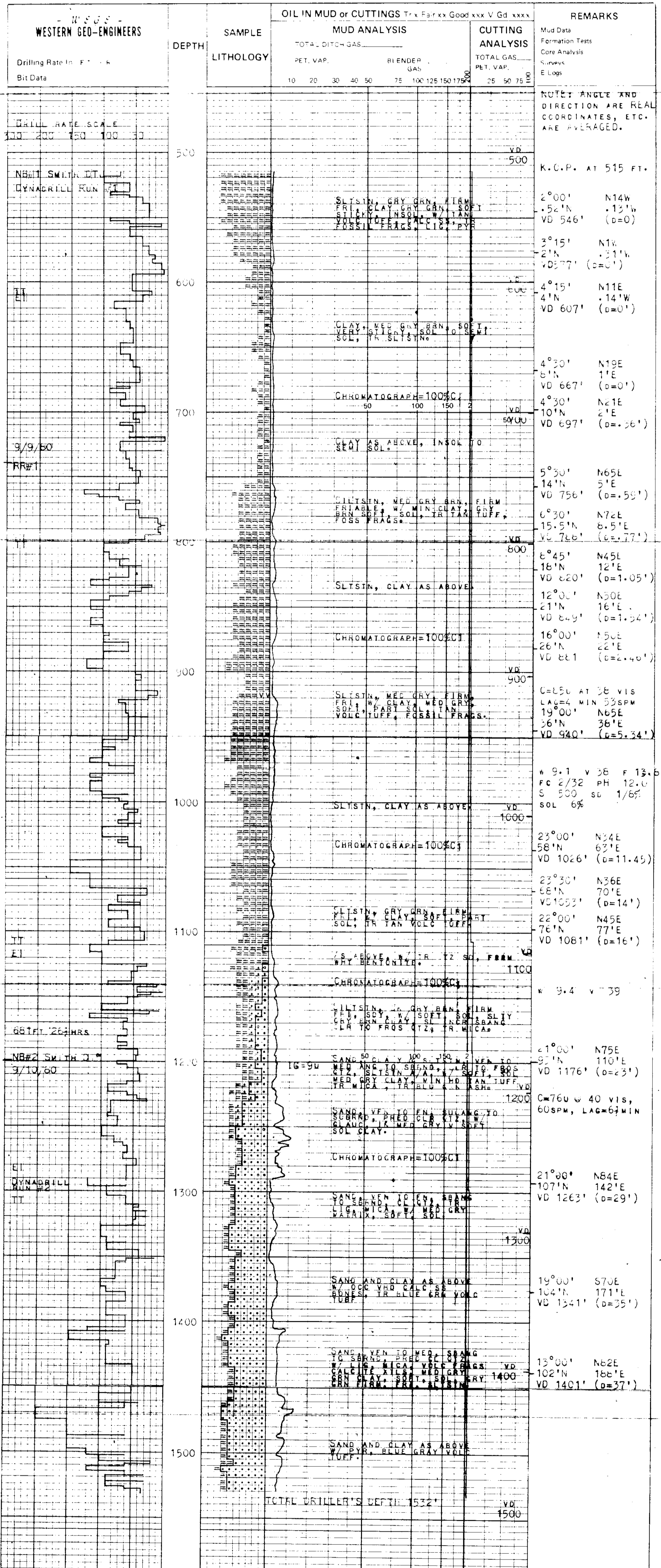


WELL RAU 16-14 RD#1 COMPANY AMERICAN OIL & GAS COMPANY AREA MIST BEHALEM BASIN LOCATION 5.00' N & 100.41' E OF W. CORN. SEC 16; T6N; R4W COUNTY, STATE COLUMBIA, OREGON	- WEGE - WESTERN GEO-ENGINEERS "A SERVICE TO THE OIL AND GAS INDUSTRY"	REMARKS WELL ELEV. GL. 500' SALINITY IN F.W. 0.0 FILTRATE IN CC/10 MIN. 0 GAS TRAP/CITATION TYPE 0 MUD - FICONSULFONATE (L-ANION) PAUL GRAYMAN 16-14
MUD DATA W WEIGHT V VISCOSITY F FILTRATE FC FILTER CAKE SD SAND IN %		LITHOLOGY SYMBOLS
LEGEND S SALINITY R RESISTIVITY RF FILTRATE RESISTIVITY BIT DATA NB NEW BIT RRB RERUN BIT		OTHER DATA CB CORE BIT WLCB WIRE LINE CB TG TRIP GAS CG CONNECTION GAS C CARBIDE GAS CR CIRCULATE RETURNS NR NO RETURN DST DRILL STEM TEST [] DST INTERVAL [] CORE INTERVAL
DATE 9/8/60 to 9/14/60 DEPTH 15' to 1532' ENGINEERS WEGE		CASING 7" TO 515' TO TO



AMERICAN OIL & GAS COMPANY. RAU 16 14 RD#1, SEC. 16; T6N; R4W; MIST BEHALEM BASIN, COLUMBIA CO., ORE.