

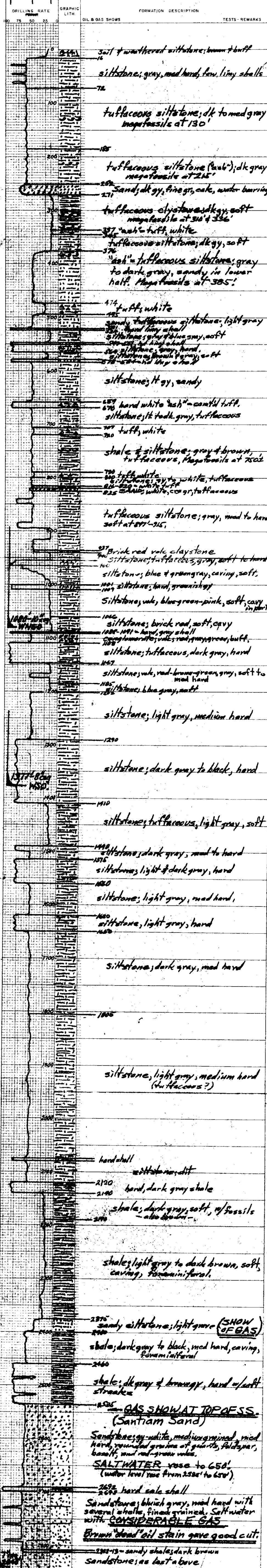
FORMATION LOG

EXPLORATION - GULF OIL CORPORATION

Sec. 14 T. 9S R. 3W WIRE M
 County Marion State Oregon
 COMPANY PORTLAND GAS.
 Well Steiwer - 1

COMPANY **PORTLAND GAS & COKE CO.**
 WELL **Steiwer - #1**
 LOCATION Sec 14 - T. 9S - R. 3W. W. B. E. M.
 1580'S, 400'E from NW cor. Sec. 14
 COUNTY **Marion**
 STATE **Oregon**
 SPUD 5/9/33 COMP/ABND. 9/5/35 top. 300' TD. 2845'

P.S. Day well file 2/8/62
 Well file contains drillers log and graphic log by Chas. B. Henry.
 Drilled on structure mapped by C.S.B. Henry, 1930-32.
 Drilled with cable tools.



PORTLAND GAS & COKE CO.
 Steiwer - 1
 Sec. 14 - T. 9S - R. 3W