

**FILE NO. 2961**  
**COMPANY: ARCO OIL & GAS COMPANY**  
**WELL: STERLING NO. 12-24-66 (REDRILL)**  
**FIELD: HSI**  
**COUNTY: DALLAS**  
**STATE: TX**

**LOG DATE: 11/12/88**  
**LOG TIME: 5:40:11**  
**LOG BY: HSI**  
**LOG NO: 0212L**  
**FILE: 3**  
**DATE: 11/12/88**  
**TIME: 5:40:11**  
**MODE: PLAYBACK**

**LOG NO: 0212L**  
**FILE: 3**  
**DATE: 11/12/88**  
**TIME: 5:40:11**  
**MODE: PLAYBACK**

**LOG NO: 0212L**  
**FILE: 3**  
**DATE: 11/12/88**  
**TIME: 5:40:11**  
**MODE: PLAYBACK**

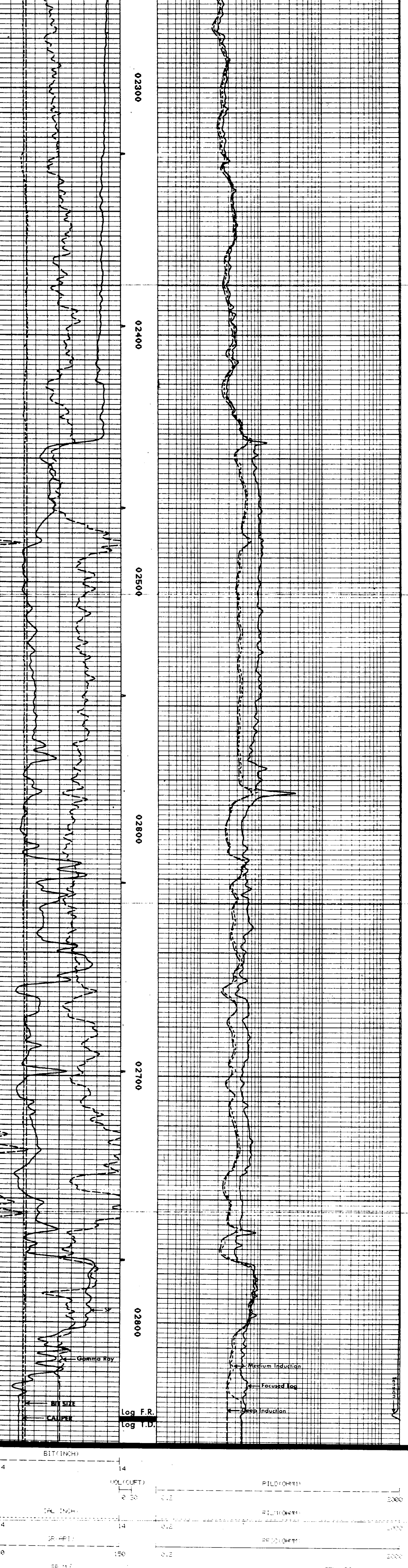
**REMARKS RUN ( 1 )**

**EQUIPMENT DATA**

RUN (TRIP)	TOOL	SERIAL NO.	SERIES NO.	POSITION
1	OILFL	34284	1543	FREE
1	GR	58484	138	CENT
1	GR	4222	402	LOG

COMPANY: ARCO OIL & GAS COMPANY  
 WELL NAME: STERLING NO. 12-24-66 (REDRILL)  
 SERVICE: KC212L  
 REVISION: FS/SAL REV 0508 VER=2

LOG NO: 0212L  
 FILE: 3  
 DATE: 11/12/88  
 TIME: 5:40:11  
 MODE: PLAYBACK

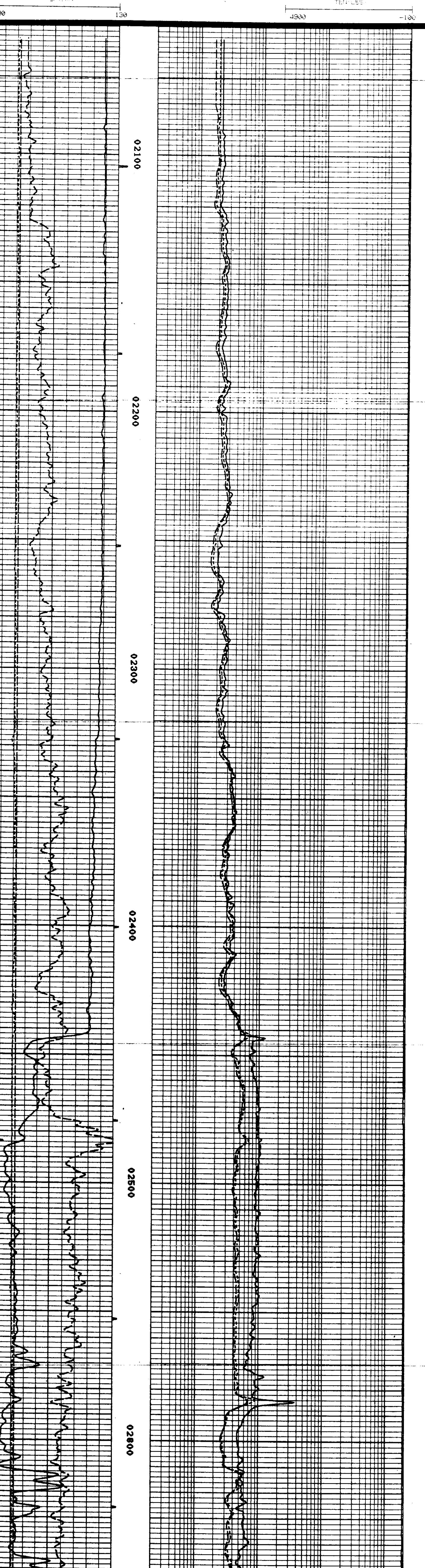


**PARAMETERS**

NAME	DEPTH	INTERVAL	VALUE	UNITS
O.D.	2847	TO 2056	3.500	INCH

COMPANY: ARCO OIL & GAS COMPANY  
 WELL NAME: STERLING NO. 12-24-66 (REDRILL)  
 SERVICE: FS/SAL REV 0508 VER=2

LOG NO: 0212L  
 FILE: 1  
 DATE: 11/12/88  
 TIME: 5:40:11  
 MODE: PLAYBACK



**PARAMETERS**

NAME	DEPTH	INTERVAL	VALUE	UNITS
O.D.	2847	TO 2056	3.500	INCH

COMPANY: ARCO OIL & GAS COMPANY  
 WELL NAME: STERLING NO. 12-24-66 (REDRILL)  
 SERVICE: FS/SAL REV 0508 VER=2

LOG NO: 0212L  
 FILE: 1  
 DATE: 11/12/88  
 TIME: 5:40:11  
 MODE: PLAYBACK

**LOG NAME: CILF ASSET NO. 3334 UNIT NO. 6406**  
**CALIBRATION ENTERED ON 11/07/88 AT 20:27:10**

CURVE	MILLIVOLTS	SCALING FACTORS	ENGINEERING VALUES	UNITS
CILD	1.3 484.5	-0.364	0.500	500.000 MHO
CILM	-2.0 504.5	2.349	0.500	500.000 MHO
CFOC	3.2 497.6	-2.240	1.000	506.403 MHO

**DATE 10/06/88 CALIBRATION TIME 12:07:06**

CURVE	MILLIVOLTS	SCALING FACTORS	ENGINEERING VALUES	UNITS
CILD	-0.2 485.4	-0.364	0.500	501.525 MHO
CILM	0.0 504.5	2.349	0.500	497.075 MHO
CFOC	4.5 504.0	-2.240	2.4626	506.403 MHO

**DATE 10/06/88 PRIMARY VERIFICATION TIME 12:09:42**

CURVE	MILLIVOLTS	SCALING FACTORS	ENGINEERING VALUES	UNITS
CILD	-0.2 485.4	-0.364	-1.131	501.525 MHO
CILM	0.0 504.5	2.349	2.4626	497.075 MHO
CFOC	4.5 504.0	-2.240	2.4626	506.403 MHO

**DATE 11/08/88 BEFORE LOG VERIFICATION TIME 00:34:01**

CURVE	MILLIVOLTS	SCALING FACTORS	ENGINEERING VALUES	UNITS
CILD	0.0 498.8	-1.159	-1.131	501.525 MHO
CILM	-0.1 512.2	2.441	2.430	497.075 MHO
CFOC	4.5 480.4	-2.421	2.331	506.403 MHO

**DATE 11/08/88 AFTER LOG VERIFICATION TIME 01:56:18**

CURVE	MILLIVOLTS	SCALING FACTORS	ENGINEERING VALUES	UNITS
CILD	0.0 497.5	-1.159	-1.134	499.903 MHO
CILM	-0.1 505.0	2.441	2.378	494.490 MHO
CFOC	4.5 498.1	-2.421	2.343	506.015 MHO

**LOG NAME: GR ASSET NO. 68484P UNIT NO. 6406**  
**CALIBRATION ENTERED ON 11/07/88 AT 00:18:22**

CURVE	COUNTS-SEC	SCALING FACTORS	ENGINEERING VALUES	UNITS
GR	33.7 250.4	0.000	0.000	150.000 API

**DATE 11/07/88 CALIBRATION TIME 00:18:22**

CURVE	COUNTS-SEC	SCALING FACTORS	ENGINEERING VALUES	UNITS
GR	33.7 250.4	0.000	0.000	150.000 API

**DATE 11/08/88 BEFORE LOG VERIFICATION TIME 02:00:04**

CURVE	COUNTS-SEC	SCALING FACTORS	ENGINEERING VALUES	UNITS
GR	66.1 230.2	0.000	0.6921	45.715 200.888 API

**LOG NAME: CIL ASSET NO. 73000 UNIT NO. 6406**  
**CALIBRATION ENTERED ON 11/07/88 AT 20:15:23**

CURVE	MILLIVOLTS	SCALING FACTORS	ENGINEERING VALUES	UNITS
CIL	3428.6 7831.6	1.391	0.0093	6.000 12.000 INCH

**DATE 11/07/88 CALIBRATION TIME 20:15:23**

CURVE	MILLIVOLTS	SCALING FACTORS	ENGINEERING VALUES	UNITS
CIL	3428.6 7831.6	1.391	0.0093	6.000 12.000 INCH

**DATE 11/08/88 BEFORE LOG VERIFICATION TIME 01:54:44**

CURVE	MILLIVOLTS	SCALING FACTORS	ENGINEERING VALUES	UNITS
CIL	3717.9	1.391	0.0093	6.188 11.4 INCH

**DATE 11/08/88 AFTER LOG VERIFICATION TIME 01:54:44**

CURVE	MILLIVOLTS	SCALING FACTORS	ENGINEERING VALUES	UNITS
CIL	3602.0	1.391	0.0093	6.592 11.4 INCH