

**COMPANY** MOBIL OIL CORPORATION  
**WELL** SUTHERLIN UNIT NO. 1  
**FIELD** WILDCAT  
**COUNTY** DOUGLAS STATE OREGON  
**LOCALITY** 4.55, 7 SOUTH & 2061, 6 EAST FROM THE WEST E. CORNER OF SECTION 36 T.24S. R.24E. S.11E.

**Permanent Datum:** GS  
**Log Measured from:** K8  
**Logging Method:** C-23, 7/8  
**Date:** 6-23-78  
**Run No.:** ONE  
**Depth (feet):** 3587  
**Bottom Log Interval:** 8560 @ 1353  
**Top Log Interval:** 1353 @  
**Coring Depth:** 122.0'

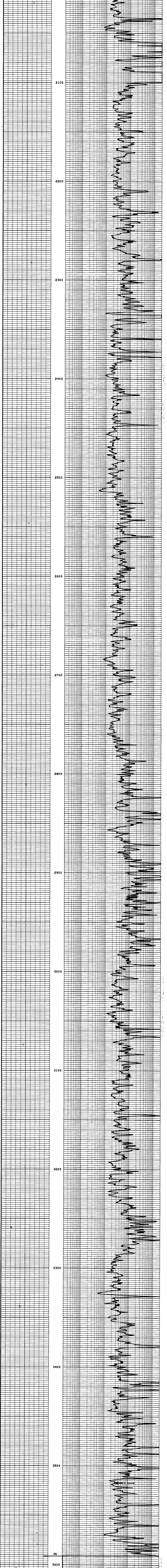
**Scale Changes:** Type Log \_\_\_\_\_ Scale Up Hole \_\_\_\_\_ Scale Down Hole \_\_\_\_\_  
**Log Interval:** 36 245 50  
**Log Type:** HRT HRT HRT HRT HRT  
**Log Name:** FDC/CNL/GR

**Run No.** ONE  
**Service Order No.** 48038  
**API Serial No.** FULL  
**Fluid Level:**

**EQUIPMENT DATA:** FDC/CNL/GR  
**REMARKS:**

**CALIBRATION DATA:**  
 Speed - F.P.M. \_\_\_\_\_  
 BKG. CPS \_\_\_\_\_  
 Source CPS \_\_\_\_\_  
 GR \_\_\_\_\_  
 Tc \_\_\_\_\_

All interpretations are opinions based on inferences from electrical or other measurements and we cannot and do not guarantee the accuracy or correctness of any interpretation, and we shall not except in the case of gross or willful negligence on our part, be liable or responsible for any loss, cost, damages or expenses incurred or sustained by others resulting from any interpretation made by any of our officers, agents or employees. These interpretations are also subject to Clause 4 of our General Terms and Conditions set out in our current Price Schedule.



**COMPANY** MOBIL OIL CORPORATION  
**WELL** SUTHERLIN UNIT NO. 1  
**FIELD** WILDCAT  
**COUNTY** DOUGLAS STATE OREGON

**Rm** .816 @ 76 °F  
**Rmf** .285 @ 69 °F  
**Rmc** 1.52 @ 77 °F  
**BHT** 99 °F

**SCHL FR** 3587  
**SCHL TD** 3589  
**DLR TO** 3624  
**Elev.** KB 511  
**DF** -  
**GL** 488