

Continental Line 1



ISF / SONIC

COMPANY MOBIL OIL CORPORATION

WELL SUTHERLIN UNIT NO. 1

FIELD WILDCAT

COUNTY DOUGLAS STATE OREGON

LOCATION 455.7' SOUTH & 2064.6' EAST FROM THE WEST CORNER OF SECTION 36 T24S R23E S4

Other Services: DIL, BHC, HRT, BGT, F-CURVE

Permanent Datum: U.L. Elev.: 488

Log Measured From: K.I. Elev.: 23 Ft. Above Perm. Datum

Drilling Measured From: K.I. Elev.: 498

Date: 9-22-78

Run No.: ONE

Depth-Logger: 3634

Btm. Log Interval: 1860

Top Log Interval: 16" @ 1853

Casing-Driller: 1850

Casing-Logger: 1850

Bit Size: 12 1/4

Type Fluid in Hole: LIQUIDUSULFONATE

Dens. Visc.: 20.4 lb./cu. ft. 58

pH: 10.0 @ 16.6 mi

Fluid Loss: CIRCULATED

Source of Sample: .816 @ 76 F

Rm @ Meas. Temp.: .285 @ 68 F

Rnc @ Meas. Temp.: 1.52 @ 77 F

Source Rmt: M

Rm @ BHT: .639 @ 99 F

Circulation Stopped: 4.5 HOURS

Logger on Bottom: 2000

Max. Rec. Temp.: 99 F

Log Location: 7731 SAC

Recorded by: BRASFELLD

Witnessed by: FRIEND

FOLD HERE The well name, location and borehole reference data were furnished by the customer.

RUN NO.		SCALE CHANGES	
Service Order No.	48038	Type Log	Depth
Fluid Level	FULL	Scale Up Hole	Scale Down Hole
Salinity, PPM CL			
Speed - F.P.M.	60		

EQUIPMENT DATA		REMARKS:
Ind. Panel	DD-452	
Ind. Cartridge	DA-100	
Ind. Sonde	EA-83	
Memorizer Panel	CA-293	
Sonic Panel	JH-306	
Sonic Cartridge	EA-380	
Sonic Sonde	QA1289	
Oscil. Panel	-	
G.R. Panel	A-405	
G.R. Cartridge	-	
Caliper	-	
ITR No.	-	

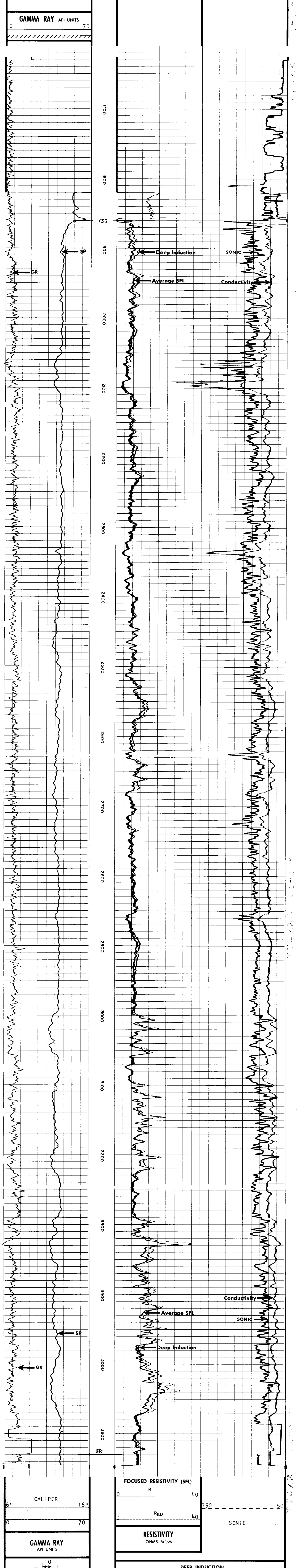
SP RECORDED 1.5' SHALLOW.

CALIPER RECORDED 28.65 FEET DEEP.

CALIBRATION DATA	
Sonde Error	10.2
SBR	1
Corrected - Depth	-
G.R. Background	30
G.R. CPS	270
Time Constant	6

LOGGING DATA	
G.R. Scale	0-70
G.R. T.C.	6
Sonde Error	10.2
SBR	1
LSS (check if run)	-

All interpretations are opinions based on inferences from electrical or other measurements and we cannot, and do not guarantee the accuracy or correctness of any interpretations, and we shall not, except in the case of gross or willful negligence on our part, be liable or responsible for any loss, cost, damages or expenses incurred or sustained by anyone resulting from any interpretation made by any of our officers, agents or employees. These interpretations are also subject to Clause 4 of our General Terms and Conditions as set out in our current Price Schedule.



SPONTANEOUS POTENTIAL		DEPTHS		CONDUCTIVITY	
MILLIVOLTS				MILLIMHOS/M	OHMS M ² /M