

Cement Bond Log
Variable Density

COMPANY	Carbon Energy International	SCHL FR	1542 OF
WELL	WNS Menasha #32-1	DRLR TD	564 OF
FIELD	Wildcat	Elev.	83 OF
COUNTY	Coos	STATE	Oregon
		GL	165 OF
LOCATION	21301 S. & 89th W.		
APR SERIAL NO.	36-011-00206		
LOG MEASURED FROM	18 01		
LOG MEASURED TO	18 01		
LOG MEASURED FROM	18 01		
LOG MEASURED TO	18 01		
LOG MEASURED FROM	18 01		
LOG MEASURED TO	18 01		
LOG MEASURED FROM	18 01		
LOG MEASURED TO	18 01		

The size, name, position and concrete reference data were furnished by the customer.

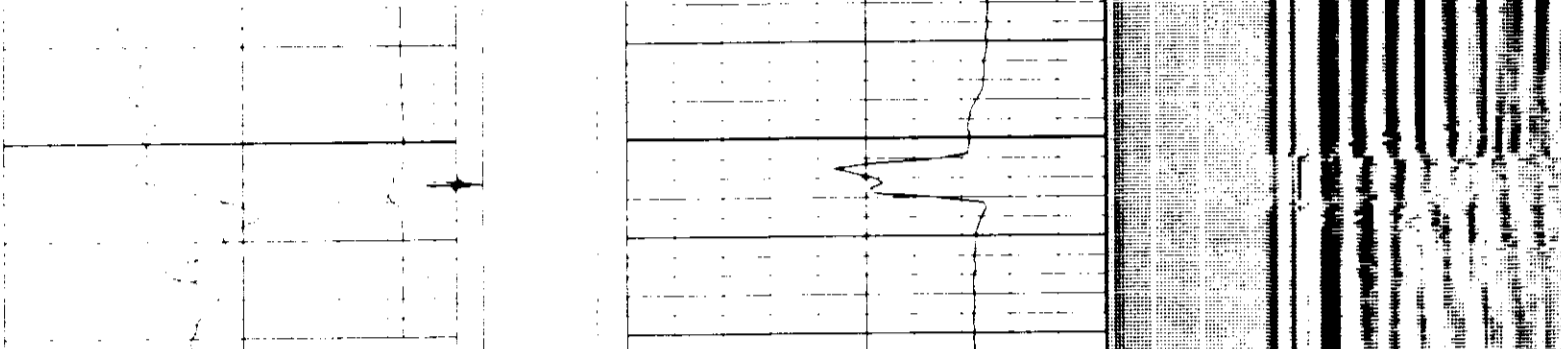
All measurements were based on references from electrical or other measurements and we do not assume responsibility for any inaccuracies or errors that exceed the case of gross or negligent negligence. We are not responsible for any loss, costs, damages or expenses incurred by the customer or others resulting from any interpretations made by any of our officers, agents or employees. These measurements are the property of Schlumberger. Schlumberger assumes no responsibility for the use of these measurements for purposes other than those intended.

Run No.	THREE
Service Order No.	254644
Logging Speed	3600 F/HR

EQUIPMENT DATA	
Tool Number 1	SLS-WA 2012
Tool Number 2	SLS-MA 88
Tool Number 3	SGC-JA 3545
Tool Number 4	CAL-R 1083
Tool Number 5	S.M.-DA 1329
Tool Number 6	N.W.-RC 456
Tool Number 7	
Tool Number 8	
Tool Number 9	
Tool Number 10	
Tool Number 11	
Tool Number 12	

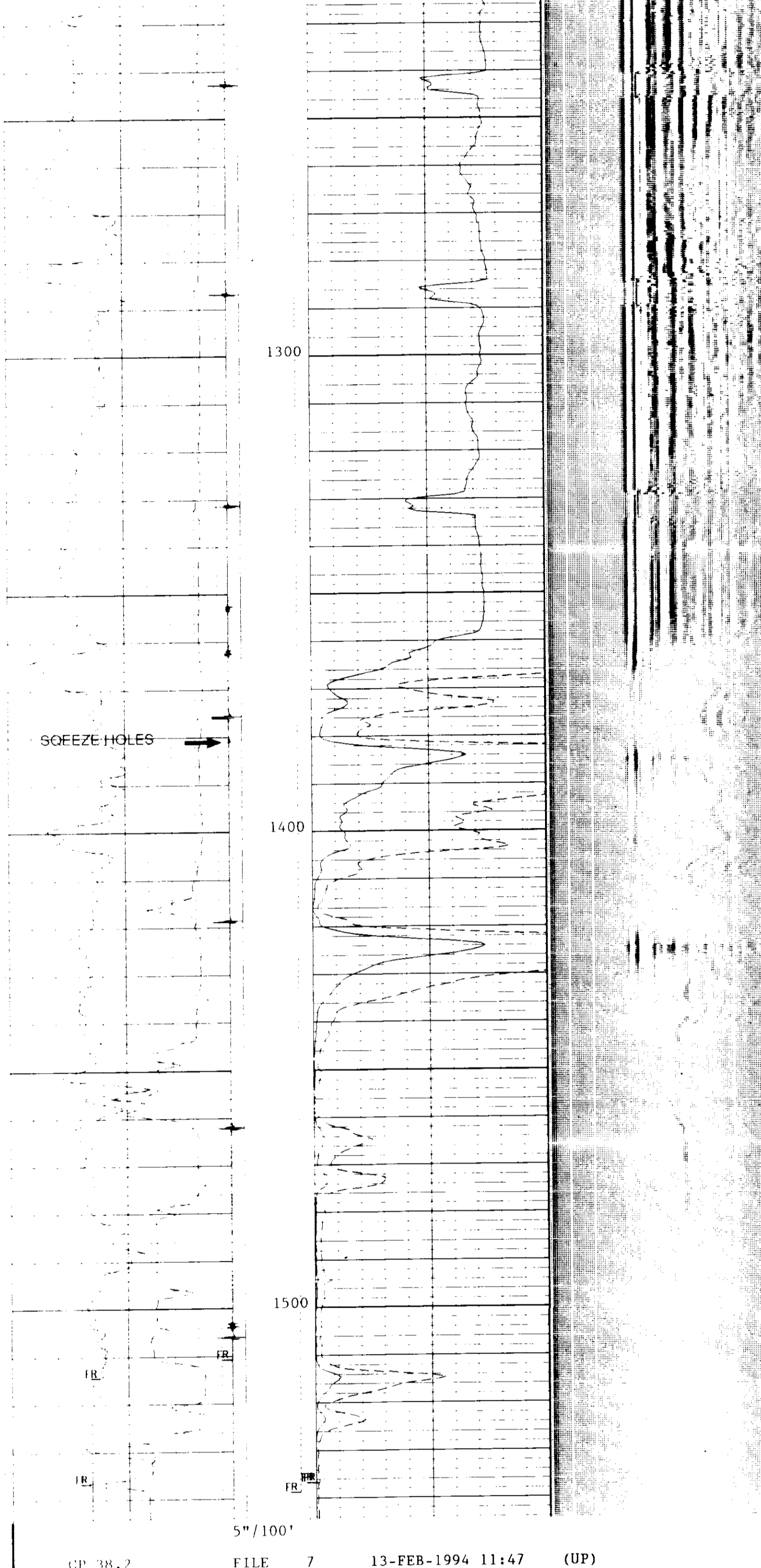
REMARKS: See Well Log WNS-14 JAN 1994

LOGGING TOOL STRING SKETCH

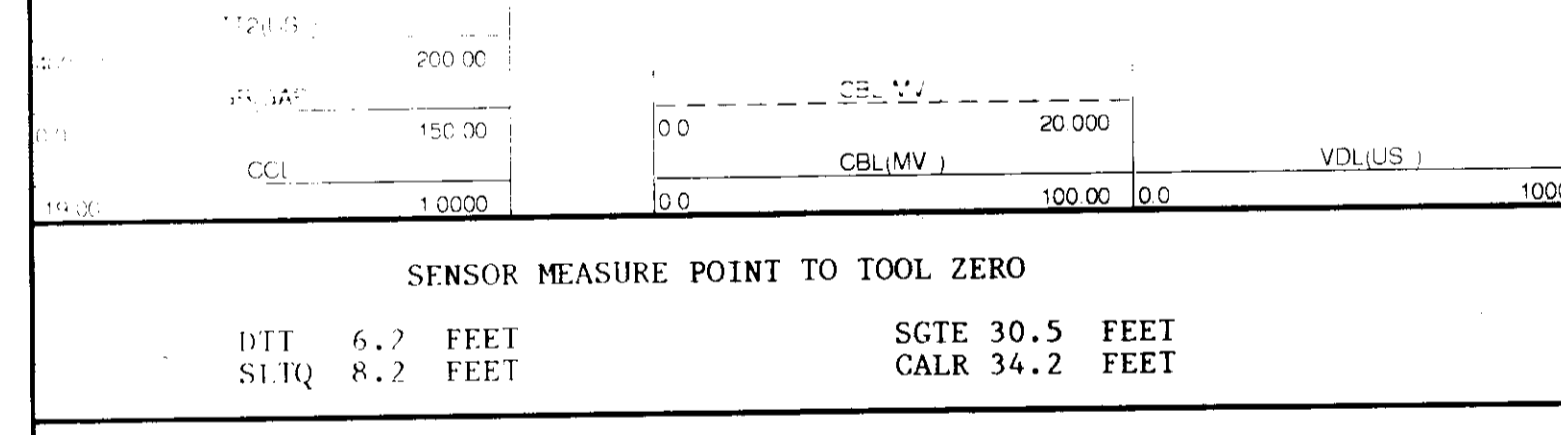


TOTAL TOOL STRING LENGTH IS 37.9 F.
TOTAL TOOL STRING WEIGHT IS 517. LB IN AIR.

Main Log - 0 psi



CP BR. 7 FILE 7 13-FEB-1994 11:57 (UP)

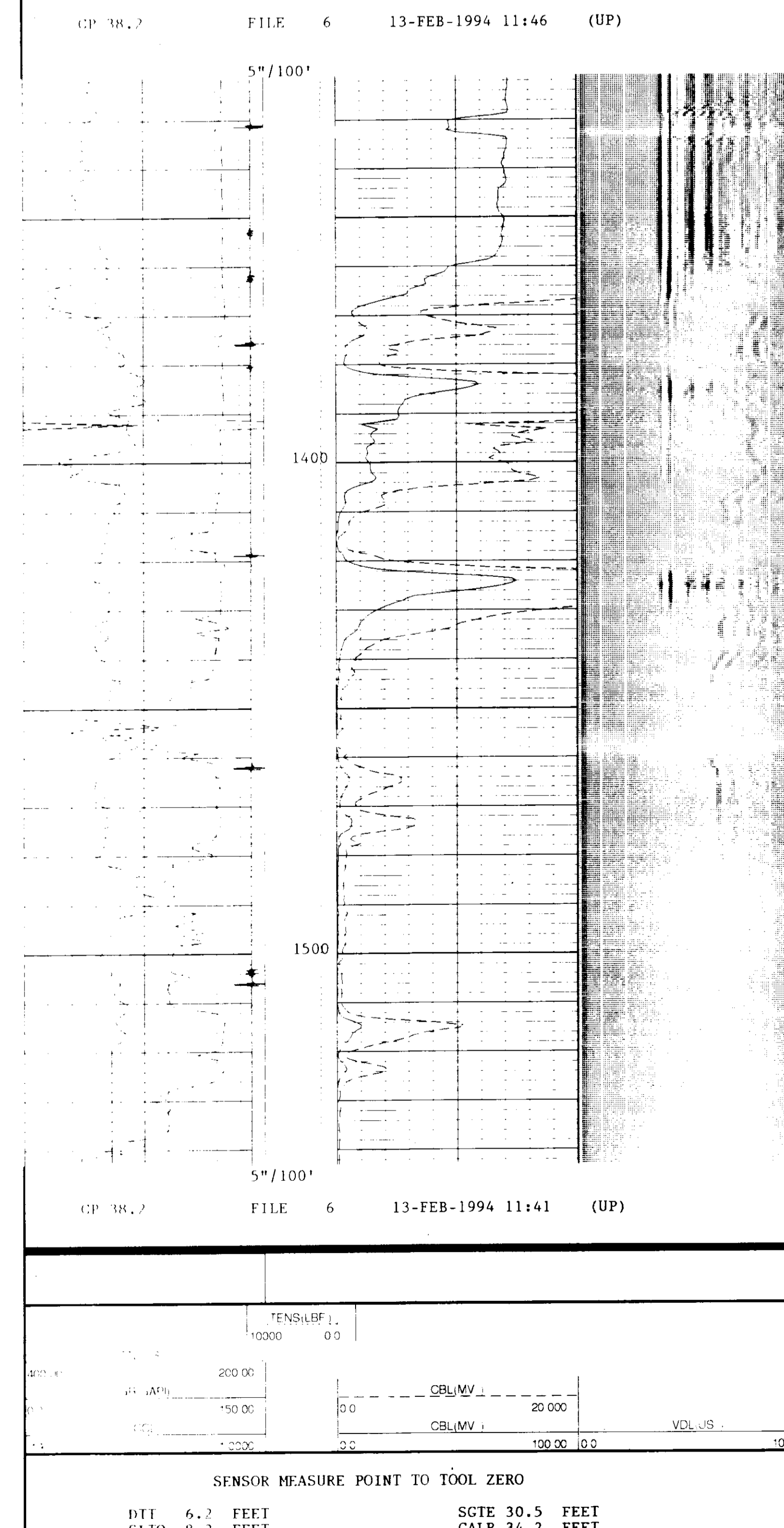


CP BR. 7 FILE 7 13-FEB-1994 11:47 (UP)

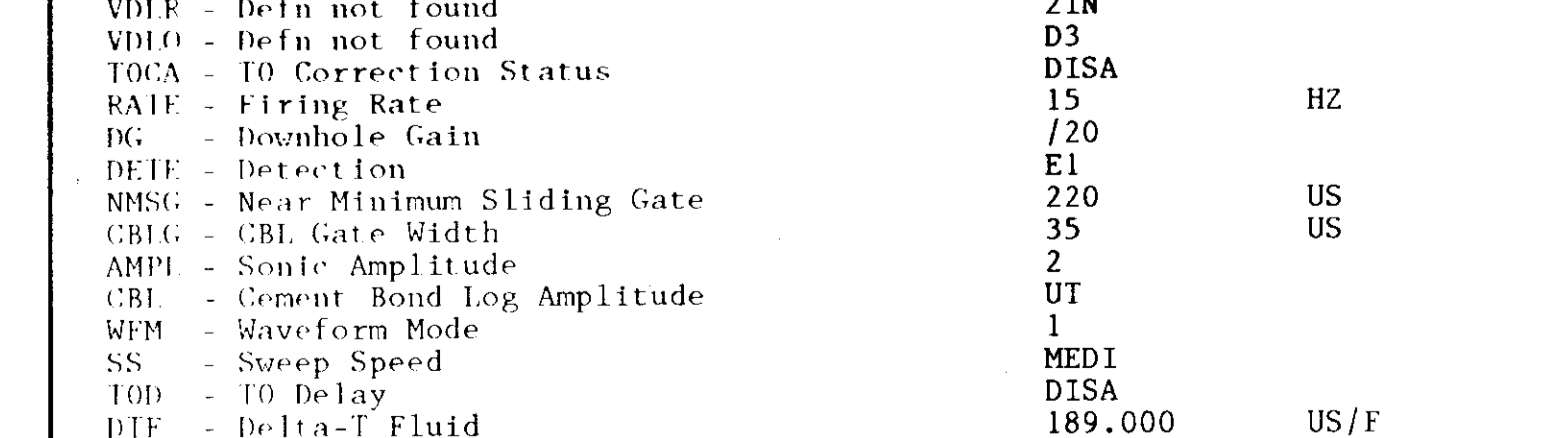
SENSOR MEASURE POINT TO TOOL ZERO
 DIT 6.2 FEET SCGE 30.5 FEET
 SIHQ 8.2 FEET CALR 34.2 FEET

PARAMETER	VALUE	UNIT
SMR - Sonic Memory Board	ALLO	
VDLR - Defn not found	2IN	
VDLO - Defn not found	D3	
TOCA - TO Correction Status	DISA	
RATE - Firing Rate	15	HZ
DG - Downhole Gain	/20	
DETE - Detection	E1	
NMSC - Near Minimum Sliding Gate	220	US
CBIG - CBL Gate Width	35	US
AMPI - Sonic Amplitude	2	
CBL - Cement Bond Log Amplitude	UT	
WFM - Waveform Mode	1	
SS - Sweep Speed	MEDI	
TD - TO Delay	DISA	
DTF - Delta-T Fluid	189.000	US/F
DTM - Delta-T Matrix	56.0000	US/F
CDTS - Correction for Delta-T Shale, Empirical	100.000	
SPFS - Sonic Porosity Formula Select	R-H	
WMBH - Weight of Mud	8.50000	LB/G
NCFH - NCF Calibration Jig Type	GSRV	
CSIR - Compressive Strength of Cement	1000.00	PSIA
CWEI - Casing Weight	11.6000	LB/F
DWCO - Digitizer Word Count	512	
DSIN - Digitizer Sample Interval	5	US
DBEI - Digitizer Delay	200	US
BS - Bit Size	8.75000	IN
BHS - Borehole Status (Open or Cased)	CASE	
CS17 - Casing Size	4.50000	IN

Repeat Section - 0 psi



CP BR. 7 FILE 6 13-FEB-1994 11:46 (UP)



CP BR. 7 FILE 6 13-FEB-1994 11:41 (UP)

SENSOR MEASURE POINT TO TOOL ZERO
 DIT 6.2 FEET SCGE 30.5 FEET
 SIHQ 8.2 FEET CALR 34.2 FEET

PARAMETER	VALUE	UNIT
SMR - Sonic Memory Board	ALLO	
VDLR - Defn not found	2IN	
VDLO - Defn not found	D3	
TOCA - TO Correction Status	DISA	
RATE - Firing Rate	15	HZ
DG - Downhole Gain	/20	
DETE - Detection	E1	
NMSC - Near Minimum Sliding Gate	220	US
CBIG - CBL Gate Width	35	US
AMPI - Sonic Amplitude	2	
CBL - Cement Bond Log Amplitude	UT	
WFM - Waveform Mode	1	
SS - Sweep Speed	MEDI	
TD - TO Delay	DISA	
DTF - Delta-T Fluid	189.000	US/F
DTM - Delta-T Matrix	56.0000	US/F
CDTS - Correction for Delta-T Shale, Empirical	100.000	
SPFS - Sonic Porosity Formula Select	R-H	
WMBH - Weight of Mud	8.50000	LB/G
NCFH - NCF Calibration Jig Type	GSRV	
CSIR - Compressive Strength of Cement	1000.00	PSIA
CWEI - Casing Weight	11.6000	LB/F
DWCO - Digitizer Word Count	512	
DSIN - Digitizer Sample Interval	5	US
DBEI - Digitizer Delay	200	US
BS - Bit Size	8.75000	IN
BHS - Borehole Status (Open or Cased)	CASE	
CS17 - Casing Size	4.50000	IN

COMPANY	Carbon Energy International	SCHL FR	1542 OF
WELL	WNS Menasha #32-1	DRLR TD	564 OF
FIELD	Wildcat	Elev.	83 OF
COUNTY	Coos	STATE	Oregon
		GL	165 OF